

16 SECTION 19 TOWN 07 RANGE

ADAMS COUNTY

COUNTY CORNER NO: 67
ROMPORTOL ID: 41907160000

PUBLIC LAND SURVEY MONUMENT RECORD

TYPE OF MONUMENT: SURVEY NAIL
ADAMS COUNTY COORDINATES, NAD 83 (2007)

N. 271959.192

E. 572701.140

ELEVATION- - - - - DATUM - - - - -

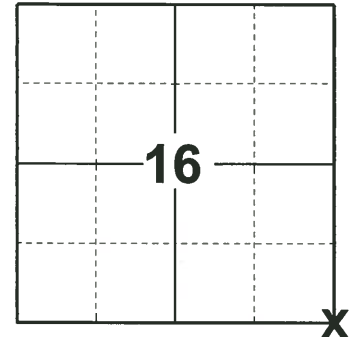
FIELD WORK DATE: 05/13/2019

BASIS FOR MONUMENT LOCATION

1975 - PLS 1103 RAN EDM/TRANSIT TRAVERSE AROUND SECTIONS 1, 2, 3, 10, 11, 12, 13, 14, 15, AND 24 TO DETERMINE SEARCH AREAS FOR INVESTIGATION. COULD FIND NO EVIDENCE OF THE ORIGINAL CORNER OR ANY REMONUMENTATION. RELOCATED CORNER BY RETRACING SURVEY DONE BY DAVID R. CHENEY, S-49, IN THE SOUTHEAST QUARTER OF THE NORTHEAST QUARTER OF SECTION 16.

2000 - PLS 2281 HARRISON MONUMENT RESET AFTER COMPLETION OF COUNTY HIGHWAY C RECONSTRUCTION PROJECT. LOCATION IS BASED ON THE EXISTING MONUMENT FOUND BEFORE CONSTRUCTION BEGAN.

2019 - PLS 2675 FOUND MAG NAIL IN THE ROAD SURFACE, REMOVED, DID NOT FIND ANY ADDITIONAL EVIDENCE OF A MONUMENT BELOW, FOUND 4 TIES. THE MAG NAIL LOCATION AGREES WITH THE EXISTING TIES. ACCEPTED THE MAG NAIL LOCATION AS THE CORNER LOCATION. SET A SURVEY NAIL IN THE MAG NAIL LOCATION AND MEASURED TO THE EXISTING TIES AND A FOUND PROPERTY IRON.



LOCATION

(INDICATE CORNER BY "X")

SEAL:



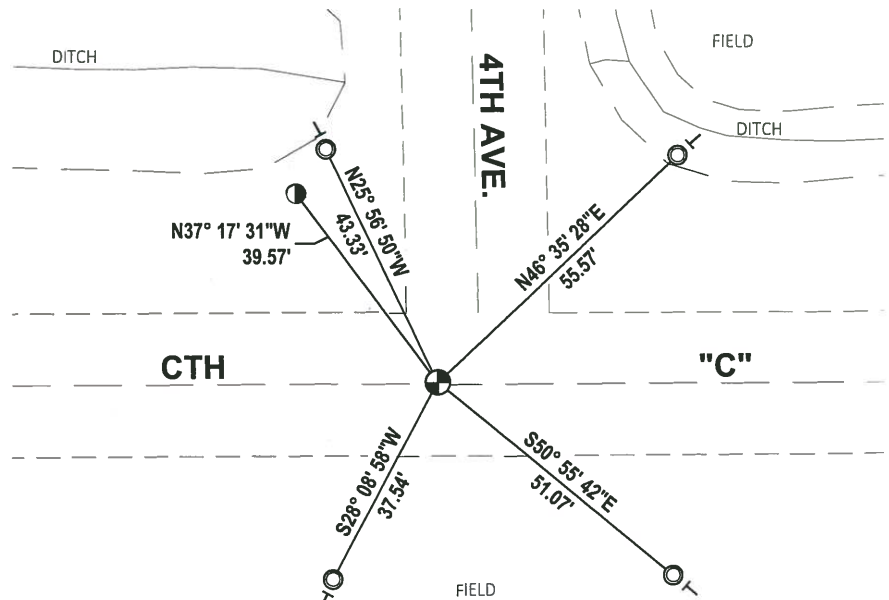
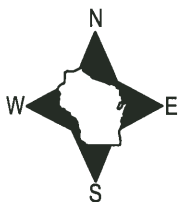
DATA SHOWN HERE ON THIS TIE SHEET IS CORRECT AND COMPLETE TO THE BEST OF MY KNOWLEDGE AND BELIEF.

PROFESSIONAL LAND SURVEYOR

DATE 6/4/19

TIE SKETCH

NOTE: THE CORNER LANDS .5± NORTH OF CTH "C" CENTERLINE AND 7± WEST OF 4TH AVE. CENTERLINE.



- FOUND 5/8" IRON ROD
- FOUND 1-1/4" O.D. IRON PIPE
- ⊕ SET SURVEY NAIL MONUMENT
- ┴ VINYL "T" POST

ADAMS COUNTY

Survey Monument Record

TYPE OF MONUMENT: Standard Harrison

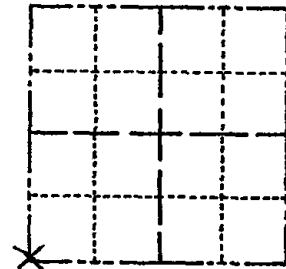
STATE PLANE COORDINATES: N _____
E _____

ELEVATION — M.S.L. DATUM: _____

THETA ANGLE: _____

FIELD BOOK: _____ PAGE _____

CORNER NO. 833
SECTION 15
TOWN 19
RANGE 7



LOCATION
(Indicated by 'X')

SEAL:

BASIS FOR MONUMENT LOCATION

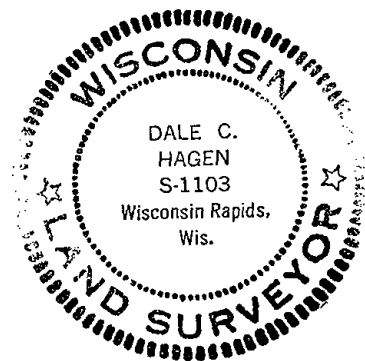
(Use reverse side if necessary)

Show info such as: History of corner, with reference to Vol. and pg, dates, surveyor; exact description of monument replaced; if location computed, by taped or EDM traverse; landowner remarks, etc.

Ran EDM/transit traverse around Sections 1, 2, 3, 10, 11, 12, 13, 14, 15 and 24 to determine search areas for investigation.

Could find no evidence ;of the original corner or' any remonumentation.

Relocated corner by retracing survey done by David R. Cheney, S-49, in the Southeast Quarter of the Northeast Quarter of Section 16.



CORNER O.K. 6-14-77 SK-SS
CORNER OK-NO TIES AVAILABLE 3-18-82 GR-SS
" " " 2-9-87 GR-SS
" " " 1-8-92 KZ-SG
SEE ATTACHED SHEET, GROHOLSKI, 1/11/00

CERTIFIED CORRECT:

Dale C. Hagen
Registered Land Surveyor

DATE: December 2, 1975

TIE SKETCH OK 1-04-02 JG

(Show at least four ties)

NOTE

Ties to nail in disc.

