

14
SECTION

19
TOWN

07
RANGE

ADAMS COUNTY

COUNTY CORNER NO: 71

ROMPORTOL ID: 41907140000

PUBLIC LAND SURVEY MONUMENT RECORD

TYPE OF MONUMENT: HARRISON (BROKEN-TOP)
ADAMS COUNTY COORDINATES, NAD 83 (2007)

N. 271910.044

E. 583343.988

ELEVATION- - - - DATUM - - - -

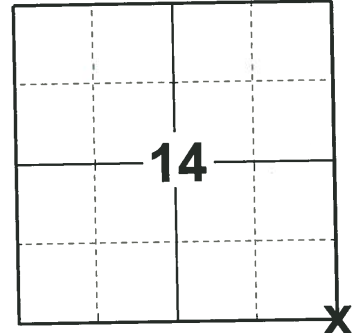
FIELD WORK DATE: 05/07/2019

BASIS FOR MONUMENT LOCATION

1972 - PLS 878 EXCAVATED WITH BACKHOE AND FOUND 10"X10"X24" SANDSTONE. REPLACED STONE WITH HARRISON.

2013 - PLS 1478 FOUND HARRISON AND RE-DREW TIE SHEET.

2019 - PLS 2675 FOUND SURVEY NAIL SHAFT AND 2 MAG NAILS ON OR NEAR THE ROAD SURFACE AND 3 TIES, REMOVED ALL MAG NAILS AND FOUND HARRISON (BROKEN-TOP) 24" BELOW THE ROAD SURFACE. THE MONUMENT AGREES WITH THE EXISTING TIES. ACCEPTED THE HARRISON (BROKEN-TOP) AS THE CORNER LOCATION. SET 1 NEW TIE AND MEASURED TO THE EXISTING TIES.



LOCATION
(INDICATE CORNER BY "X")

SEAL:



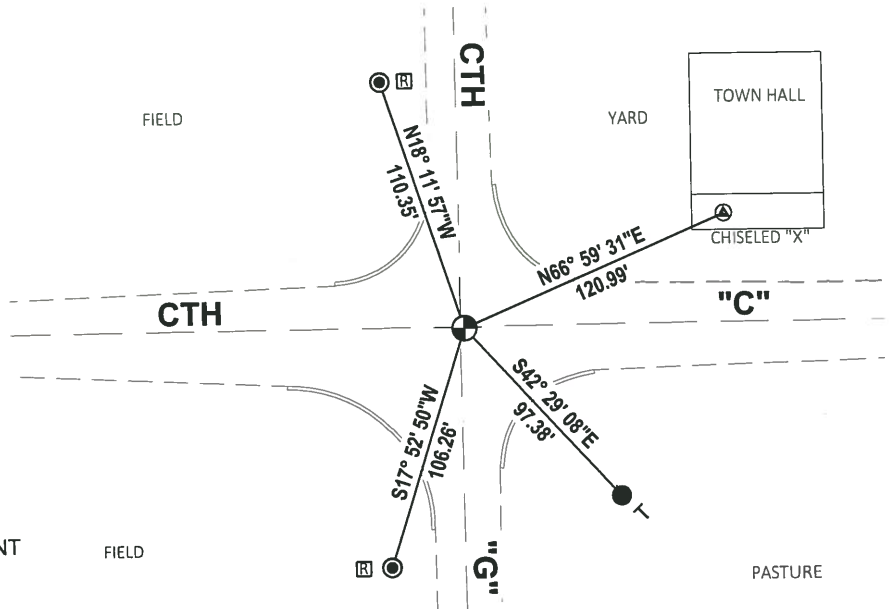
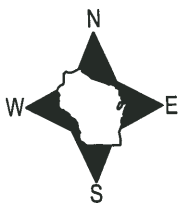
DATA SHOWN HERE ON THIS TIE SHEET IS CORRECT AND COMPLETE TO THE BEST OF MY KNOWLEDGE AND BELIEF.

PROFESSIONAL LAND SURVEYOR

DATE 6/4/19

TIE SKETCH

NOTE: THE CORNER LANDS ON THE CENTERLINE OF CTH "C" AND 1.5± EAST OF CTH "G" CENTERLINE.



- SET 3/4" x 18" IRON REBAR, 1.50#/FT
- FOUND 1-1/4" IRON ROD
- ⊕ FOUND HARRISON (BROKEN-TOP) MONUMENT
- ⊠ RIGHT OF WAY GUARD POST
- └ VINYL "T" POST

ADAMS COUNTY

Survey Monument Record

TYPE OF MONUMENT: 30" HARRISON

STATE PLANE COORDINATES: N _____

E _____

ELEVATION — M.S.L. DATUM: _____

THETA ANGLE: _____

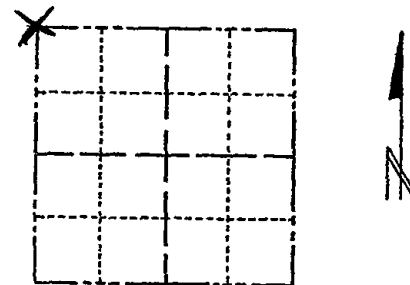
FIELD BOOK: 106? PAGE ?

CORNER NO. 161 (71)

SECTION 24

TOWN 19

RANGE 7



LOCATION
(Indicated by 'X')

SEAL:

BASIS FOR MONUMENT LOCATION

(Use reverse side if necessary)

Show info such as: History of corner, with reference to Vol. and pg, dates, surveyor; exact description of monument replaced; if location computed, by taped or EDM traverse; landowner remarks, etc.

Found stone and set monument

July 25, 1972

Anthony B. Kiedrowski R.L.S. 878

Excavated with backhoe and found 10" x 10" x 24" sandstone.

Replaced stone with Harrison.



CORNER	C.S.	DATE	REF.
"	"	3-17-82	GR-55
"	"	4-6-87	GR-55
"	"	1-8-92	KZ-56
"	"	3-18-97	JG-55
"	"	9-24-07	-JG

CERTIFIED CORRECT:

Anthony B. Kiedrowski
Registered Land Surveyor

DATE: 1-30-73

TIE SKETCH

(Show at least four ties)

