

13  
SECTION

19  
TOWN

07  
RANGE

# ADAMS COUNTY

COUNTY CORNER NO: 72

ROMPORTOL ID: 41907130020

## PUBLIC LAND SURVEY MONUMENT RECORD

TYPE OF MONUMENT: HARRISON (BROKEN-TOP)  
ADAMS COUNTY COORDINATES, NAD 83 (2007)

N. 271930.227

E. 585962.224

ELEVATION- - - - DATUM - - - -

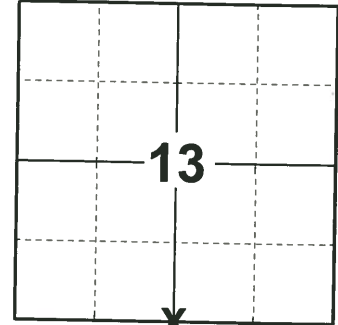
FIELD WORK DATE: 05/07/2019

### BASIS FOR MONUMENT LOCATION

REDRAFTED 2013 - PLS 878 RAN EDM/TRANSIT TRAVERSE AROUND SECTION 1, 2, 3, 10, 11, 12, 13, 15, AND 24 TO DETERMINE SEARCH ARES FOR INVESTIGATION. EXCAVATED WITH BACKHOE, YIELDED NO EVIDENCE OF THE ORIGINAL CORNER OR ANY REMONUMENTATION. SET CORNER EQUIDISTANT AND ON LINE BETWEEN ADJACENT SECTION CORNERS.

2013 - PLS 1478 FOUND MAG NAIL AND RE-DREW TIE SHEET.

2019 - PLS 2675 FOUND MAG NAIL 2" BELOW THE ROAD SURFACE, REMOVED AND FOUND HARRISON (BROKEN-TOP) 8" BELOW AND 4 TIES. THE MONUMENT AGREES WITH THE EXISTING TIES. ACCEPTED THE HARRISON (BROKEN-TOP) AS THE CORNER LOCATION AND MEASURED TO THE EXISTING TIES.



**LOCATION**

(INDICATE CORNER BY "X")

SEAL:



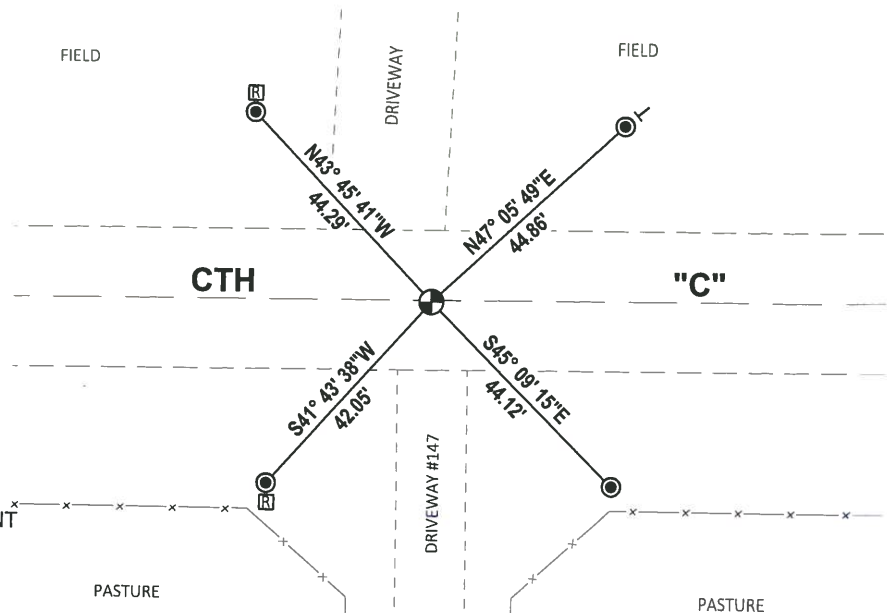
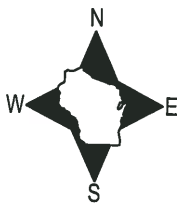
DATA SHOWN HERE ON THIS TIE SHEET IS CORRECT AND COMPLETE TO THE BEST OF MY KNOWLEDGE AND BELIEF.

PROFESSIONAL LAND SURVEYOR

DATE 6/4/19

### - TIE SKETCH

NOTE: THE CORNER LANDS .5± SOUTH OF CTH "C" CENTERLINE.



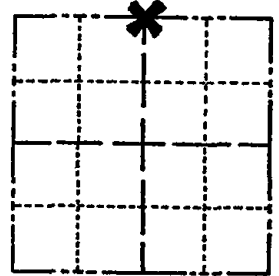
- FOUND 1-1/4" IRON ROD
- ⊕ FOUND HARRISON (BROKEN-TOP) MONUMENT
- ⊥ VINYL "T" POST
- ⊠ RIGHT OF WAY GUARD POST

# ADAMS COUNTY

## Survey Monument Record

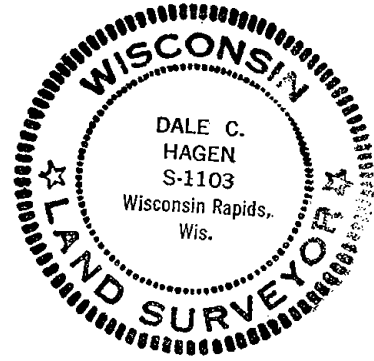
CORNER NO. 911  
SECTION 24  
TOWN 19  
RANGE 7

TYPE OF MONUMENT: \_\_\_\_\_  
STATE PLANE COORDINATES: N \_\_\_\_\_  
E \_\_\_\_\_  
ELEVATION — M.S.L. DATUM: \_\_\_\_\_  
THETA ANGLE: \_\_\_\_\_  
FIELD BOOK: \_\_\_\_\_ PAGE \_\_\_\_\_



LOCATION  
(Indicated by 'X')

SEAL:



### BASIS FOR MONUMENT LOCATION

(Use reverse side if necessary)

Show info such as: History of corner, with reference to Vol. and pg. dates, surveyor; exact description of monument replaced; if location computed, by taped or EDM traverse; landowner remarks, etc.

Ran EDM/ transit traverse around Sections 1, 2, 3, 10, 11, 12, 13, 14, 15 and 24 to determine search areas for investigation.

Excavation with backhoe by A.B.Kiedrowski, County Surveyor, yielded no evidence of the original corner or any remonumentation.

Set corner equidistant and on line between adjacent section corners.

CORNER O.K. 4-4-77 JG SS  
" " 3-18-82 GR-SS  
TOP BROKEN 3 NEW TIES 4-6-87 GR-SS  
" " 1-8-92 KZ-JG  
" " 3-18-97 JG-SS

CERTIFIED CORRECT:

*Dale C. Hagen*  
Registered Land Surveyor

DATE: December 2, 1975

### TIE SKETCH

CORNER OK 1-31-02 JG  
OK, 9-21-02-JG

(Show at least four ties)

#### NOTE:

Ties in trees to nail in disc.

