

**ADAMS COUNTY**

**Survey Monument Record**

TYPE OF MONUMENT: Standard Harrison

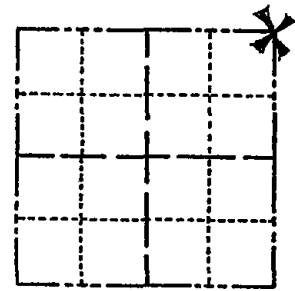
STATE PLANE COORDINATES: N \_\_\_\_\_  
E \_\_\_\_\_

ELEVATION — M.S.L. DATUM: \_\_\_\_\_

THETA ANGLE: \_\_\_\_\_

FIELD BOOK: 101 PAGE 12

CORNER NO. 817 <sup>(73)</sup>  
SECTION 24  
TOWN 19 N  
RANGE 7 E



LOCATION  
(Indicated by 'X')

SEAL:



**BASIS FOR MONUMENT LOCATION**

(Use reverse side if necessary)

Show info such as: History of corner, with reference to Vol. and pg. dates, surveyor; exact description of monument replaced; if location computed, by taped or EDM traverse; landowner remarks, etc.

Excavated with backhoe. Found 12"x12"x18" soft red sandstone. Lowered stone, set it on its side because of fracturing, and set Harrison on top. Stain from old post found underneath stone.

CORNER	O.K.	4-4-77	RN-55
"	"	3-18-82	GR-55
"	"	3-18-87	SS
"	"	1-8-92	KZ-56
"	"	3-18-97	JG-55

CERTIFIED CORRECT:

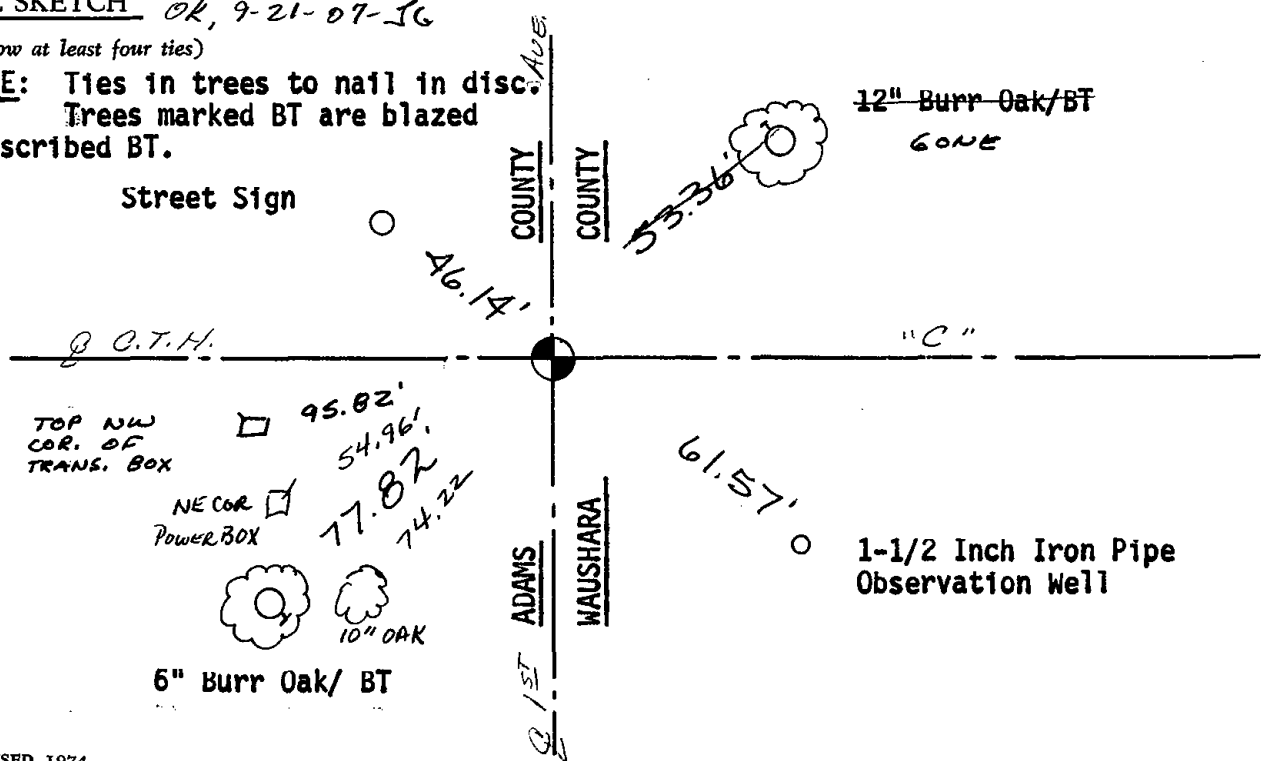
*Dale C. Hagen*  
Registered Land Surveyor

DATE: \_\_\_\_\_

**TIE SKETCH** CORNER OK 1-31-02 JG  
OK, 9-21-07-JG

(Show at least four ties)

NOTE: Ties in trees to nail in disc.  
Trees marked BT are blazed and scribed BT.



WAUSHARA COUNTY  
CERTIFIED LAND CORNER

No. 73

Witnesses to corner location:

DAN ELLINGER

SCOTT SCHINDLER

Description of corner evidence found:

HARRISON MONUMENT AND 2 TIES  
AS PER HASEN JIE SHEET 14 THE  
ADAMS COUNTY RECORDS

STATE OF WISCONSIN )  
WAUSHARA COUNTY )

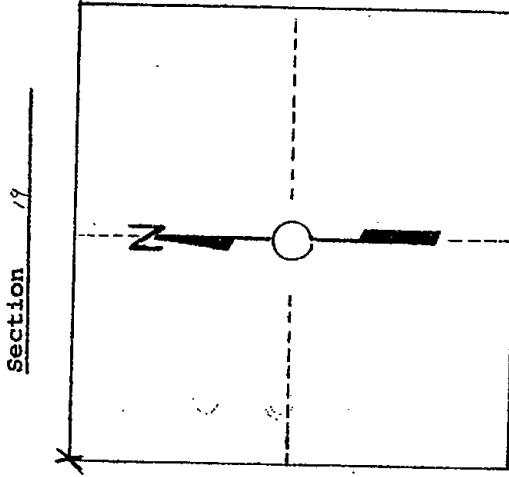
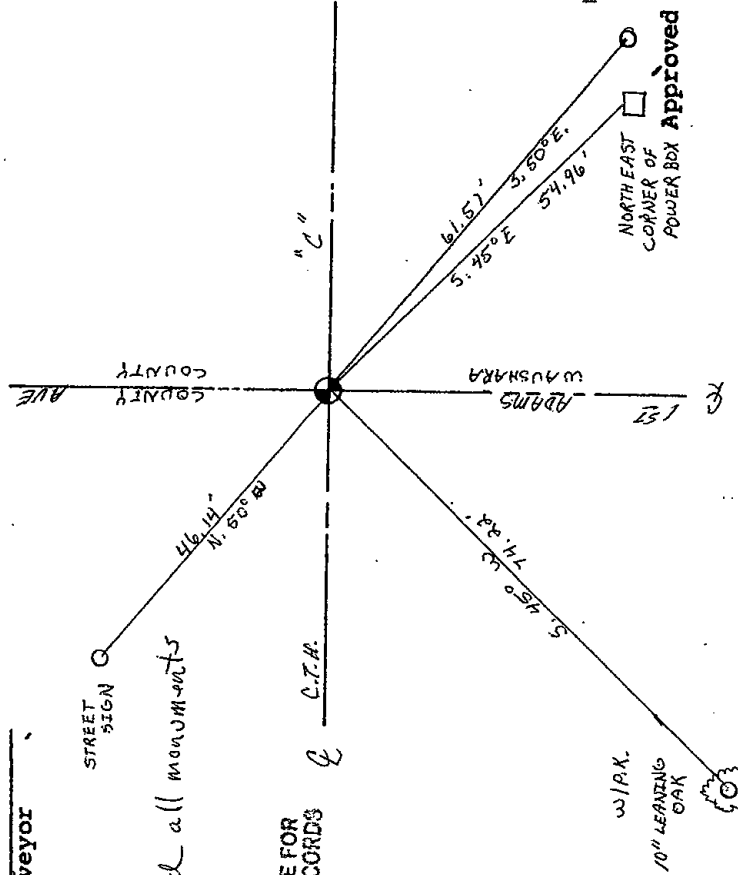
I, Gary E. Schindler, do hereby certify that on the 2nd day of Sept, 1988, I found (evidence) (no evidence) of the SW corner of Section 19, T. 19 N, R. 8 E, Fourth Principal Meridian, and I re-established said corner according to the Wisconsin Statutes as shown and described hereon.

Dated this 3rd day of Oct, 1988

G. E. Schindler  
Waushara County Surveyor

Procedure:  
Retired and marked all monuments

SEE BACK OF PAGE FOR  
MAINTENANCE RECORDS



Section 19

T. 19 N R. 8 E  
WISCONSIN

1/2 RDN PIPE  
OBSERVATION  
WELL

NORTHEAST  
CORNER OF  
POWER BOX

W/P.K.  
10\"/>

Approved By: \_\_\_\_\_