

20  
SECTION

19  
TOWN

07  
RANGE

# ADAMS COUNTY

COUNTY CORNER NO.: 76

ROMPORTOL ID: 41907202000

## PUBLIC LAND SURVEY MONUMENT RECORD

TYPE OF MONUMENT: HARRISON  
ADAMS COUNTY COORDINATES, NAD 83 (2007)

N. 269241.944

E. 567497.054

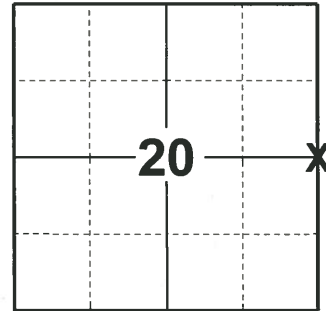
ELEVATION: - - - - DATUM - - - -

FIELD WORK DATE: 04/15/2019

### BASIS FOR MONUMENT LOCATION

1983 - PLS 1551 DUG IN CORNER AREA AND AT RECORD DISTANCE FROM NORTH, NO TRACE OF STAKE OR BEARING TREES WAS FOUND. SET CORNER PROPORTIONALLY ON A STRAIGHT LINE BETWEEN ADJACENT SECTION CORNERS. CORNER LOCATION FALLS NEAR THE CENTERLINE OF AN OLD N-S ROAD BED.

2019 - PLS 2675 FOUND HARRISON 10" BELOW THE OLD ROAD BED AND 3 WITNESSES. THE MONUMENT AGREES WITH ALL WITNESSES. ACCEPTED THE HARRISON AS THE CORNER LOCATION. SET 4 NEW TIES AND MEASURED TO EXISTING WITNESSES.



LOCATION  
(INDICATE CORNER BY "X")

SEAL:

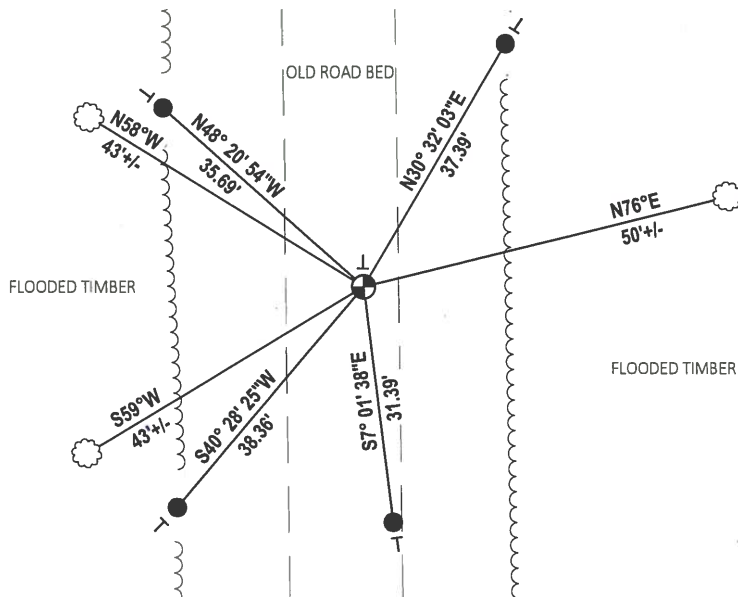
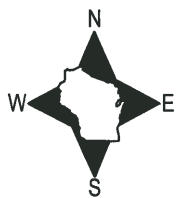


DATA SHOWN HERE ON THIS TIE SHEET IS CORRECT AND COMPLETE TO THE BEST OF MY KNOWLEDGE AND BELIEF.

PROFESSIONAL LAND SURVEYOR

DATE 5/1/19

### TIE SKETCH



- SET 3/4" x 18" IRON REBAR, 1.50#/FT
- ⊕ FOUND HARRISON MONUMENT
- ┆ VINYL "T" POST
- ☁ WITNESS TREE

# U.S. PUBLIC LAND SURVEY MONUMENT RECORD

## ADAMS COUNTY

TYPE OF MONUMENT: Standard Harrison

STATE PLANE COORDINATES: N \_\_\_\_\_  
E \_\_\_\_\_

ELEVATION — M.S.L. DATUM: \_\_\_\_\_

THETA ANGLE: \_\_\_\_\_

FIELD BOOK: Adams County PAGE 65

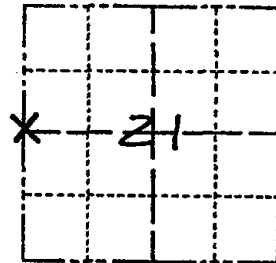
DRAWN BY: D. Riesop

CORNER NO. 76

SECTION 21

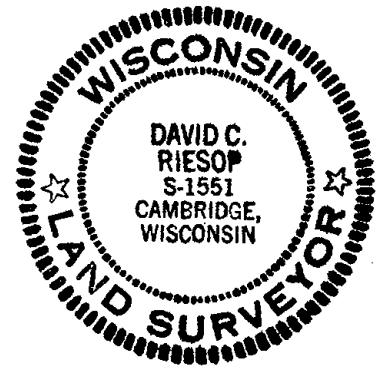
TOWN 19N

RANGE 7E



LOCATION  
(Indicated by 'X')

SEAL:



DATA SHOWN HERE ON  
CERTIFIED CORRECT:

David C. Riesop  
Registered Land Surveyor

DATE: 8/25/83

### BASIS FOR MONUMENT LOCATION

Show info such as: History of corner, with reference to Vol. and pg., dates, surveyor; exact description of monument replaced; if location computed, by taped or EDM traverse; landowner remarks, etc. (Use reverse side if necessary) (in conformance with Section A-E 502 of the Wisconsin Administrative Code)

Dug in corner area and at record distance from North, no trace of stake or bearing trees was found.

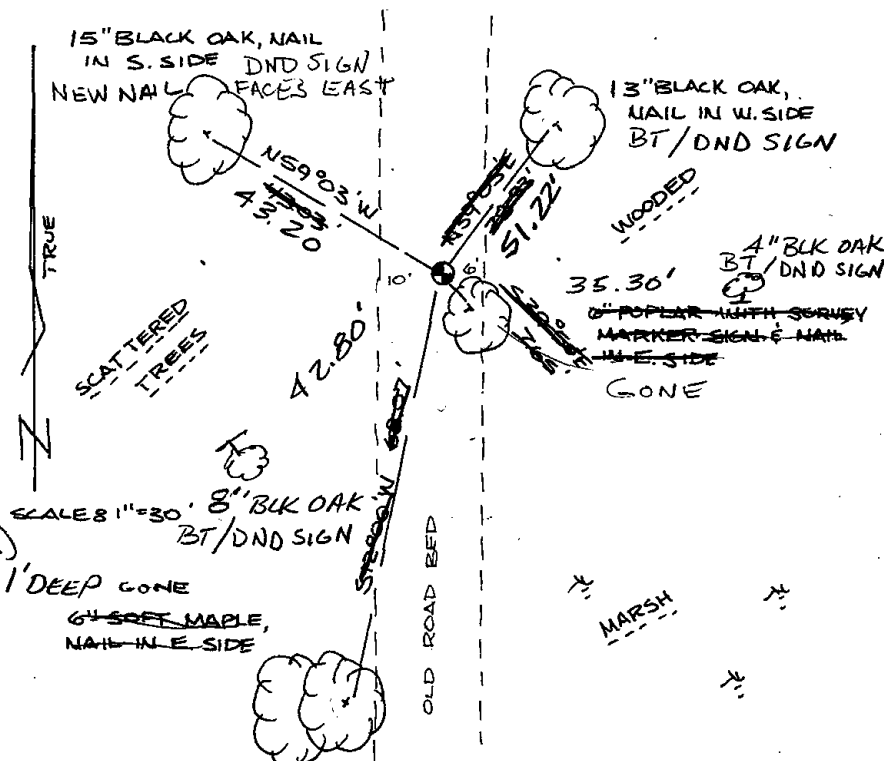
Set corner proportionally on a straight line between adjacent section corners.

Corner location falls near the centerline of an old N-S road bed.

filed for record this 28th  
day of Sept 1983  
per 59.60 Wisconsin Statutes.  
D. Riesop  
ADAMS COUNTY SURVEYOR

### TIE SKETCH

Show at least four ties, also fence lines, roads, topo, size and type of witness trees and if off road - best way to arrive at corner.



### MAINTENANCE RECORD

| Date    | Init. | Remarks                         |
|---------|-------|---------------------------------|
| 7-13-92 | JG-B5 | 1-GONE                          |
| 2-23-02 | JG    | 1-GONE, 2-LEFT (HIGH WATER)     |
| 11-7-07 | JG    | 4-NEW TIES, MON OK, 1'DEEP GONE |
|         |       |                                 |
|         |       |                                 |