

21  
SECTION

19  
TOWN

07  
RANGE

# ADAMS COUNTY

COUNTY CORNER NO: 77

ROMPORTOL ID: 41907212000

## PUBLIC LAND SURVEY MONUMENT RECORD

TYPE OF MONUMENT: HARRISON

ADAMS COUNTY COORDINATES, NAD 83 (2007)

N. 269291.245

E. 572720.923

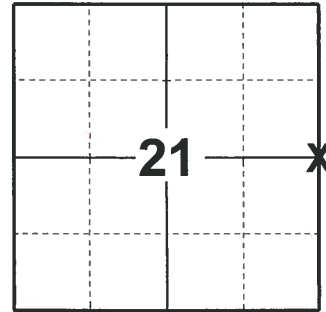
ELEVATION-        DATUM       

FIELD WORK DATE: 04/16/2019

### BASIS FOR MONUMENT LOCATION

1983 - PLS 1551 CORNER WAS RESET FROM TIE TO HUMMOCK OF ORIGINAL SOUTHEAST BEARING TREE, THE CHARRED REMAINS OF WHICH WERE IDENTIFIED AS WHITE PINE BY THE U.S. FOREST LAB. NO OTHER PINE STUMPS ARE EVIDENT IN THE AREA, AND THERE IS NO OCCUPATION. CORNER AREA WAS EXCAVATED, BUT NO STAKE WAS FOUND.

2019 - PLS 2675 FOUND HARRISON FLUSH WITH THE GROUND AND 3 WITNESS TREES. THE MONUMENT AGREES WITH ALL WITNESSES. ACCEPTED THE HARRISON AS THE CORNER LOCATION. SET 4 NEW TIES AND MEASURED TO THE EXISTING WITNESS TREES.



LOCATION  
(INDICATE CORNER BY "X")

SEAL:



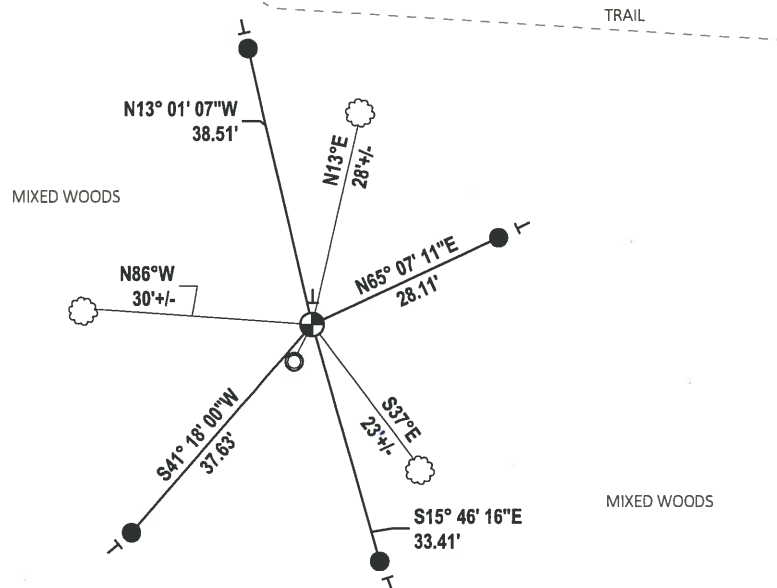
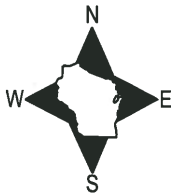
DATA SHOWN HERE ON THIS TIE SHEET IS CORRECT AND COMPLETE TO THE BEST OF MY KNOWLEDGE AND BELIEF.

PROFESSIONAL LAND SURVEYOR

DATE 5/1/19

### TIE SKETCH

NOTE: A 1-1/4 O.D. IRON PIPE FALLS S27°W, ±4.35' AWAY FROM THE CORNER.



- SET 3/4" x 18" IRON REBAR, 1.50#/FT
- ⊕ FOUND HARRISON MONUMENT
- ┊ VINYL "T" POST
- ☉ WITNESS TREE

# U.S. PUBLIC LAND SURVEY MONUMENT RECORD

## ADAMS COUNTY

TYPE OF MONUMENT: Standard Harrison

STATE PLANE COORDINATES: N \_\_\_\_\_  
E \_\_\_\_\_

ELEVATION — M.S.L. DATUM: \_\_\_\_\_

THETA ANGLE: \_\_\_\_\_

FIELD BOOK: Adams County PAGE 57

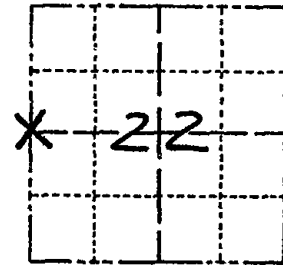
DRAWN BY: D. Riesop

CORNER NO. 77

SECTION 22

TOWN 19N

RANGE 7E



LOCATION  
(Indicated by 'X')

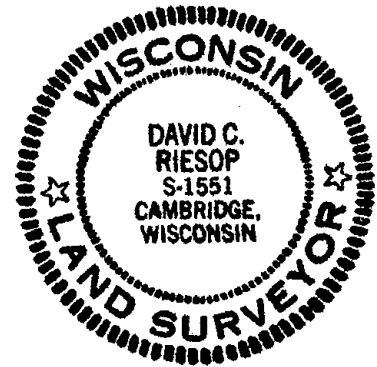
### BASIS FOR MONUMENT LOCATION

Show info such as: History of corner, with reference to Vol. and pg., dates, surveyor; exact description of monument replaced; if location computed, by taped or EDM traverse; landowner remarks, etc. (Use reverse side if necessary) (in conformance with Section A-E 502 of the Wisconsin Administrative Code)

Corner was reset from tie to hummock of original Southeast bearing tree, the charred remains of which were identified as White Pine by the U.S. Forest Lab. No other Pine stumps are evident in the area, and there is no occupation.

Corner area was excavated, but no stake was found.

SEAL:



DATA SHOWN HERE ON  
CERTIFIED CORRECT:

*David C. Riesop*  
Registered Land Surveyor

DATE: 7/28/03

### TIE SKETCH

Show at least four ties, also fence lines, roads, topo, size and type of witness trees and if off road - best way to arrive at corner.

filed for record this 17<sup>th</sup> day of August 1903 per 59.60, Wisconsin Statutes.  
*D. Phraschait*  
ADAMS COUNTY SURVEYOR

### MAINTENANCE RECORD

Date	Init.	Remarks
6-12-02	SS	ALL OK
2-25-02	SS	3 NEW TIES

