

22  
SECTION

19  
TOWN

07  
RANGE

# ADAMS COUNTY

COUNTY CORNER NO: 78

ROMPORTOL ID: 41907222000

## PUBLIC LAND SURVEY MONUMENT RECORD

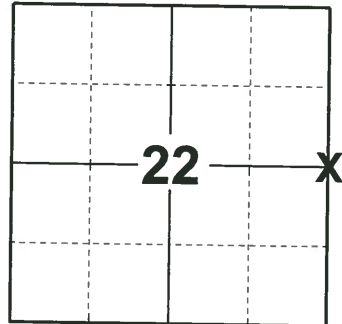
TYPE OF MONUMENT: HARRISON  
ADAMS COUNTY COORDINATES, NAD 83 (2007)

N. 269248.285

E. 577977.191

ELEVATION- - - - - DATUM - - - - -

FIELD WORK DATE: 05/21/2019



LOCATION

(INDICATE CORNER BY "X")

### BASIS FOR MONUMENT LOCATION

1983 - PLS 1551 DID NOT DIG FOR CORNER BECAUSE COMPUTED LOCATION FALLS IN THE CENTER OF THE SOUTH DITCH FOR BLACKHAWK DRIVE. ORIGINAL BEARING TREES WOULD ALSO HAVE BEEN IN ROADWAY. NO OCCUPATION LINES ARE EVIDENT. CORNER WAS RESET PROPORTIONALLY ON A STRAIGHT LINE BETWEEN ADJACENT SECTION CORNERS. THIS LOCATION AGREES WITH THE ORIGINAL TOPO CALL PLACING THE CORNER ONE CHAIN SOUTH OF HIGH GROUND, AND IS WITHIN 2.2 FEET OF THE ORIGINAL DISTANCE. IT IS ALSO IN AGREEMENT WITH COMMENT BY TOWNSHIP ROAD WORKER THAT THE CORNER SHOULD LIE NEAR THE SOUTH EDGE OF THE ROAD.

2019 - PLS 2675 FOUND HARRISON 4" BELOW THE DITCH BOTTOM AND 3 WITNESS TREES. THE MONUMENT AGREES WITH ALL 3 WITNESS TREES. ACCEPTED THE HARRISON AS THE CORNER LOCATION. SET 4 NEW TIES AND MEASURED TO THE WITNESS TREES.

SEAL:



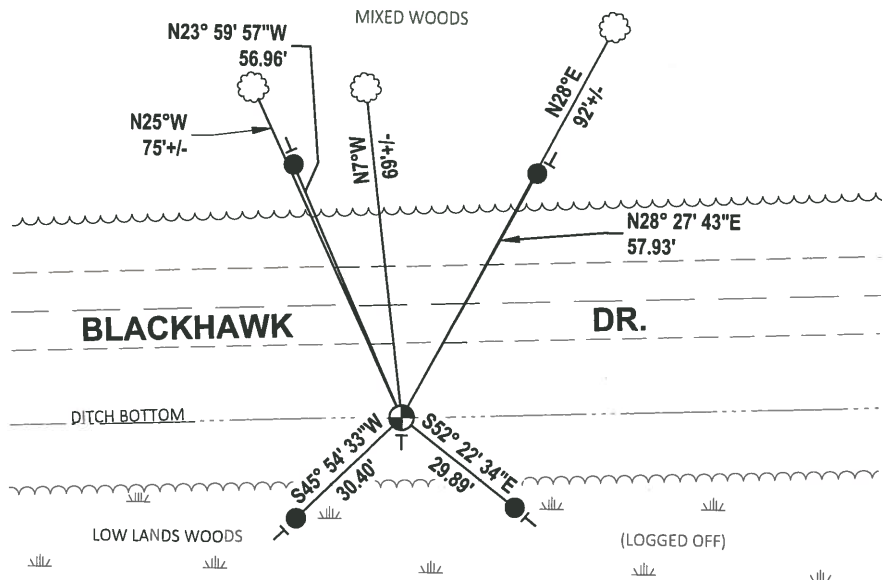
DATA SHOWN HERE ON THIS TIE SHEET IS CORRECT AND COMPLETE TO THE BEST OF MY KNOWLEDGE AND BELIEF.

PROFESSIONAL LAND SURVEYOR

DATE 6/4/19

### TIE SKETCH

NOTE: THE CORNER LANDS 23'± SOUTH OF BLACKHAWK DR. CENTERLINE.



- SET 3/4" x 18" IRON REBAR, 1.50#/FT
- ⊕ FOUND HARRISON MONUMENT
- ┆ VINYL "T" POST
- ☉ WITNESS TREE

# U.S. PUBLIC LAND SURVEY MONUMENT RECORD

## ADAMS COUNTY

TYPE OF MONUMENT: Standard Harrison

STATE PLANE COORDINATES: N \_\_\_\_\_  
E \_\_\_\_\_

ELEVATION — M.S.L. DATUM: \_\_\_\_\_

THETA ANGLE: \_\_\_\_\_

FIELD BOOK: Adams County PAGE 58

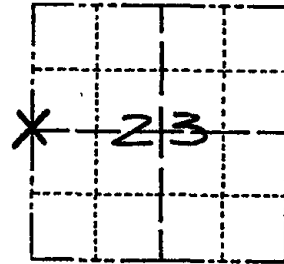
DRAWN BY: D. Riesop

CORNER NO. 78

SECTION 23

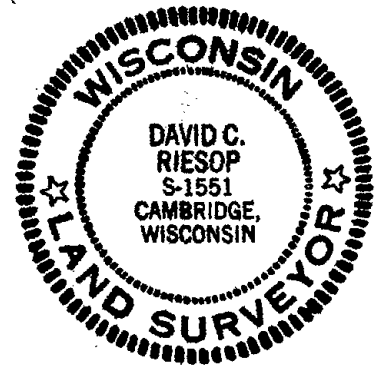
TOWN 19N

RANGE 7E



LOCATION  
(Indicated by 'X')

SEAL:



DATA SHOWN HERE ON  
CERTIFIED CORRECT:

*David C. Riesop*  
Registered Land Surveyor

DATE: 7/28/83

### BASIS FOR MONUMENT LOCATION

Show info such as: History of corner, with reference to Vol. and pg., dates, surveyor; exact description of monument replaced; if location computed, by taped or EDM traverse; landowner remarks, etc. (Use reverse side if necessary) (in conformance with Section A-E 502 of the Wisconsin Administrative Code)

Did not dig for corner because computed location falls in the center of the south road ditch for Blackhawk Drive. Original bearing trees would also have been in roadway. No occupation lines are evident.

Corner was reset proportionally on a straight line between adjacent section corners.

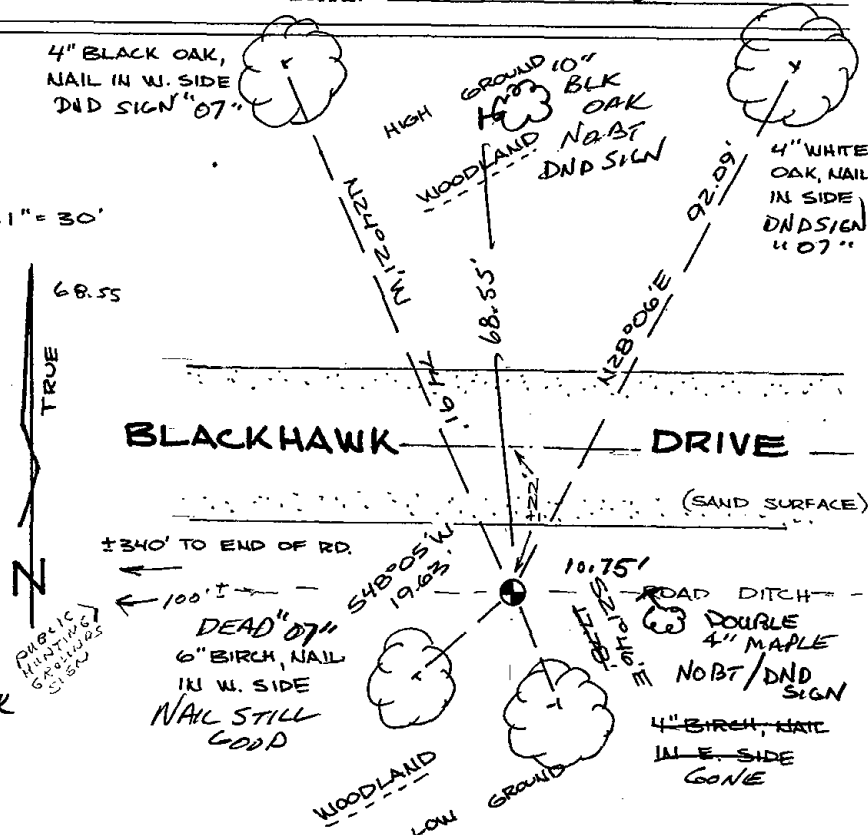
This location agrees with the original topo call placing the corner one chain South of high ground, and is within 2.2 feet of the original distance. It is also in agreement with comment by Township road worker that the corner should lie near the South edge of the road.

### TIE SKETCH

Show at least four ties, also fence lines, roads, topo, size and type of witness trees and if off road - best way to arrive at corner.

4" BLACK OAK,  
NAIL IN W. SIDE  
DND SIGN "07"

SCALE 81" = 30'



filed for record this... 17th  
day of August 1983  
per 59.09 Wisconsin Statutes.  
*D. Riesop*  
ADAMS COUNTY SURVEYOR

### MAINTENANCE RECORD

Date	Init.	Remarks
3-31-87	SS	OK
1-8-92	KZ-ILG	OK
5-21-02	JG-SS	OK
9-24-07	JG	1-GONE, 2-NEW, MON. OK