

23  
SECTION

19  
TOWN

07  
RANGE

# ADAMS COUNTY

COUNTY CORNER NO: 79

ROMPORTOL ID: 41907232000

## PUBLIC LAND SURVEY MONUMENT RECORD

TYPE OF MONUMENT: HARRISON  
ADAMS COUNTY COORDINATES, NAD 83 (2007)

N. 269277.012

E. 583345.183

ELEVATION- \_\_\_\_\_ DATUM \_\_\_\_\_

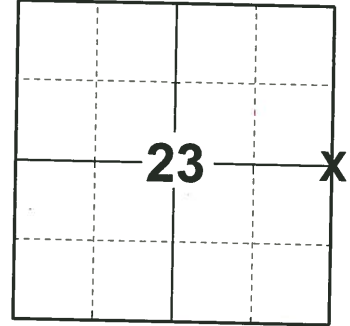
FIELD WORK DATE: 05/20/2019

### BASIS FOR MONUMENT LOCATION

1972 - PLS 878 SET ON A STRAIGHT LINE EQUIDISTANT BETWEEN ADJACENT SECTION CORNERS.

1975 - PLS FOUND HARRISON AND RE-DREW TIE SHEET.

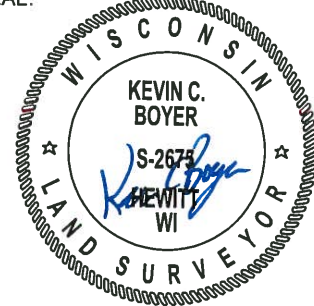
2019 - PLS 2675 FOUND HARRISON MONUMENT 18" BELOW THE ROAD SURFACE AND DID NOT FIND ANY TIES OR WITNESSES. ACCEPTED THE HARRISON MONUMENT AS THE CORNER LOCATION. SET 3 NEW TIES AND MEASURED TO SET TIES AND FOUND PROPERTY IRON.



### LOCATION

(INDICATE CORNER BY "X")

SEAL:



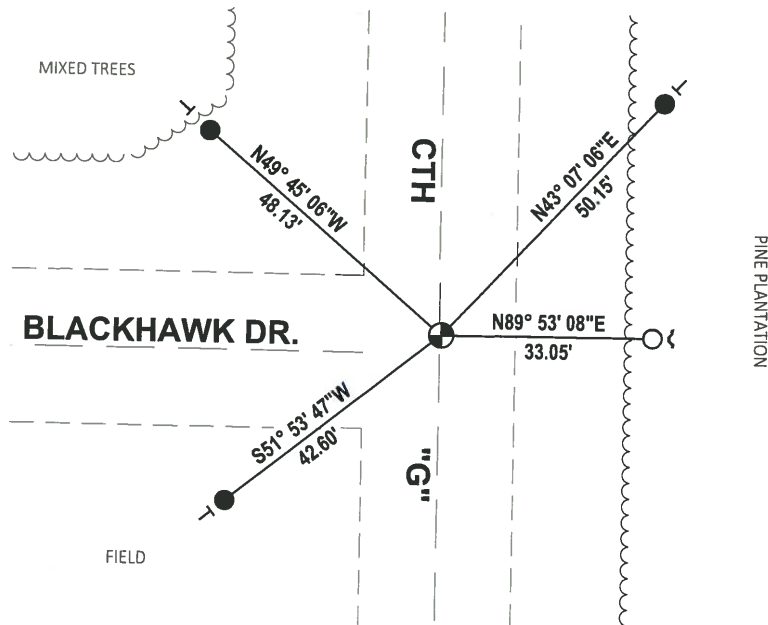
DATA SHOWN HERE ON THIS TIE SHEET IS CORRECT AND COMPLETE TO THE BEST OF MY KNOWLEDGE AND BELIEF.

PROFESSIONAL LAND SURVEYOR

DATE 6/4/19

### - TIE SKETCH

NOTE: THE CORNER LANDS 1± EAST OF CTH "G" CENTERLINE AND 2.5± NORTH OF BLACKHAWK DR. CENTERLINE.



- SET 3/4" x 18" IRON REBAR, 1.50#/FT
- FOUND 3/4" IRON ROD
- ⊙ FOUND HARRISON MONUMENT
- ~ STEEL FENCE POST
- VINYL "T" POST

ADAMS COUNTY

Survey Monument Record

TYPE OF MONUMENT: Standard Harrison

STATE PLANE COORDINATES: N \_\_\_\_\_

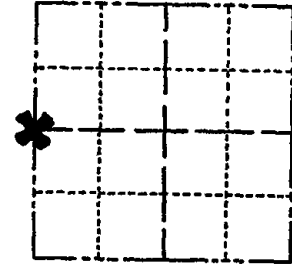
E \_\_\_\_\_

ELEVATION — M.S.L. DATUM: \_\_\_\_\_

THETA ANGLE: \_\_\_\_\_

FIELD BOOK: \_\_\_\_\_ PAGE \_\_\_\_\_

CORNER NO. 169  
SECTION 24  
TOWN 19  
RANGE 7



LOCATION  
(Indicated by 'X')

SEAL:



BASIS FOR MONUMENT LOCATION

(Use reverse side if necessary)

Show info such as: History of corner, with reference to Vol. and pg, dates, surveyor; exact description of monument replaced; if location computed, by taped or EDM traverse; landowner remarks, etc.

Set on a straight line equidistant between adjacent section corners.

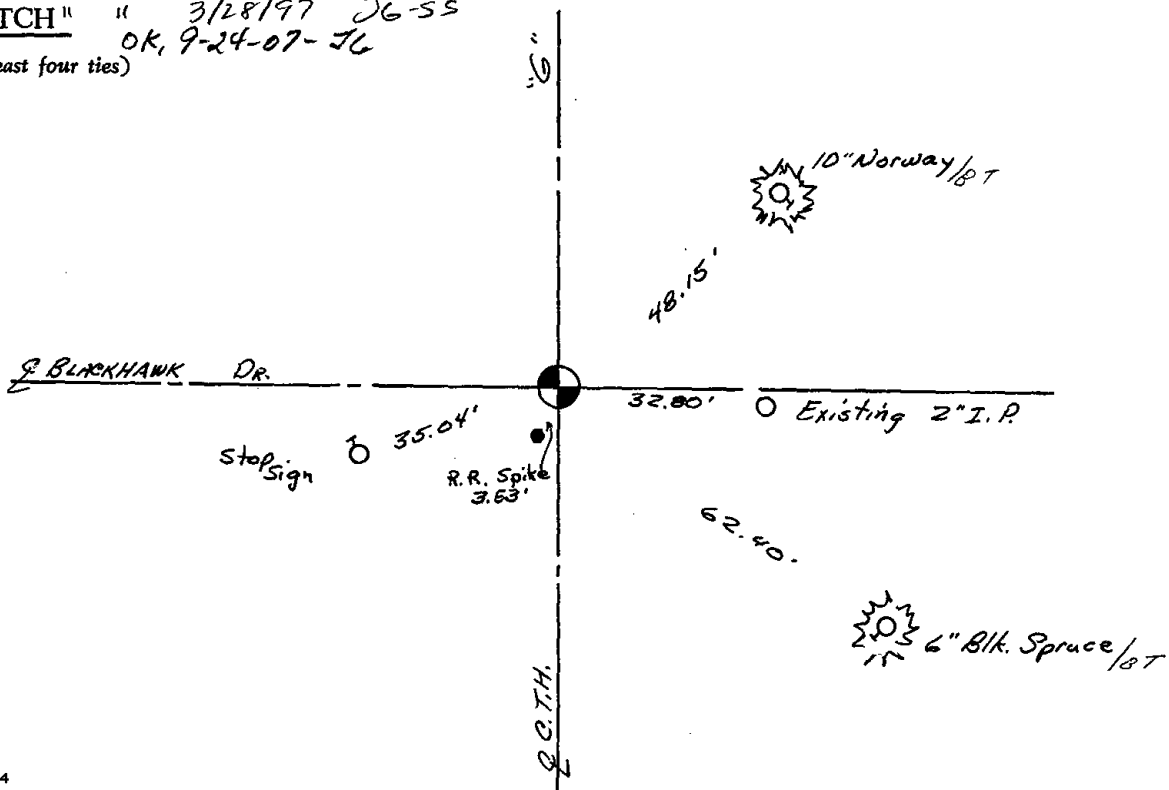
CORNER	O.K.	4-4-77	PN-SS
"	"	3-17-82	GR-SS
"	"	4-6-87	GR-SS
"	"	1-8-92	KZ-JG

CERTIFIED CORRECT:

*Anthony B. Kiedrowski*  
Registered Land Surveyor

DATE: 12/3/75 (Revised)

TIE SKETCH " " 3/28/97 JG-SS  
OK, 9-24-07-JL  
(Show at least four ties)

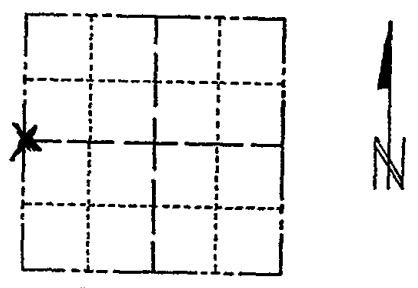


# ADAMS COUNTY

## Survey Monument Record

TYPE OF MONUMENT: 30" HARBISON  
 STATE PLANE COORDINATES: N \_\_\_\_\_  
 E \_\_\_\_\_  
 ELEVATION — M.S.L. DATUM: \_\_\_\_\_  
 THETA ANGLE: \_\_\_\_\_  
 FIELD BOOK: 106? PAGE ?

CORNER NO. 169  
 SECTION 24  
 TOWN 19  
 RANGE 7



LOCATION  
(Indicated by 'X')

SEAL:

### BASIS FOR MONUMENT LOCATION

(Use reverse side if necessary)

Show info such as: History of corner, with reference to Vol. and pg, dates, surveyor; exact description of monument replaced; if location computed, by taped or EDM traverse; landowner remarks, etc.

Set monumen t  
 August 8, 1972  
 Anthony B. Kiedrowski R.L.S. 878



Set on a straight line equidistant between section corners.

CERTIFIED CORRECT:

*Anthony B. Kiedrowski*  
 Registered Land Surveyor

DATE: \_\_\_\_\_

### TIE SKETCH

(Show at least four ties)

