

## PUBLIC LAND SURVEY MONUMENT RECORD

TYPE OF MONUMENT: HARRISON  
 ADAMS COUNTY COORDINATES, NAD 83 (2007)

N. 266556.333

E. 559525.936

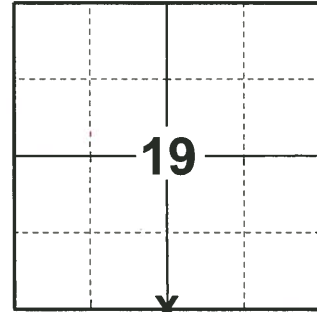
ELEVATION- \_\_\_\_\_ DATUM \_\_\_\_\_

FIELD WORK DATE: 03/21/2019

### BASIS FOR MONUMENT LOCATION

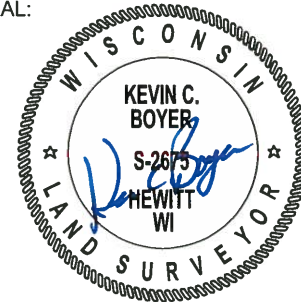
1977 - PLS 1103 RAN EDM/T2 TRAVERSE AROUND SECTION 30 AND MANY ADJACENT SECTIONS TO DETERMINE SEARCH AREA FOR INVESTIGATION. COULD FIND NO EVIDENCE OF THE ORIGINAL CORNER, REMONUMENTATION OF THE CORNER OR ANY BEARING TREES. RELOCATED CORNER BY SINGLE PROPORTIONATE (ON LINE) MEASURE BETWEEN ADJACENT SECTION CORNERS. SET HARRISON MONUMENT ON 9-1-1977.

2019 - PLS 2675 FOUND HARRISON FLUSH WITH THE GROUND SURFACE AND 2 WITNESSES. THE MONUMENT AGREES WITH BOTH WITNESSES. ACCEPTED THE HARRISON AS THE CORNER LOCATION. SET 4 NEW TIES AND MEASURED TO THE EXISTING WITNESSES.



**LOCATION**  
 (INDICATE CORNER BY "X")

SEAL:



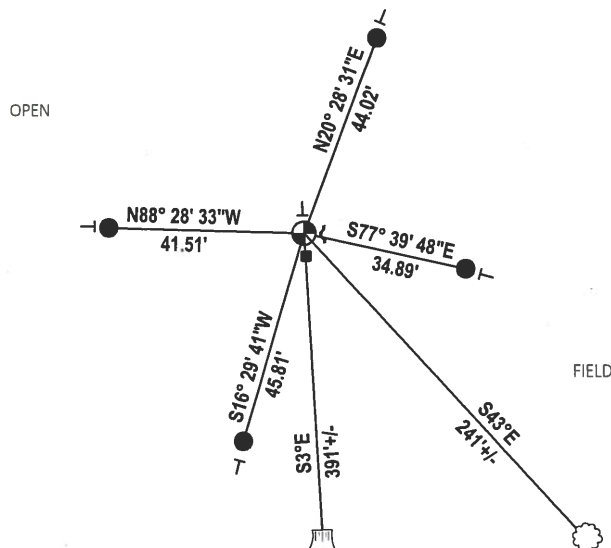
DATA SHOWN HERE ON THIS TIE SHEET IS CORRECT AND COMPLETE TO THE BEST OF MY KNOWLEDGE AND BELIEF.

PROFESSIONAL LAND SURVEYOR

DATE 5/1/19

### TIE SKETCH

NOTE: 6" PLASTIC POST 6' TALL JUST SOUTH OF THE CORNER LOCATION.

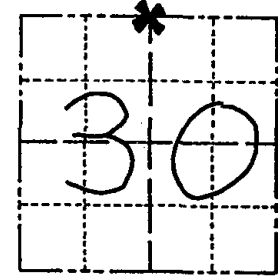


- SET 3/4" x 18" IRON REBAR, 1.50#/FT
- ⊕ FOUND HARRISON MONUMENT
- ▣ WITNESS STUMP
- ┌ STEEL FENCE POST
- └ VINYL "T" POST
- ☼ WITNESS TREE

# Government Land Corner Certificate

ADAMS County  
 TYPE OF MONUMENT: Standard Harrison  
 STATE PLANE COORDINATES: N \_\_\_\_\_  
 E \_\_\_\_\_  
 ELEVATION — M.S.L. DATUM: \_\_\_\_\_  
 THETA ANGLE: \_\_\_\_\_  
 FIELD BOOK: 54 PAGE 26  
 DRAWN BY: SCOTT SORENSEN

CORNER NO. 82  
 SECTION 30  
 TOWN 19  
 RANGE 7



LOCATION  
 (Indicated by 'X')

## BASIS FOR MONUMENT LOCATION

Show info such as: History of corner, with reference to Vol. and pg., dates, surveyor; exact description of monument replaced; if location computed, by taped or EDM traverse; landowner remarks, etc. (Use reverse side if necessary)

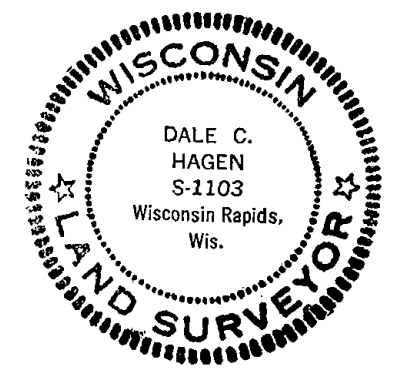
Ran EDM/T2 traverse around Section 30 and many adjacent sections to determine search area for investigation.

Could find no evidence of the original corner, remonumentation of the corner or any bearing trees.

Relocated corner by single proportionate (on line) measure between adjacent section corners.

Set Harrison Monument on 9-1-1977

SEAL:



DATA SHOWN HERE ON  
 CERTIFIED CORRECT:

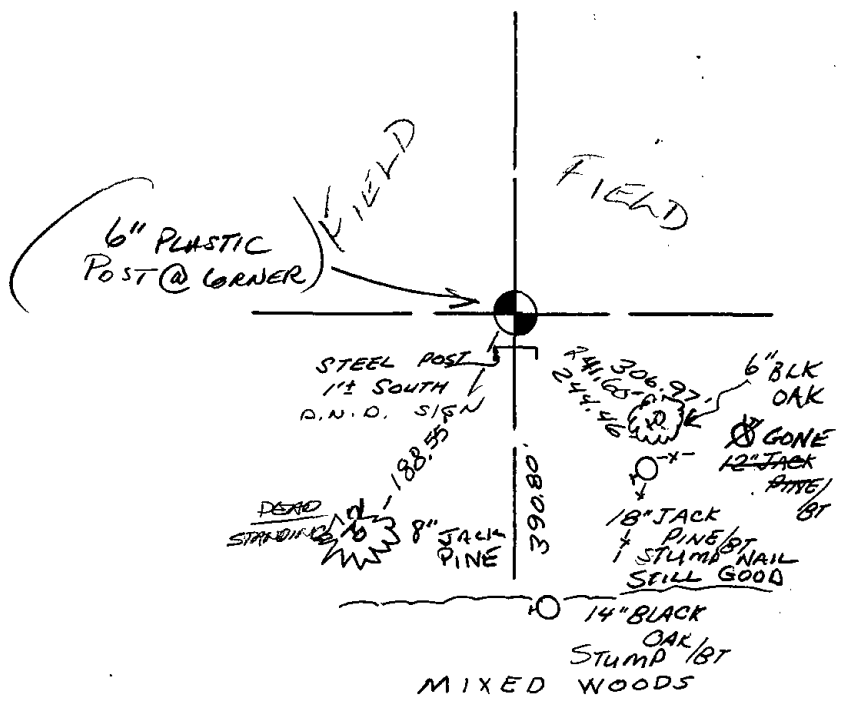
*Dale C. Hagen*  
 Registered Land Surveyor  
 DATE: 11-2-1977

## TIE SKETCH

Show at least four ties, also fence lines, roads, topo, size and type of witness trees' and if off road - best way to arrive at corner.

### NOTE

Ties in trees to nail in disc.



## MAINTENANCE RECORD

Date	Init.	Remarks
8-23-82	PK-SS	OK
7-6-92	SG-BS	1-GONE, 2-NEW MON. OK
2-25-02	SS	OK - ADD NEW SIGN
10-22-07	SG-GR	MON. OK, OK