

PUBLIC LAND SURVEY MONUMENT RECORD

TYPE OF MONUMENT: HARRISON
ADAMS COUNTY COORDINATES, NAD 83 (2007)

N. 266592.009

E. 567451.179

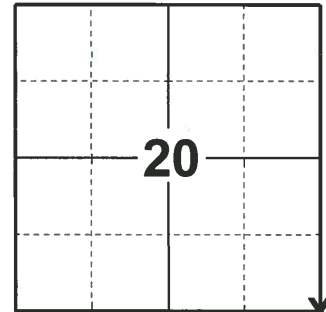
ELEVATION- DATUM

FIELD WORK DATE: 04/15/2019

BASIS FOR MONUMENT LOCATION

1983 - PLS 1551 EXCAVATED CORNER AREA WITH SHOVEL, NO SIGN OF CORNER STAKE OR ORIGINAL BEARING TREES FOUND. CORNER WAS RESET USING PRORATION FOR N-S LOCATION FROM EXISTING MONUMENTS AT THE NW OF 21, AND THE SW OF 33. E-W POSITION WAS DETERMINED BY USING RECORD DISTANCE FROM THE EAST (SE OF 21), PLUS ONE CHAIN. THIS LOCATION FALLS IN THE CENTER OF AN OLD ROAD BED RUNNING NORTH FROM CHICAGO AVE. TO C.T.H. C. I FELT THE ORIGINAL SURVEY WAS ONE CHAIN IN ERROR HERE BECAUSE OF THE LARGE DIFFERENCE BETWEEN EXISTING CORNERS AND THE ORIGINAL DISTANCE, AND THE ORIGINAL SURVEY CALLS THE SOUTH LINE OF SEC. 21 THE SAME DISTANCE AS THE SOUTH LINE OF SEC. 22 (79.20 CH.), AND FINALLY BECAUSE THE OLD ROAD BED PROBABLY REPRESENTS ANY FORMER OCCUPATION LINES IN THE AREA.

2019 - PLS 2675 FOUND HARRISON FLUSH WITH THE OLD ROAD BED AND 4 WITNESSES. THE MONUMENT AGREES WITH ALL 4 WITNESSES. ACCEPTED THE HARRISON AS THE CORNER LOCATION. SET 4 NEW TIES AND MEASURED TO THE EXISTING WITNESSES.



LOCATION
(INDICATE CORNER BY "X")

SEAL:

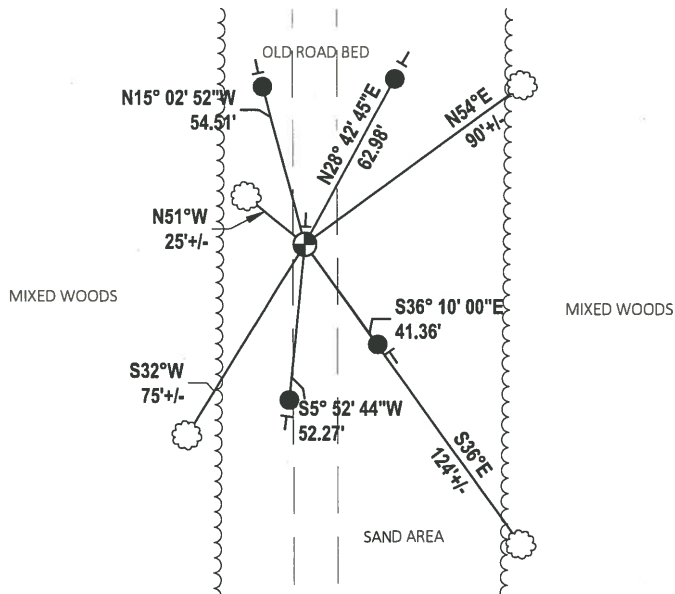
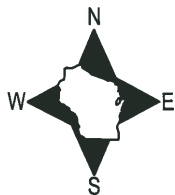


DATA SHOWN HERE ON THIS TIE SHEET IS CORRECT AND COMPLETE TO THE BEST OF MY KNOWLEDGE AND BELIEF.

PROFESSIONAL LAND SURVEYOR

DATE 5/1/19

- TIE SKETCH



- SET 3/4" x 18" IRON REBAR, 1.50#/FT
- ⊕ FOUND HARRISON MONUMENT
- VINYL "T" POST
- ☼ WITNESS TREE

U.S. PUBLIC LAND SURVEY MONUMENT RECORD

ADAMS COUNTY

TYPE OF MONUMENT: Standard Harrison

STATE PLANE COORDINATES: N _____
E _____

ELEVATION — M.S.L. DATUM: _____

THETA ANGLE: _____

FIELD BOOK: Adams County PAGE 64

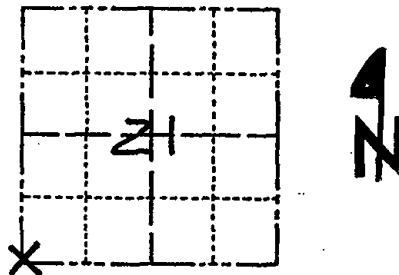
DRAWN BY: D. Riesop

CORNER NO. 85

SECTION 21

TOWN 19N

RANGE 7E



LOCATION
(Indicated by 'X')

SEAL:



DATA SHOWN HERE ON
CERTIFIED CORRECT:

David C. Riesop
Registered Land Surveyor

DATE: 8/25/83

BASIS FOR MONUMENT LOCATION

Show info such as: History of corner, with reference to Vol. and pg., dates, surveyor; exact description of monument replaced; if location computed, by taped or EDM traverse; landowner remarks, etc. (Use reverse side if necessary) (in conformance with Section A-E 502 of the Wisconsin Administrative Code)

Excavated corner area with shovel, no sign of corner stake or original bearing trees found.

Corner was reset using proration for N-S location from existing monuments at the NW of 21, and the SW of 33. E-W position was determined by using record distance from the East (SE of 21), plus one chain.

This location falls in the center of an old road bed running North from Chicago Ave. to C.T.H. C.

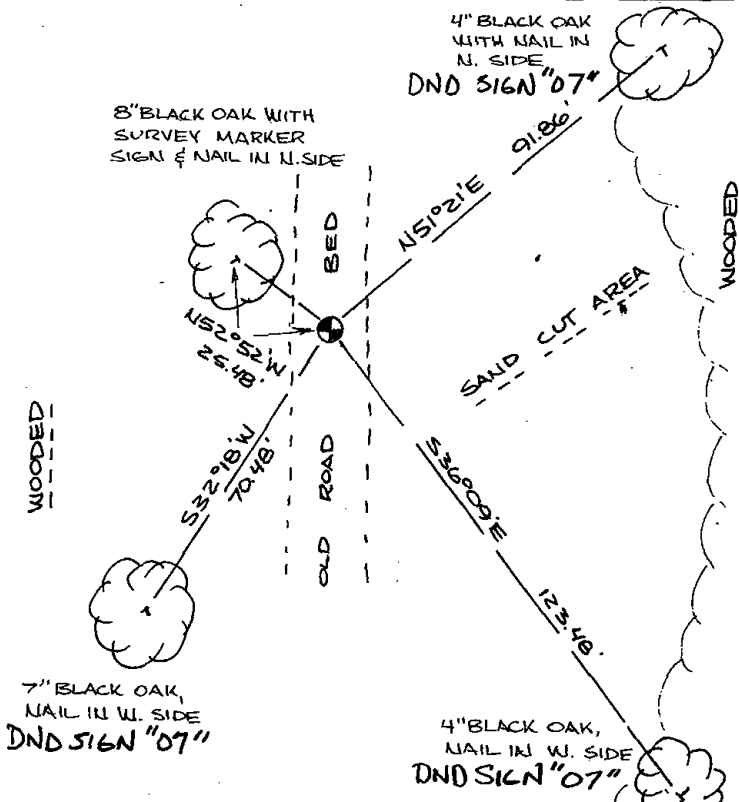
I felt the original survey was one chain in error here because of the large difference between existing corners and the original distance, and the original survey calls the South line of Sec. 21 the same distance as the South line of Sec. 22 (79.20 ch.), and finally because the old road bed probably represents any former

occupation lines in the area.
TIE SKETCH

Show at least four ties, also fence lines, roads, topo, size and type of witness trees and if off road - best way to arrive at corner.

filed for record this 28th
day of Sept 1983
per 59.60, Wisconsin Statute.
D. Riesop
ADAMS COUNTY SURVEYOR

SCALE 8" = 40'



MAINTENANCE RECORD

Date	Init.	Remarks
7-13-92	JG BS	OK
2-25-02	JG	OK
11-7-07	JG	OK