

21
SECTION

19
TOWN

07
RANGE

ADAMS COUNTY

COUNTY CORNER NO: 87

ROMPORTOL ID: 41907210000

PUBLIC LAND SURVEY MONUMENT RECORD

TYPE OF MONUMENT: 2-3/8" O.D. IRON PIPE
ADAMS COUNTY COORDINATES, NAD 83 (2007)

N. 266648.246

E. 572744.449

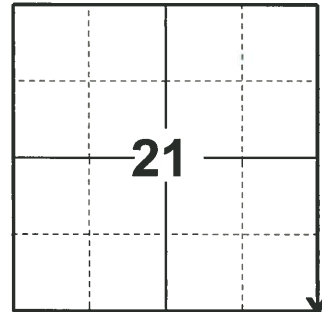
ELEVATION- DATUM

FIELD WORK DATE: 04/16/2019

BASIS FOR MONUMENT LOCATION

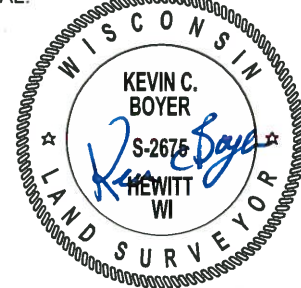
1983 - PLS 1551 CORNER WAS RESET FROM ORIGINAL TIE TO WHITE OAK, (SE BT) NOW INDENTATION ON HOGBACK RIDGE. THIS LOCATION FITS WITHIN 3' OF ORIGINAL DISTANCE TO THE W $\frac{1}{4}$ CORNER OF THIS SECTION AS SET BY REMAINS OF BEARINGS STUMP. IT IS ALSO WITHIN 2' OF A LINE EXTENDED FROM THE NW CORNER THROUGH THE W $\frac{1}{4}$ CORNER. THIS POSITION WAS ACCEPTED OVER ONE OF PRORATION BECAUSE OF THE ABOVE REASONS, AND BECAUSE THE NEAREST MONUMENTS FOR E-W CONTROL ARE 2 MILES IN EITHER DIRECTION. PROBED CORNER AREA FOR STAKE, NOTHING WAS FOUND. SET PIPE BECAUSE OF UNSTABLE GROUND AND TIED AS SHOWN.

2019 - PLS 2675 FOUND 2-3/8" O.D. IRON PIPE 10" ABOVE THE SWAMP SURFACE AND NO TIES OR WITNESSES. ACCEPTED THE 2-3/8" O.D. IRON PIPE AS THE CORNER LOCATION AND SET 4 NEW TIES.



LOCATION
(INDICATE CORNER BY "X")

SEAL:

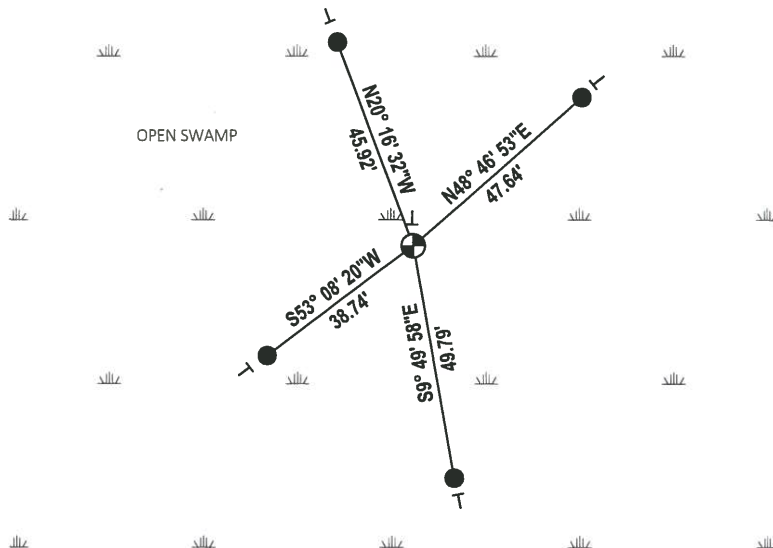
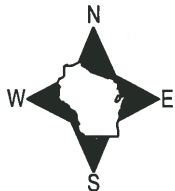


DATA SHOWN HERE ON THIS TIE SHEET IS CORRECT AND COMPLETE TO THE BEST OF MY KNOWLEDGE AND BELIEF.

PROFESSIONAL LAND SURVEYOR

DATE 5/1/19

- TIE SKETCH



- SET 3/4" x 48" IRON REBAR, 1.50#/FT
- ⊕ FOUND 2-3/8" O.D. IRON PIPE MONUMENT
- ⊣ VINYL "T" POST

U.S. PUBLIC LAND SURVEY MONUMENT RECORD

ADAMS COUNTY

TYPE OF MONUMENT: 2" I.D. x 60" galvanized pipe

STATE PLANE COORDINATES: N _____
E _____

ELEVATION — M.S.L. DATUM: _____

THETA ANGLE: _____

FIELD BOOK: Adams County PAGE 59

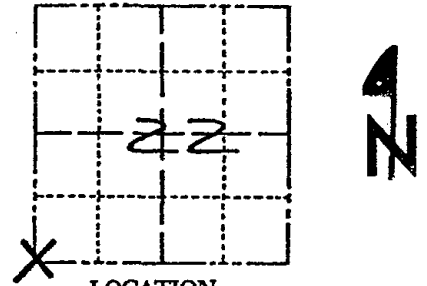
DRAWN BY: D. Riesop

CORNER NO. 87

SECTION 22

TOWN 19N

RANGE 7E



LOCATION
(Indicated by 'X')

BASIS FOR MONUMENT LOCATION

Show info such as: History of corner, with reference to Vol. and pg., dates, surveyor; exact description of monument replaced; if location computed, by taped or EDM traverse; landowner remarks, etc. (Use reverse side if necessary) (in conformance with Section A-E 502 of the Wisconsin Administrative Code)

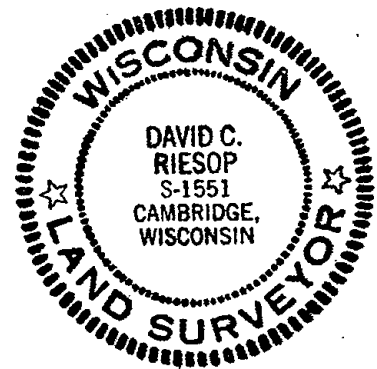
Corner was reset from original tie to White Oak, (SE BT) now indentation on hogback ridge.

This location fits within 3' of original distance to the W 1/4 corner of this section as set by remains of bearing tree stump. It is also within 2' of a line extended from the NW corner through the W 1/4 corner.

This position was accepted over one of proration because of the above reasons, and because the nearest monuments for E-W control are 2 miles in either direction.

Probed corner area for stake, nothing was found. Set pipe because of unstable ground and tied as shown.

SEAL:



DATA SHOWN HERE ON
CERTIFIED CORRECT:

David C. Riesop
Registered Land Surveyor

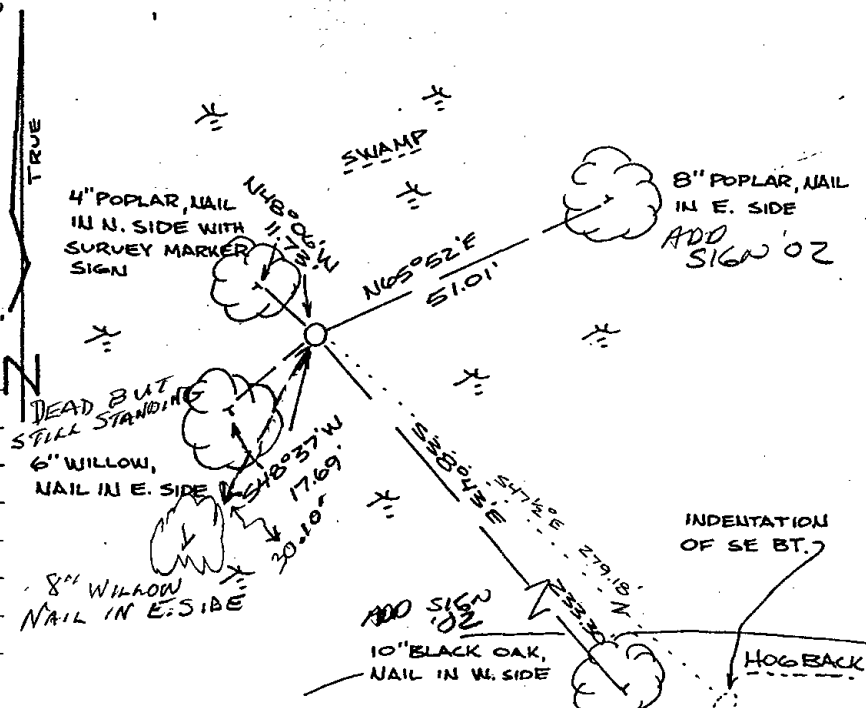
DATE: 7/28/83

TIE SKETCH

Show at least four ties, also fence lines, roads, topo, size and type of witness trees and if off road - best way to arrive at corner.

filed for record this... 17th
day of August 1983
per 59.60 Wisconsin Statutes.
H. Reinhardt
ADAMS COUNTY SURVEYOR

SCALE 8 1" = 30'



MAINTENANCE RECORD

Date	Init.	Remarks
6-12-92	JG-BS	1-NEW, ALL OK
5-21-02	SS	OK