

23
SECTION

19
TOWN

07
RANGE

ADAMS COUNTY

COUNTY CORNER NO: 90
ROMPORTOL ID: 41907230020

PUBLIC LAND SURVEY MONUMENT RECORD

TYPE OF MONUMENT: HARRISON
ADAMS COUNTY COORDINATES, NAD 83 (2007)

N. 266625.003

E. 580667.839

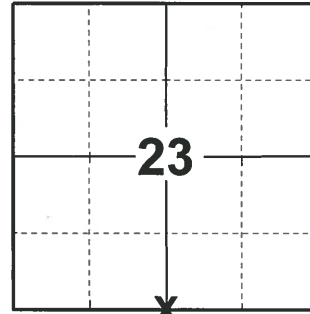
ELEVATION- _____ DATUM _____

FIELD WORK DATE: 04/17/2019

BASIS FOR MONUMENT LOCATION

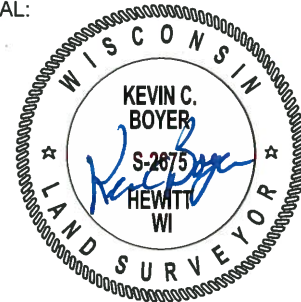
1983 - PLS 1551 DUG IN AREA FOR CORNER, NOTHING WAS FOUND. BEARING TREES ARE NO LONGER EVIDENT AND THERE ARE NO SIGNS OF OCCUPATION. CORNER WAS RESET PROPORTIONALLY ON STRAIGHT LINE BETWEEN ADJACENT SECTION CORNERS.

2019 - PLS 2675 FOUND HARRISON 3" BELOW THE GROUND SURFACE AND 2 WITNESSES. THE MONUMENT AGREES WITH THE EXISTING WITNESSES. ACCEPTED THE HARRISON AS THE CORNER LOCATION. SET 4 NEW TIES AND MEASURED TO THE EXISTING WITNESSES.



LOCATION
(INDICATE CORNER BY "X")

SEAL:



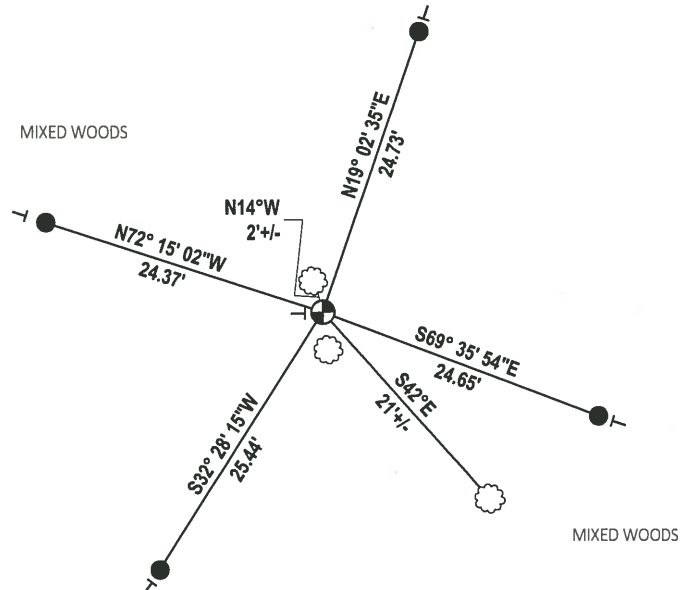
DATA SHOWN HERE ON THIS TIE SHEET IS CORRECT AND COMPLETE TO THE BEST OF MY KNOWLEDGE AND BELIEF.

PROFESSIONAL LAND SURVEYOR

DATE 5/1/19

TIE SKETCH

NOTE: TREE WITH DND SIGN ±2' SOUTH OF CORNER.



- SET 3/4" x 18" IRON REBAR, 1.50#/FT
- ⊕ FOUND HARRISON MONUMENT
- ┆ VINYL "T" POST
- ☁ WITNESS TREE

U.S. PUBLIC LAND SURVEY MONUMENT RECORD

ADAMS COUNTY

TYPE OF MONUMENT: Standard Harrison

STATE PLANE COORDINATES: N _____
E _____

ELEVATION — M.S.L. DATUM: _____

THETA ANGLE: _____

FIELD BOOK: Adams County PAGE 56

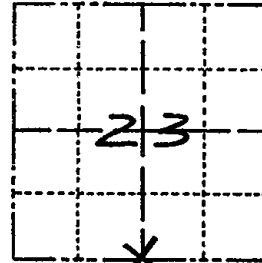
DRAWN BY: D. Riesop

CORNER NO. 90

SECTION 23

TOWN 19N

RANGE 7E



LOCATION
(Indicated by 'X')

BASIS FOR MONUMENT LOCATION

Show info such as: History of corner, with reference to Vol. and pg., dates, surveyor; exact description of monument replaced; if location computed, by taped or EDM traverse; landowner remarks, etc. (Use reverse side if necessary)
(in conformance with Section A-E 502 of the Wisconsin Administrative Code)

Dug in area for corner, nothing was found. Bearing trees are no longer evident and there are no signs of occupation.

Corner was reset proportionally on straight line between adjacent section corners.

HARRISON Co. ± 2" Below GROUND SURFACE

SEAL:



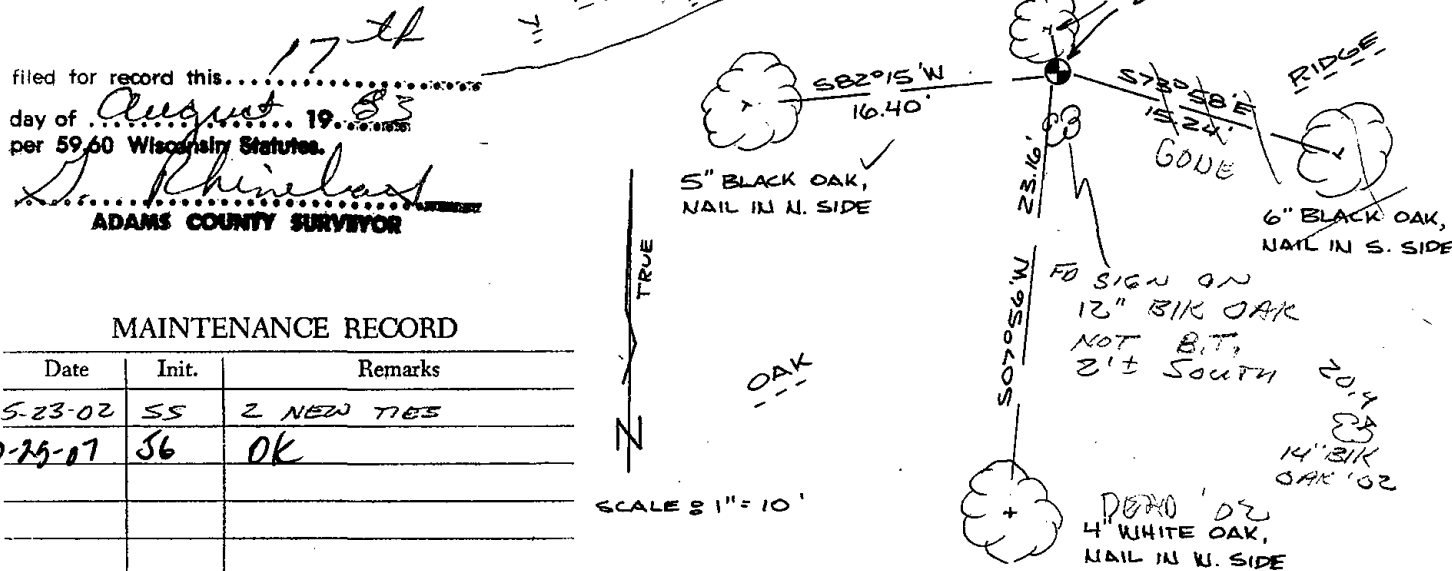
DATA SHOWN HERE ON CERTIFIED CORRECT:

David C. Riesop
Registered Land Surveyor

DATE: 7/27/83

TIE SKETCH

Show at least four ties, also fence lines, roads, topo, size and type of witness trees' and if off road - best way to arrive at corner.



filed for record this... 17th day of August 1983 per 59.60 Wisconsin Statutes.
D. Rhineland
ADAMS COUNTY SURVEYOR

MAINTENANCE RECORD

Date	Init.	Remarks
5-23-02	SS	2 NEW TIES
10-25-07	SB	OK

SCALE: 1" = 10'