

26
SECTION

19
TOWN

07
RANGE

ADAMS COUNTY

COUNTY CORNER NO: 99

ROMPORTOL ID: 41907262000

PUBLIC LAND SURVEY MONUMENT RECORD

TYPE OF MONUMENT: HARRISON (BROKEN-TOP)

ADAMS COUNTY COORDINATES, NAD 83 (2007)

N. 264010.834

E. 583334.530

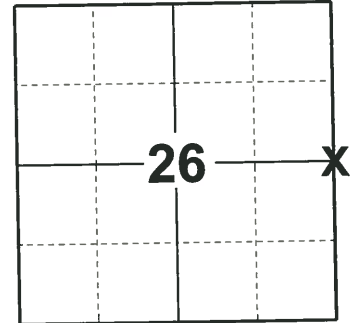
ELEVATION- - - - - DATUM - - - - -

FIELD WORK DATE: 05/20/2019

BASIS FOR MONUMENT LOCATION

1973 - PLS 878 SET ON A STRAIGHT LINE EQUIDISTANT BETWEEN SECTION CORNERS. SET HARRISON MONUMENT ON AUGUST 8, 1972.

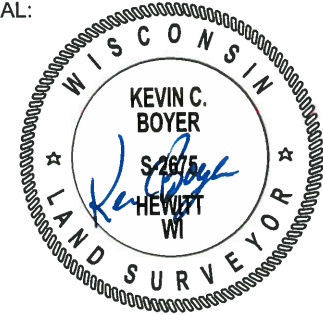
2019 - PLS 2675 FOUND HARRISON (BROKEN-TOP) 24" BELOW THE ROAD SURFACE AND FOUND ALL 4 EXISTING TIES BUT THEY WERE DISTURBED. ACCEPTED THE HARRISON (BROKEN-TOP) AS THE CORNER LOCATION AND SET 4 NEW TIES.



LOCATION

(INDICATE CORNER BY "X")

SEAL:



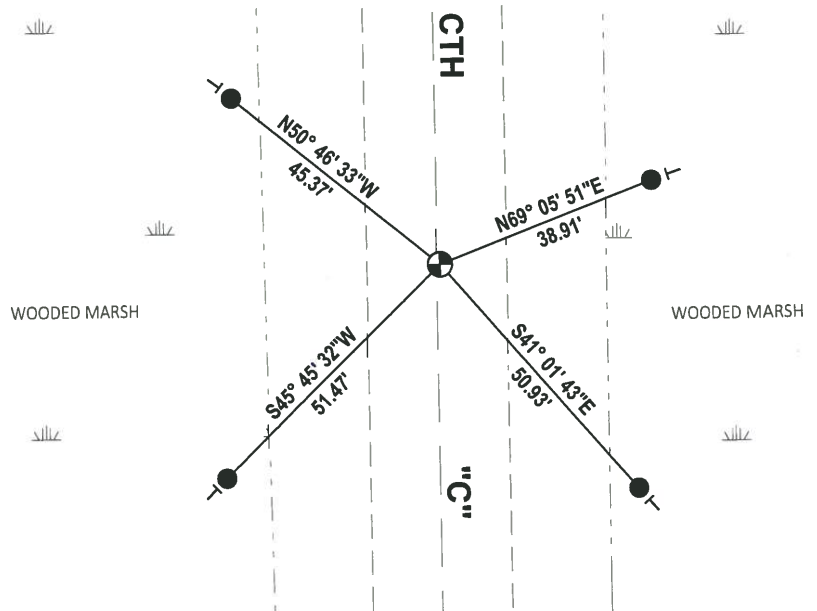
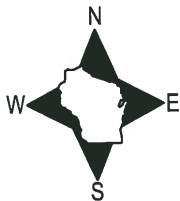
DATA SHOWN HERE ON THIS TIE SHEET IS CORRECT AND COMPLETE TO THE BEST OF MY KNOWLEDGE AND BELIEF.

PROFESSIONAL LAND SURVEYOR

DATE 6/4/19

- TIE SKETCH

NOTE: THE CORNER LANDS .5± EAST OF CTH "C" CENTERLINE.



- SET 3/4" x 18" IRON REBAR, 1.50#/FT
- FOUND HARRISON (BROKEN-TOP) MONUMENT
- VINYL "T" POST

ADAMS COUNTY

Survey Monument Record

TYPE OF MONUMENT: 30" HARRISON

STATE PLANE COORDINATES: N _____

E _____

ELEVATION — M.S.L. DATUM: _____

THETA ANGLE: _____

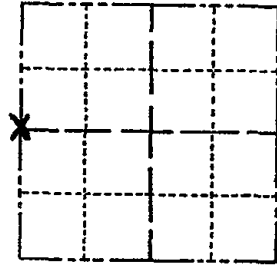
FIELD BOOK: 106? PAGE ?

CORNER NO. 170 99

SECTION 25

TOWN 19

RANGE 7



LOCATION
(Indicated by 'X')

SEAL:



BASIS FOR MONUMENT LOCATION

(Use reverse side if necessary)

Show info such as: History of corner, with reference to Vol. and pg, dates, surveyor; exact description of monument replaced; if location computed, by taped or EDM traverse; landowner remarks, etc.

Set monument

August 8, 1972

Anthony B. Kiedrowski R.L.S. 878

Set on a straight line equidistant between section corners.

CERTIFIED CORRECT:

Anthony B. Kiedrowski
Registered Land Surveyor

DATE: 1-30-73

COR. O.K. 12-1-77 LH-SS
TOP BROCKN - 3 NEW TIES 8-25-82 PK-SS
OK 3-18-87 SS
11 1-8-92 KZ-JG

TIE SKETCH

OK 3/28/97 JG-SS OK, 7-24-07-JG

(Show at least four ties)

