

30
SECTION

19
TOWN

07
RANGE

ADAMS COUNTY

COUNTY CORNER NO: 102

ROMPORTOL ID: 41907300020

PUBLIC LAND SURVEY MONUMENT RECORD

TYPE OF MONUMENT: HARRISON
ADAMS COUNTY COORDINATES, NAD 83 (2007)

N. 261267.379

E. 559528.158

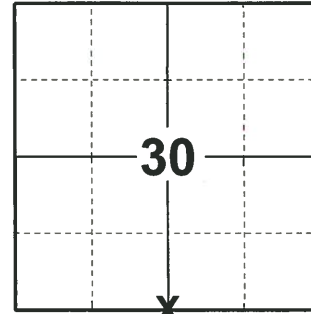
ELEVATION- _____ DATUM _____

FIELD WORK DATE: 04/25/2019

BASIS FOR MONUMENT LOCATION

1977 - PLS 1103 RAN EDM/T2 TRAVERSE AROUND SECTION 31 AND MANY OF THE ADJACENT SECTIONS TO DETERMINE SEARCH AREA FOR INVESTIGATION. AN INTENSIVE SEARCH YIELDED NO EVIDENCE OF THE ORIGINAL CORNER, REMONUMENTATION OF ANY BEARING TREES. RELOCATED CORNER BY SINGLE PROPORTIONATE MEASURE (ON LINE) BETWEEN ADJACENT SECTION CORNERS. SET HARRISON MONUMENT ON 9-2-77.

2019 - PLS 2675 FOUND HARRISON MONUMENT 6" BELOW THE SWAMP SURFACE, 1 TIE, AND 3 WITNESSES. THE MONUMENT AGREES WITH THE EXISTING TIE AND WITNESSES. ACCEPTED THE HARRISON AS THE CORNER LOCATION. SET 4 NEW TIES AND MEASURED TO THE EXISTING TIE AND WITNESSES.



LOCATION

(INDICATE CORNER BY "X")

SEAL:



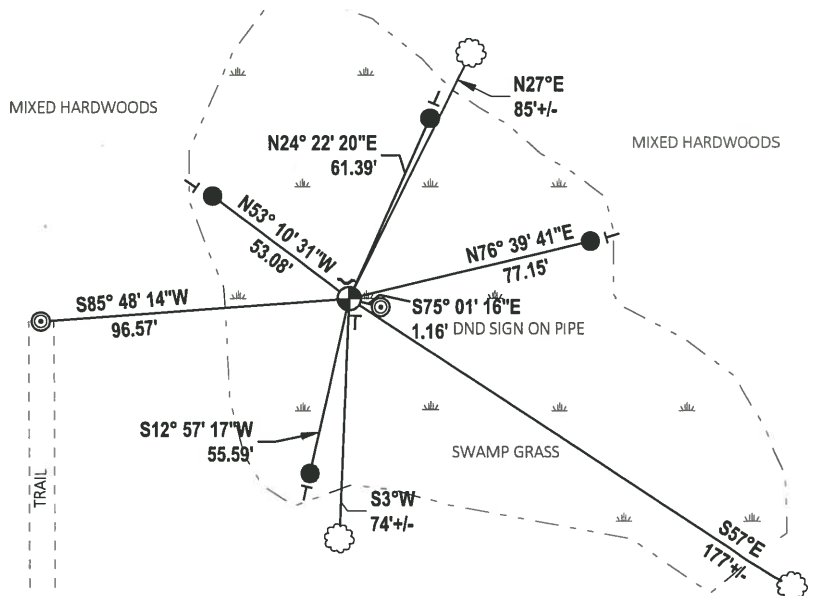
DATA SHOWN HERE ON THIS TIE SHEET IS CORRECT AND COMPLETE TO THE BEST OF MY KNOWLEDGE AND BELIEF.

PROFESSIONAL LAND SURVEYOR

DATE 5/1/19

- TIE SKETCH

NOTE: THE CORNER LANDS 96'± EAST OF TRAIL.



- SET 3/4" x 48" IRON REBAR, 1.50#/FT
- ◎ FOUND 2-3/8" O.D. IRON PIPE
- ⊕ FOUND HARRISON MONUMENT
- ┌ STEEL FENCE POST
- └ VINYL "T" POST
- ☼ WITNESS TREE

ADAMS COUNTY

Survey Monument Record

TYPE OF MONUMENT: HARRISON STD.

STATE PLANE COORDINATES: N _____
E _____

ELEVATION — M.S.L. DATUM: _____

THETA ANGLE: _____

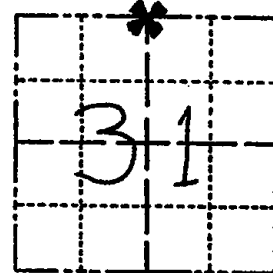
FIELD BOOK: 54 PAGE 30

CORNER NO. 102

SECTION 31

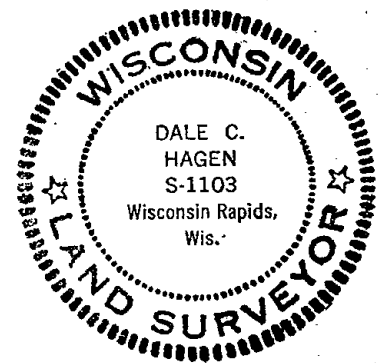
TOWN 19

RANGE 7



LOCATION
(Indicated by 'X')

SEAL:



BASIS FOR MONUMENT LOCATION

(Use reverse side if necessary)

Show info such as: History of corner, with reference to Vol. and pg. dates, surveyor; exact description of monument replaced; if location computed, by taped or EDM traverse; landowner remarks, etc.

Ran EDM/T2 traverse around Section 31 and many of the adjacent sections to determine search area for investigation.

An intensive search yielded no evidence of the original corner, remonumentation or any bearing trees.

Relocated corner by single proportionate measure (on line) between adjacent section corners.

Set Harrison Monument on 9-2-77.

CERTIFIED CORRECT:

Dale C. Hagen
Registered Land Surveyor
DATE: 11-2-77

MAR 25, 85 OK K. CARLSON

TIE SKETCH

7/1/92 ALL OK JG-BS

(Show at least four ties)

TIES OK 2-26-02-SS

NOTE

ALL OK, 10-23-07-JG

Ties in trees to nail in disc.

