

30 SECTION 19 TOWN 07 RANGE

ADAMS COUNTY

COUNTY CORNER NO: 103
ROMPORTOL ID: 41907300000

PUBLIC LAND SURVEY MONUMENT RECORD

TYPE OF MONUMENT: HARRISON
ADAMS COUNTY COORDINATES, NAD 83 (2007)

N. 261277.123

E. 562171.475

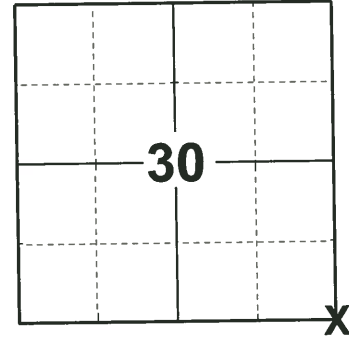
ELEVATION- _____ DATUM _____

FIELD WORK DATE: 05/15/2019

BASIS FOR MONUMENT LOCATION

1977 - PLS 1103 RAN EDM/T2 TRAVERSE AROUND SECTIONS 30 & 31, AND MANY ADJOINING SECTIONS TO DETERMINE SEARCH AREA FOR INVESTIGATION. COULD FIND NO EVIDENCE OF THE ORIGINAL CORNER OR ANY BEARING TREES. COULD FIND NO REMONUMENTATION OF THIS CORNER. RELOCATED CORNER BY PROPORTIONING ORIGINAL NOTES BETWEEN SE OF 31 AND NE OF 30, AND ON LINE BETWEEN SAME. THIS LOCATION FITS THE ORIGINAL DIMENSIONS QUITE WELL. THERE IS NO OCCUPATION TO INDICATE ANY BETTER LOCATION. SET MONUMENT ON 9-12-1977.

2019 - PLS 2675 FOUND HARRISON 3" ABOVE THE SWAMP SURFACE AND 3 WITNESSES. THE MONUMENT AGREES WITH ALL 3 WITNESSES. ACCEPTED THE HARRISON AS THE CORNER LOCATION. SET 4 NEW TIES AND MEASURED TO THE EXISTING WITNESSES.



LOCATION
(INDICATE CORNER BY "X")

SEAL:

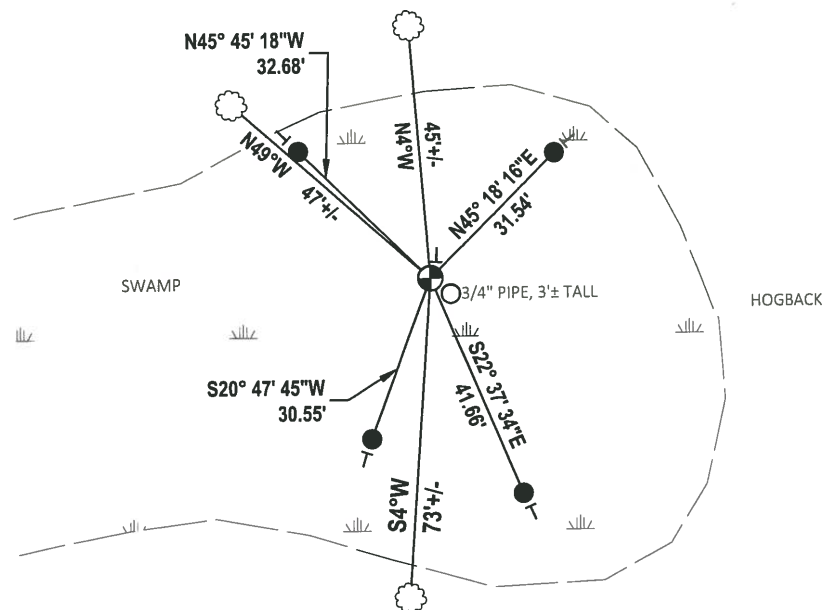
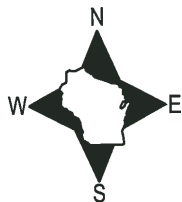


DATA SHOWN HERE ON THIS TIE SHEET IS CORRECT AND COMPLETE TO THE BEST OF MY KNOWLEDGE AND BELIEF.

PROFESSIONAL LAND SURVEYOR

DATE 6/4/19

- TIE SKETCH

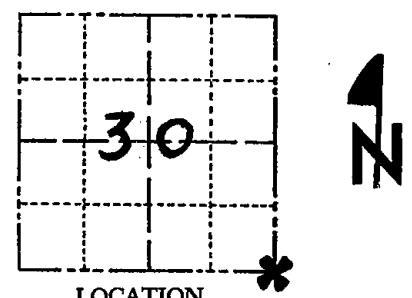


- SET 3/4" x 48" IRON REBAR, 1.50#/FT
- ⊙ FOUND HARRISON MONUMENT
- ├ VINYL "T" POST
- ☼ WITNESS TREE

Government Land Corner Certificate

ADAMS County
 TYPE OF MONUMENT: HARRISON STD.
 STATE PLANE COORDINATES: N _____
 E _____
 ELEVATION — M.S.L. DATUM: _____
 THETA ANGLE: _____
 FIELD BOOK: 54 PAGE 36
 DRAWN BY: SCOTT SORENSEN

CORNER NO. 103
 SECTION 30
 TOWN 19
 RANGE 7



LOCATION
(Indicated by 'X')

BASIS FOR MONUMENT LOCATION

Show info such as: History of corner, with reference to Vol. and pg., dates, surveyor; exact description of monument replaced; if location computed, by taped or EDM traverse; landowner remarks, etc. (Use reverse side if necessary)

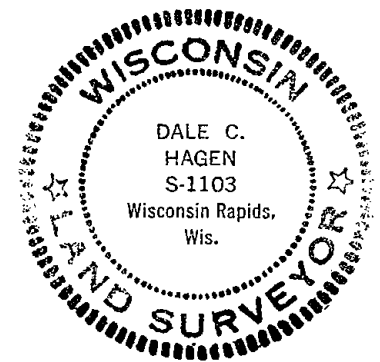
Ran EDM traverse around Sections 30 & 31, and many adjoining sections to determine search area for investigation.

Could find no evidence of the original corner or any bearing trees. Could find no remonumentation of this corner.

Relocated corner by proportioning original notes between SE of 31 and NE of 30, and on line between same. This location fits the original dimensions quite well. There is no occupation to indicate any better location.

Set monument on 9-12-1977.

SEAL:



DATA SHOWN HERE ON
CERTIFIED CORRECT:

Dale C. Hagen
Registered Land Surveyor

DATE: December 27, 1977

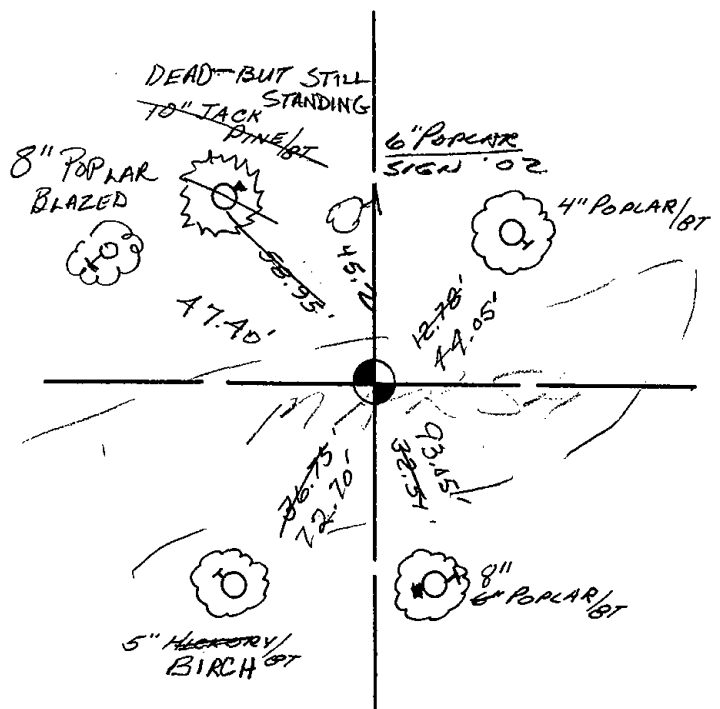
TIE SKETCH

Show at least four ties, also fence lines, roads, topo, size and type of witness trees' and if off road - best way to arrive at corner.

NOTE

Ties in trees to nail in disc.

3/4" "TUBE OR HANDLE" OF SOME KIND @ HAR. - STICKS UP 3" MAINTENANCE RECORD



| Date | Init. | Remarks |
|----------|-------|---------------|
| 7-1-92 | G-BS | 3-GONE, 4-NEW |
| 2-26-02 | SS | 1 NEW |
| 10-24-07 | SG-GR | OK |
| | | |
| | | |