

PUBLIC LAND SURVEY MONUMENT RECORD

TYPE OF MONUMENT: 2-3/8" O.D. IRON PIPE
ADAMS COUNTY COORDINATES, NAD 83 (2007)

N. 261349.794

E. 580670.959

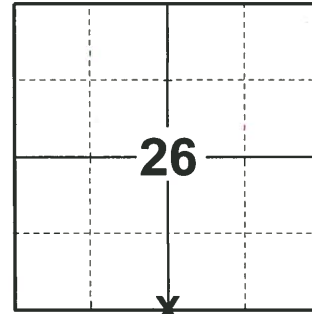
ELEVATION- _____ DATUM _____

FIELD WORK DATE: 04/17/2019

BASIS FOR MONUMENT LOCATION

1983 - PLS 1551 PROBED AREA FOR ORIGINAL CORNER STAKE AND BEARING TREES, SOME TAMARACK ROOT WAS FOUND IN THE AREA WHERE THE SW BEARING TREE WOULD HAVE BEEN, BUT NOT SUBSTANTIAL ENOUGH TO SET CORNER FROM. CORNER WAS RESET PROPORTIONALLY BETWEEN ADJACENT SECTION CORNERS IN AGREEMENT WITH SECTION SUMMARY BY SURVEYOR PAUL CARROLL, AND CERTIFIED SURVEY MAP NO. 568.

2019 - PLS 2675 FOUND 2-3/8" O.D. IRON PIPE 10" ABOVE THE SWAMP SURFACE AND 2 WITNESSES. THE MONUMENT AGREES WITH BOTH WITNESSES. ACCEPTED THE HARRISON AS THE CORNER LOCATION. SET 4 NEW TIES AND MEASURED TO THE EXISTING WITNESSES.



LOCATION
(INDICATE CORNER BY "X")

SEAL:

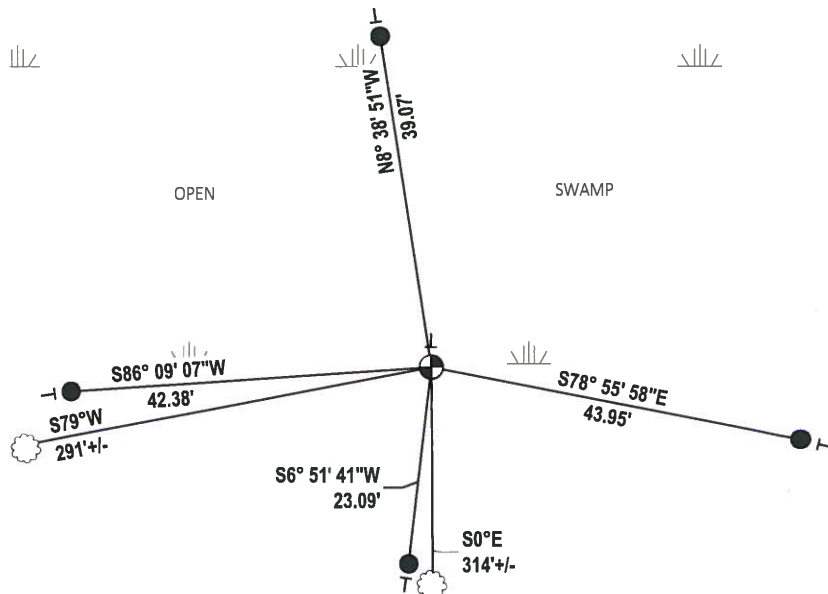
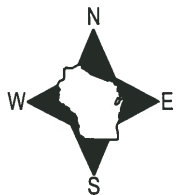


DATA SHOWN HERE ON THIS TIE SHEET IS CORRECT AND COMPLETE TO THE BEST OF MY KNOWLEDGE AND BELIEF.

PROFESSIONAL LAND SURVEYOR

DATE 5/1/19

TIE SKETCH



- SET 3/4" x 48" IRON REBAR, 1.50#/FT
- ⊕ FOUND 2-3/8" O.D. IRON PIPE MONUMENT
- ┊ VINYL "T" POST
- ☼ WITNESS TREE

