

26  
SECTION

19  
TOWN

07  
RANGE

# ADAMS COUNTY

COUNTY CORNER NO: 111

ROMPORTOL ID: 41907260000

## PUBLIC LAND SURVEY MONUMENT RECORD

TYPE OF MONUMENT: HARRISON (BROKEN-TOP)  
ADAMS COUNTY COORDINATES, NAD 83 (2007)

N. 261377.688

E. 583322.696

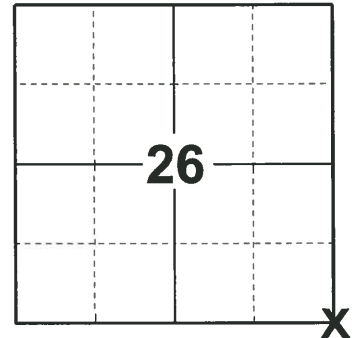
ELEVATION- - - - - DATUM - - - - -

FIELD WORK DATE: 05/20/2019

### BASIS FOR MONUMENT LOCATION

1973 - PLS 878 ACCEPTED RR SPIKE AS CORRECT IN LOCATION SINCE IT MATCHED POSSESSION EVIDENCE, AND BECAUSE IT WAS CHECKED AS PART OF A CLOSED TRAVERSE AROUND SECTIONS 25 AND 24. APPARENTLY USED IN UNRECORDED SURVEY OF CAMPFIRE LAND CO. LAND NW OF HERE. REPLACED RR SPIKE WITH HARRISON MONUMENT ON JULY 27, 1972.

2019 - PLS 2675 FOUND HARRISON (BROKEN-TOP) 18" BELOW THE ROAD SURFACE AND 1 WITNESS. THE MONUMENT AGREES WITH THE EXISTING WITNESS. ACCEPTED THE HARRISON (BROKEN-TOP) AS THE CORNER LOCATION. SET 4 NEW TIES AND MEASURED TO THE EXISTING WITNESS.



LOCATION

(INDICATE CORNER BY "X")

SEAL:



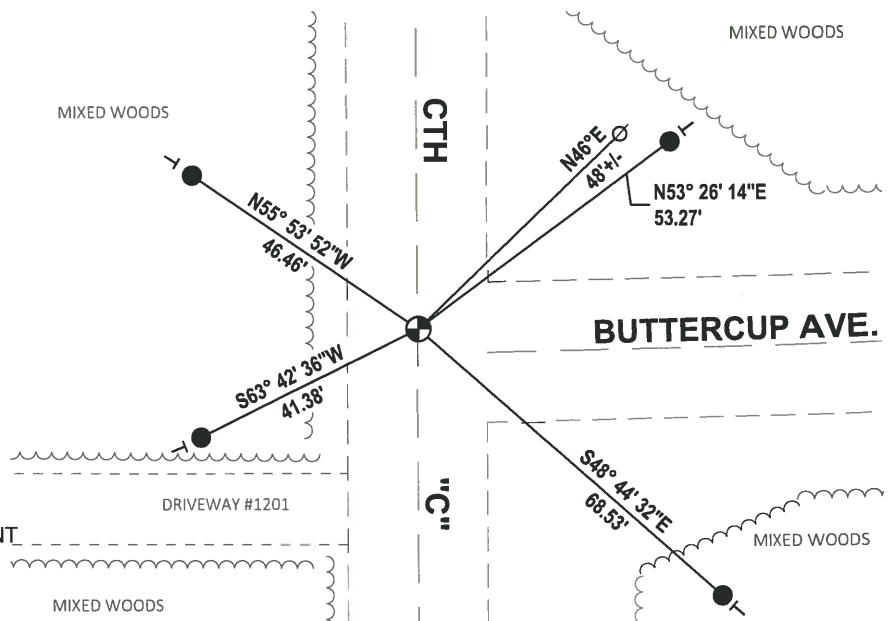
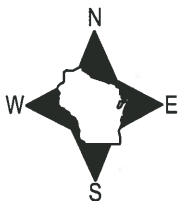
DATA SHOWN HERE ON THIS TIE SHEET IS CORRECT AND COMPLETE TO THE BEST OF MY KNOWLEDGE AND BELIEF.

PROFESSIONAL LAND SURVEYOR

DATE 6/4/19

### TIE SKETCH

NOTE: THE CORNER LANDS ON THE CENTERLINE OF CTH "C" AND 4± NORTH OF BUTTERCUP AVE. CENTERLINE.



- SET 3/4" x 18" IRON REBAR, 1.50#/FT
- ⊕ FOUND HARRISON (BROKEN-TOP) MONUMENT
- ∅ WITNESS POWER POLE
- VINYL "T" POST

ADAMS COUNTY

Survey Monument Record

CORNER NO. 166

SECTION 25

TOWN 19

RANGE 7

TYPE OF MONUMENT: 30" HARRISON

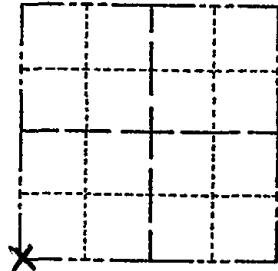
STATE PLANE COORDINATES: N

E

ELEVATION — M.S.L. DATUM:

THETA ANGLE:

FIELD BOOK: 106? PAGE ?



LOCATION (Indicated by 'X')

SEAL:

BASIS FOR MONUMENT LOCATION

(Use reverse side if necessary)

Show info such as: History of corner, with reference to Vol. and pg, dates, surveyor; exact description of monument replaced; if location computed, by taped or EDM traverse; landowner remarks, etc.

Found RR spike and set monument

July 27, 1972

Anthony B. Kiedrowski R.E.S. 878

Accepted RR spike as correct in location since it matched possession evidence, and because it was checked as part of a closed traverse around sections 25 and 24. Apparently used in unrecorded survey of Campfire land co. land NW of here.

Cor. O.K. 12-1-77 L.H. S.S.  
TOP BROKEN 3-18-82 GR-SS  
" " 3-19-87 SS



CERTIFIED CORRECT:

Anthony B. Kiedrowski  
Registered Land Surveyor

DATE: 1-30-73

TIE SKETCH Col OK 1-8-92 KE-56 CORNER OK 1-30-02 JG  
ALL OK 3-28-97 JG-SS OK, 9-24-07-56

(Show at least four ties)

