

25
SECTION

19
TOWN

07
RANGE

ADAMS COUNTY

COUNTY CORNER NO: 112

ROMPORTOL ID: 41907250020

PUBLIC LAND SURVEY MONUMENT RECORD

TYPE OF MONUMENT: HARRISON (BROKEN-TOP)
ADAMS COUNTY COORDINATES, NAD 83 (2007)

N. 261379.844

E. 585972.458

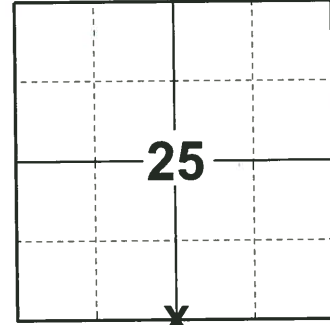
ELEVATION- _____ DATUM _____

FIELD WORK DATE: 05/21/2019

BASIS FOR MONUMENT LOCATION

1973 - PLS 878 EXCAVATED WITH BACKHOE, FOUND CHARCOAL PIT AND SET HARRISON.

2019 - PLS 2675 FOUND HARRISON (BROKEN-TOP) 24" BELOW THE ROAD SURFACE, 1 TIE, AND 2 WITNESSES. THE MONUMENT AGREES WITH THE EXISTING TIE AND WITNESSES. ACCEPTED THE HARRISON (BROKEN-TOP) AS THE CORNER LOCATION. SET 4 NEW TIES AND MEASURED TO THE EXISTING TIE AND WITNESSES.



LOCATION

(INDICATE CORNER BY "X")

SEAL:



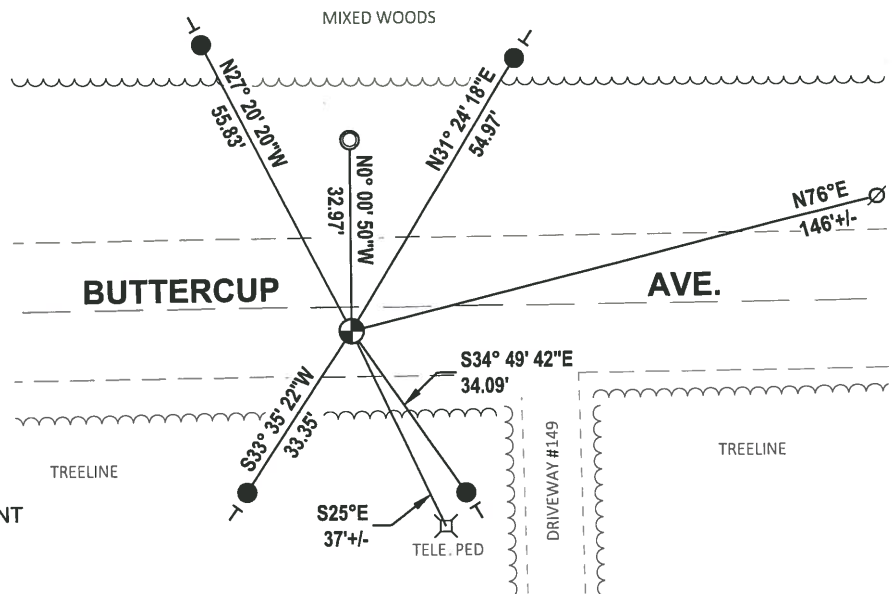
DATA SHOWN HERE ON THIS TIE SHEET IS CORRECT AND COMPLETE TO THE BEST OF MY KNOWLEDGE AND BELIEF.

PROFESSIONAL LAND SURVEYOR

DATE 6/4/19

TIE SKETCH

NOTE: THE CORNER LANDS 4± SOUTH OF BUTTERCUP AVE. CENTERLINE.



- SET 3/4" x 18" IRON REBAR, 1.50#/FT
- FOUND 1-1/4" O.D. IRON PIPE
- ⊕ FOUND HARRISON (BROKEN-TOP) MONUMENT
- ∅ WITNESS POWER POLE
- VINYL "T" POST

ADAMS COUNTY

CORNER NO. 162

Survey Monument Record

SECTION 25

TYPE OF MONUMENT: 2 1/2" IRON PIPE

TOWN 19

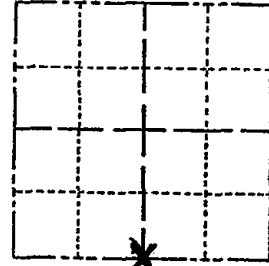
STATE PLANE COORDINATES: N _____
E _____

RANGE 7

ELEVATION — M.S.L. DATUM: _____

THETA ANGLE: _____

FIELD BOOK: 106? PAGE ?



LOCATION
(Indicated by 'X')

SEAL:



BASIS FOR MONUMENT LOCATION

(Use reverse side if necessary)

Show info such as: History of corner, with reference to Vol. and pg, dates, surveyor; exact description of monument replaced; if location computed, by taped or EDM traverse; landowner remarks, etc.

P.T
Found charcoal vein and set 2 1/2" pipe
Harrison
July 25, 1972

Anthony B. Kiedrowski R.L.S. 878
2 covered/back use,

CORNER O.K. 4-4-77 *AN-55*
" " 3-18-82 *GR-55*
" " 1-8-92 *KZ-JG*
TOP BROKEN - 18" *I* BELOW ROAD SURFACE
2 NEW TIES 3-28-97 *JG-55*
CORNER OK 1-30-02 *JG*

CERTIFIED CORRECT:

Anthony B. Kiedrowski
Registered Land Surveyor

DATE: 2-1-73

TIE SKETCH 1-NEW TIE, 9-21-07-JG

(Show at least four ties)

2
CORNER IS 9' WEST
OF BRUSHED LINE / STEEL
POSTS TO NORTH
(looks like BRUSH LINE "07")
IS DIRECTLY NORTH OF CORNER)

