

32 SECTION    19 TOWN    07 RANGE

# ADAMS COUNTY

COUNTY CORNER NO: 116  
 ROMPORTOL ID: 41907322000

## PUBLIC LAND SURVEY MONUMENT RECORD

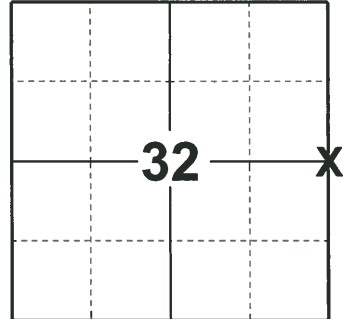
TYPE OF MONUMENT: HARRISON  
 ADAMS COUNTY COORDINATES, NAD 83 (2007)

N. 258642.702

E. 567467.136

ELEVATION- \_\_\_\_\_ DATUM \_\_\_\_\_

FIELD WORK DATE: 05/15/2019



### LOCATION

(INDICATE CORNER BY "X")

SEAL:



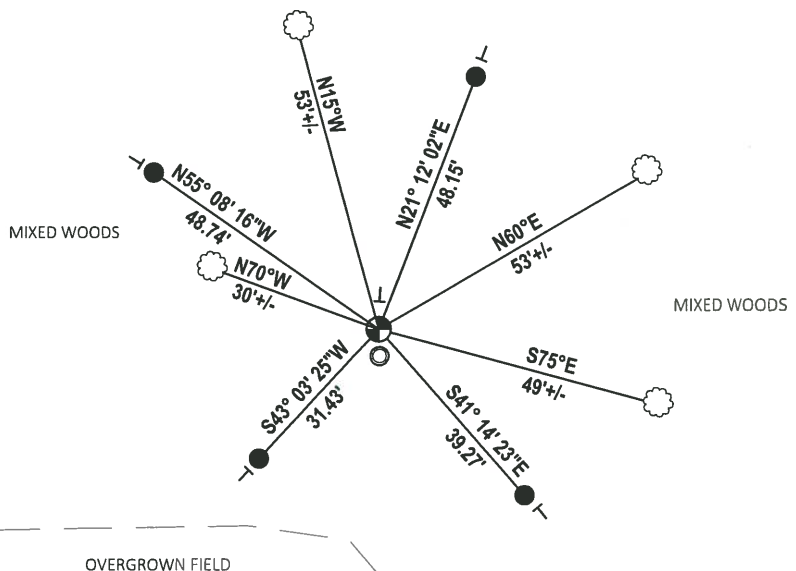
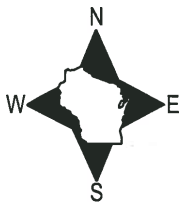
DATA SHOWN HERE ON THIS TIE SHEET IS CORRECT AND COMPLETE TO THE BEST OF MY KNOWLEDGE AND BELIEF.

PROFESSIONAL LAND SURVEYOR

DATE 6/4/19

### - TIE SKETCH

NOTE: 4± TALL 1-1/4" O.D. IRON PIPE WITH DND AND NO TRESPASSING SIGN ON IT AT CORNER.



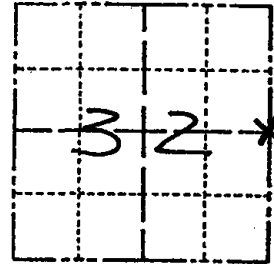
- SET 3/4" x 18" IRON REBAR, 1.50#/FT
- FOUND 1-1/4" O.D. IRON PIPE
- FOUND HARRISON MONUMENT
- └ VINYL "T" POST
- ☁ WITNESS TREE

# U.S. PUBLIC LAND SURVEY MONUMENT RECORD

## ADAMS COUNTY

TYPE OF MONUMENT: Standard Harrison  
 STATE PLANE COORDINATES: N \_\_\_\_\_  
 E \_\_\_\_\_  
 ELEVATION — M.S.L. DATUM: \_\_\_\_\_  
 THETA ANGLE: \_\_\_\_\_  
 FIELD BOOK: Adams County PAGE 57  
 DRAWN BY: D. Riesop

CORNER NO. 116  
 SECTION 32  
 TOWN 19N  
 RANGE 7E

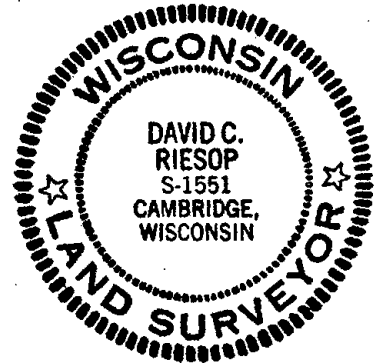


LOCATION  
(Indicated by 'X')

### BASIS FOR MONUMENT LOCATION

Show info such as: History of corner, with reference to Vol. and pg., dates, surveyor; exact description of monument replaced; if location computed, by taped or EDM traverse; landowner remarks, etc. (Use reverse side if necessary) (in conformance with Section A-E 502 of the Wisconsin Administrative Code)

SEAL:



Dug in corner area on extension of an old E-W fence line, through the center of an old N-S road bed, no trace of the original corner was found. Original bearing trees are gone.

Corner was reset proportionally on a straight line between adjacent section corners.

This location agrees with an old E-W fence line and is within 3 feet of the centerline of the above mentioned road bed.

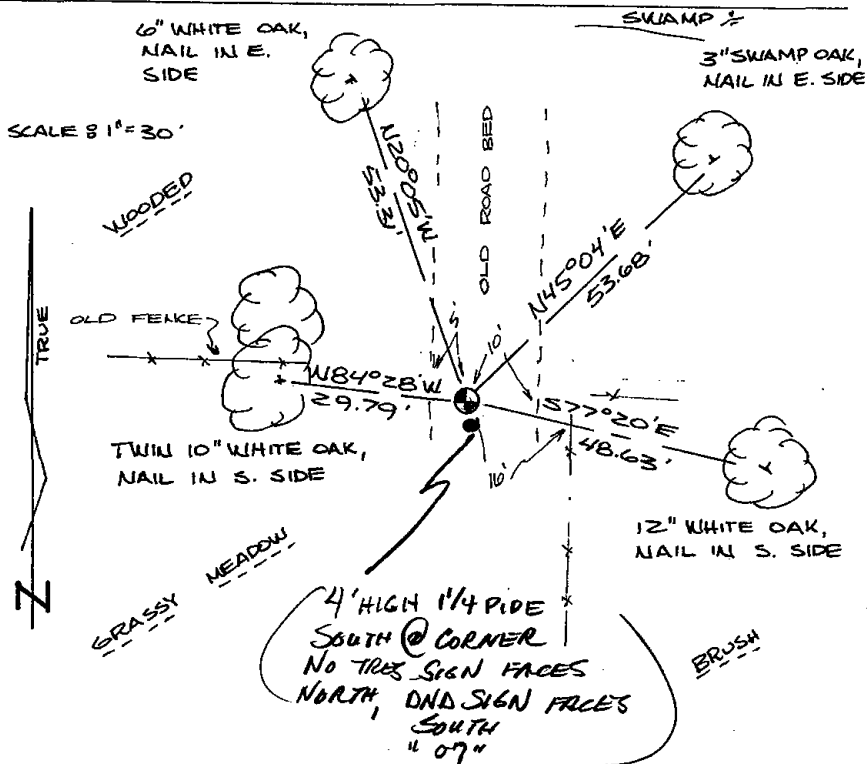
DATA SHOWN HERE ON  
CERTIFIED CORRECT:

*David C. Riesop*  
Registered Land Surveyor

DATE: 8/28/83

### TIE SKETCH

Show at least four ties, also fence lines, roads, topo, size and type of witness trees and if off road - best way to arrive at corner.



284  
 filed for record this...  
 day of Sept 1983  
 per 59.60 Wisconsin Statutes.  
*D. Riesop*  
 ADAMS COUNTY SURVEYOR

### MAINTENANCE RECORD

Date	Init.	Remarks
6-24-92	JG	O.K.
5-24-02	SS	"
10-11-07	JG	OK

# U.S. PUBLIC LAND SURVEY MONUMENT RECORD

## ADAMS COUNTY

TYPE OF MONUMENT: Standard Harrison

STATE PLANE COORDINATES: N \_\_\_\_\_  
F \_\_\_\_\_

ELEVATION — M.S.L. DATUM: \_\_\_\_\_

THETA ANGLE: \_\_\_\_\_

FIELD BOOK: Adams County PAGE 57

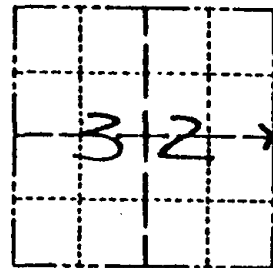
DRAWN BY: D. Riesop

CORNER NO. 116

SECTION 32

TOWN 19N

RANGE 7E



LOCATION  
(Indicated by 'X')

SEAL:



DATA SHOWN HERE ON  
CERTIFIED CORRECT:

*David C. Riesop*  
Registered Land Surveyor

DATE: 8/28/83

### BASIS FOR MONUMENT LOCATION

Show info such as: History of corner, with reference to Vol. and pg. dates, surveyor; exact description of monument replaced; if location computed, by taped or EDM traverse; landowner remarks, etc. (Use reverse side if necessary) (in conformance with Section A-E 502 of the Wisconsin Administrative Code)

Dug in corner area on extension of an old E-W fence line, through the center of an old N-S road bed, no trace of the original corner was found. Original bearing trees are gone.

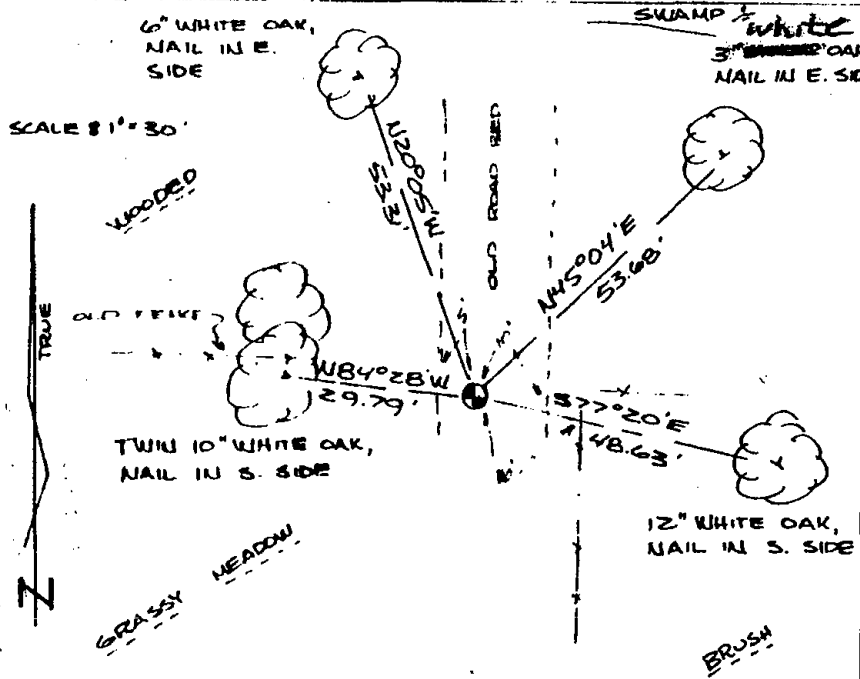
Corner was reset proportionally on a straight line between adjacent section corners.

This location agrees with an old E-W fence line and is within 3 feet of the centerline of the above mentioned road bed.

*Ties OK Oct 18 '94 Ken Carlson*

### TIE SKETCH

Show at least four ties, also fence lines, roads, topo, size and type of witness trees and if off road - best way to arrive at corner.



2544  
filed for record this \_\_\_\_\_  
day of Sept 1983  
per 59.60 Wisconsin Statutes.  
*D. Riesop*  
ADAMS COUNTY SURVEYOR

### MAINTENANCE RECORD

Date	Init.	Remarks
6-29-92	JG	O.K.