

34 SECTION 19 TOWN 07 RANGE

ADAMS COUNTY

COUNTY CORNER NO: 118
 ROMPORTOL ID: 41907342000

PUBLIC LAND SURVEY MONUMENT RECORD

TYPE OF MONUMENT: HARRISON (BROKEN-TOP)
 ADAMS COUNTY COORDINATES, NAD 83 (2007)

N. 258679.014
 E. 578041.151

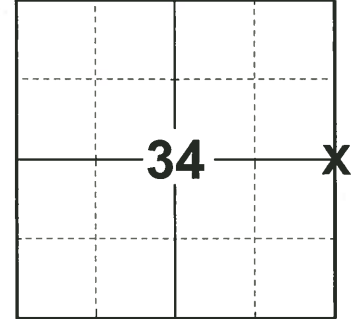
ELEVATION- DATUM

FIELD WORK DATE: 05/14/2019

BASIS FOR MONUMENT LOCATION

1979 - PLS 1478 SET PER SECTION SUMMARY BY SURVEYOR PAUL CARROLL. THIS POSITION IS EQUIDISTANT AND ON LINE BETWEEN ADJACENT SECTION CORNERS EVEN THOUGH THE NE CORNER HAS NOT BEEN SET AT THIS TIME. (NE CORNER COMPUTED FROM P.C. TRAVERSE OF SEC34 & 35) THE SECTION SUMMARY IS IN CONJUNCTION WITH CSM #569 AND IS ON FILE THE ADAMS COUNTY SURVEYOR.

2019 - PLS 2675 FOUND HARRISON (BROKEN-TOP) 4" BELOW THE GROUND SURFACE AND 3 WITNESSES. THE MONUMENT AGREES WITH ALL 3 WITNESSES. ACCEPTED THE HARRISON (BROKEN-TOP) AS THE CORNER LOCATION. SET 3 NEW TIES AND MEASURED TO THE EXISTING WITNESSES.



LOCATION
 (INDICATE CORNER BY "X")

SEAL:

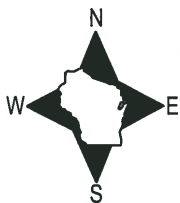


DATA SHOWN HERE ON THIS TIE SHEET IS CORRECT AND COMPLETE TO THE BEST OF MY KNOWLEDGE AND BELIEF.

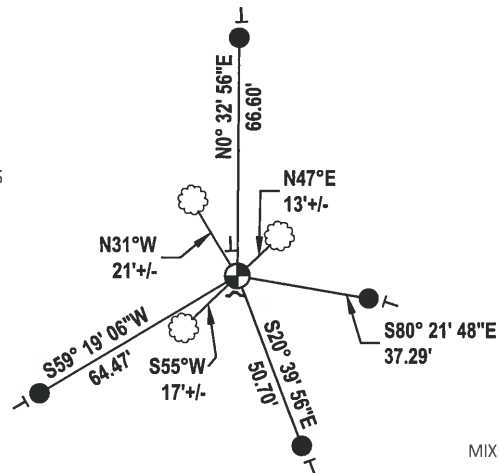
PROFESSIONAL LAND SURVEYOR

DATE 6/4/19

TIE SKETCH



MIXED WOODS



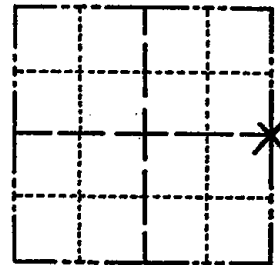
MIXED WOODS

- SET 3/4" x 18" IRON REBAR, 1.50#/FT
- ⊕ FOUND HARRISON (BROKEN-TOP) MONUMENT
- ┌ STEEL FENCE POST
- └ VINYL "T" POST
- ☁ WITNESS TREE

Government Land Corner Certificate

Adams County
 TYPE OF MONUMENT: HARRISON STANDARD
 STATE PLANE COORDINATES: N _____
 E _____
 ELEVATION — M.S.L. DATUM: _____
 THETA ANGLE: _____
 FIELD BOOK: 58 PAGE 80
 DRAWN BY: G. RHINEHART

CORNER NO. 118
 SECTION 34
 TOWN 19
 RANGE 7



LOCATION
(Indicated by 'X')

BASIS FOR MONUMENT LOCATION

Show info such as: History of corner, with reference to Vol. and pg., dates, surveyor; exact description of monument replaced; if location computed, by taped or EDM traverse; landowner remarks, etc. (Use reverse side if necessary)

SEAL:



Set per section summary by Surveyor Paul Carroll. This position is Equidistant and on line between adjacent section corners even though the NE corner has not been set at this time.

(NE corner computed from P.C. traverse of Sec. 34&35)

The section summary is in conjunction with CSM #569 and is on file the Adams County Surveyor.

DATA SHOWN HERE ON
CERTIFIED CORRECT:

Gregory P. Rhinehart
Registered Land Surveyor

DATE: 5/24/79

TIE SKETCH

Show at least four ties, also fence lines, roads, topo, size and type of witness trees' and if off road - best way to arrive at corner.

