

31
SECTION

19
TOWN

07
RANGE

ADAMS COUNTY

COUNTY CORNER NO: 123

ROMPORTOL ID: 41907310000

PUBLIC LAND SURVEY MONUMENT RECORD

TYPE OF MONUMENT: HARRISON (BROKEN-TOP)
ADAMS COUNTY COORDINATES, NAD 83 (2007)

N. 255979.799

E. 562178.565

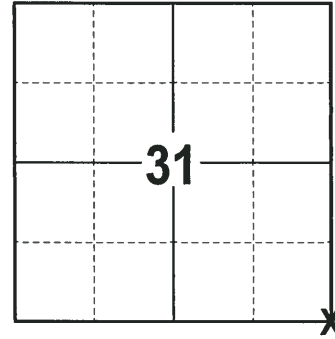
ELEVATION- _____ DATUM _____

FIELD WORK DATE: 01/30/2018

BASIS FOR MONUMENT LOCATION

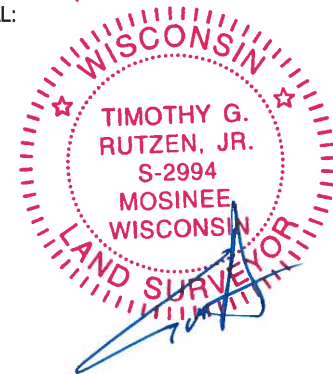
1977 - PLS 1103 RAN EDM/TRANSIT TRAVERSE AROUND SECTION 31 AND ADJACENT SECTIONS TO DETERMINE THE SEARCH AREA FOR INVESTIGATION. EXCAVATION WITH A BACKHOE BY ANTHONY B. KIEDROWSKI, ADAMS COUNTY SURVEYOR, YIELDED THE REMAINS OF A WOOD POST WITH POTTERY AROUND IT. RE-MONUMENTED THE POST WITH A HARRISON MONUMENT AND TIED OUT.

2018 - PLS 2994 FOUND A HARRISON MONUMENT WITH A BROKEN-TOP 8" BELOW THE ROAD SURFACE AND 1 TIE. THE MONUMENT AGREES WITH THE EXISTING TIE. ACCEPTED THE HARRISON MONUMENT WITH A BROKEN-TOP AS THE CORNER LOCATION. SET 3 NEW TIES AND MEASURED TO THE TIES.



LOCATION
(INDICATE CORNER BY "X")

SEAL:



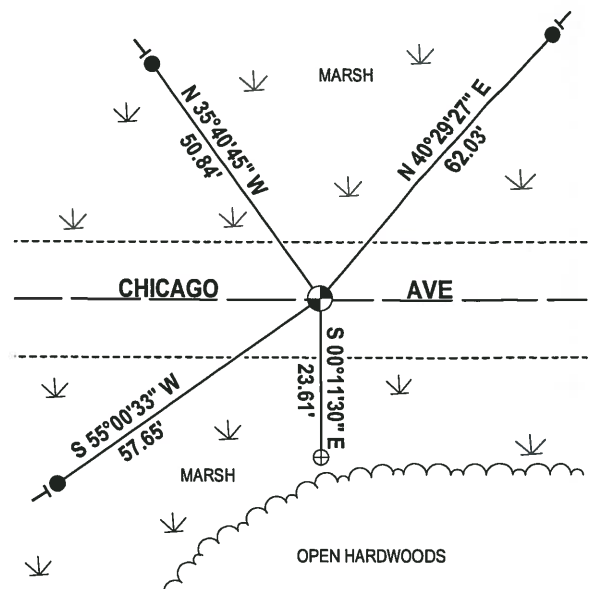
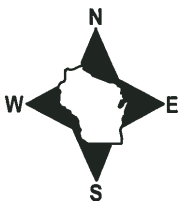
DATA SHOWN HERE ON THIS TIE SHEET IS CORRECT AND COMPLETE TO THE BEST OF MY KNOWLEDGE AND BELIEF.

PROFESSIONAL LAND SURVEYOR

DATE 3-1-18

- TIE SKETCH

NOTE: THE 1-1/4" WELL POINT IS ON THE NORTH EDGE OF A 10" WOODEN POST.



- 3/4" x 18" IRON REBAR SET, 1.50#/FT
- ⊕ 1-1/4" WELL POINT FOUND
- ⊙ HARRISON (BROKEN-TOP) FOUND
- VINYL "T" POST

ADAMS COUNTY

Survey Monument Record

TYPE OF MONUMENT: HARRISON STD.

STATE PLANE COORDINATES: N _____
E _____

ELEVATION — M.S.L. DATUM: _____

THETA ANGLE: _____

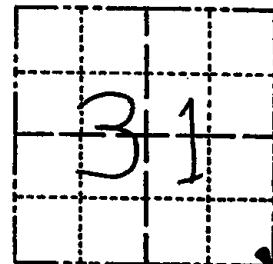
FIELD BOOK: 54 PAGE 29

CORNER NO. 123

SECTION 31

TOWN 19

RANGE 7



LOCATION
(Indicated by 'X')

SEAL:

BASIS FOR MONUMENT LOCATION

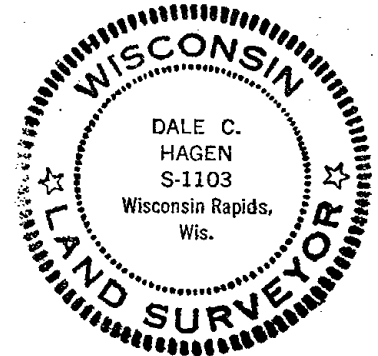
(Use reverse side if necessary)

Show info such as: History of corner, with reference to Vol. and pg, dates, surveyor; exact description of monument replaced; if location computed, by taped or EDM traverse; landowner remarks, etc.

Ran EDM/T2 traverse around Section 31 and many adjacent sections to determine search area for investigation.

Excavation with backhoe by Anthony B. Kiedrowski, Adams County Surveyor, yielded remains of wood post with pottery around it.

Remonumented post with Harrison monument on 9-2-77.



3-17-82	COR. OK	GR-SS
2-9-87	OK	GR
1-8-92	OK	KZ-JG
3-18-97	OK	JG-SS
1-30-02	2-NEW TIES	JG
10-11-07	OK	- JG

CERTIFIED CORRECT:

Dale C. Hagen
Registered Land Surveyor
DATE: 11-2-77

TIE SKETCH

(Show at least four ties)

NOTE

Ties in trees to nail in disc.

