

32 SECTION 19 TOWN 07 RANGE

ADAMS COUNTY

COUNTY CORNER NO: 124
ROMPORTOL ID: 41907320020

PUBLIC LAND SURVEY MONUMENT RECORD

TYPE OF MONUMENT: HARRISON (BROKEN-TOP)
ADAMS COUNTY COORDINATES, NAD 83 (2007)

N. 255986.268
E. 564828.925

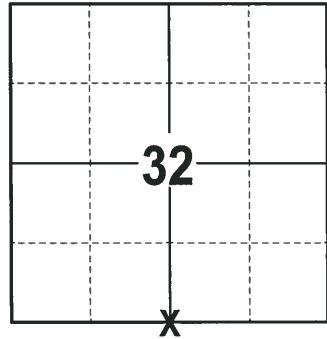
ELEVATION- _____ DATUM _____

FIELD WORK DATE: 01/30/2018

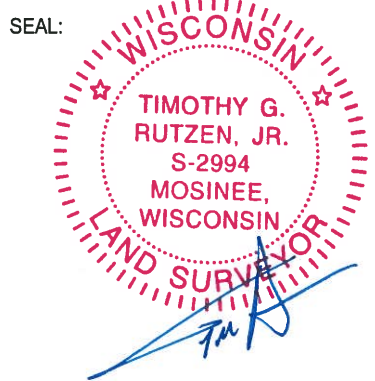
BASIS FOR MONUMENT LOCATION

1977 - PLS 1103 RAN EDM/TRANSIT TRAVERSE ALONG THE TOWN LINE FROM THE SW CORNER OF SECTION 31 TO THE SE CORNER OF SECTION 35 TO DETERMINE THE SEARCH AREAS FOR INVESTIGATION. EXCAVATION WITH A BACKHOE YIELDED NO EVIDENCE OF THE ORIGINAL CORNER OR ANY SUBSEQUENT REMONUMENTATION. COULD NOT FIND ANY EVIDENCE OF THE ORIGINAL BEARING TREES. CALCULATED THE CORNER BY SINGLE PROPORTIONATE MEASUREMENT ON A LINE BETWEEN ADJACENT SECTION CORNERS. SET A HARRISON MONUMENT AND TIED OUT.

2018 - PLS 2994 FOUND A HARRISON MONUMENT WITH A BROKEN-TOP 6" BELOW THE ROAD SURFACE AND 2 TIES. THE MONUMENT AGREES WITH 1 OF THE EXISTING TIES, THE NORTH TIE APPEARS TO BE DISTURBED DUE TO DITCHING. ACCEPTED THE HARRISON MONUMENT WITH A BROKEN-TOP AS THE CORNER LOCATION. SET 2 NEW TIES AND MEASURED TO THE TIES.



LOCATION
(INDICATE CORNER BY "X")



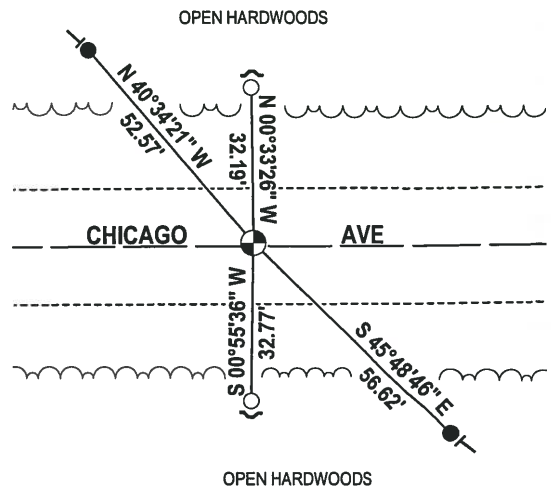
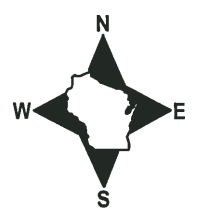
DATA SHOWN HERE ON THIS TIE SHEET IS CORRECT AND COMPLETE TO THE BEST OF MY KNOWLEDGE AND BELIEF.

PROFESSIONAL LAND SURVEYOR

DATE 3-1-18

- TIE SKETCH

NOTE: THE CORNER FALLS 1± NORTH OF THE CENTERLINE OF CHICAGO AVE.



- 3/4" x 18" IRON REBAR SET, 1.50#/FT
- 3/4" IRON ROD FOUND
- ⊕ HARRISON (BROKEN-TOP) FOUND
- ↙ STEEL FENCE POST
- VINYL "T" POST

ADAMS COUNTY

Survey Monument Record

TYPE OF MONUMENT: HARRISON STD.

STATE PLANE COORDINATES: N _____

E _____

ELEVATION — M.S.L. DATUM: _____

THETA ANGLE: _____

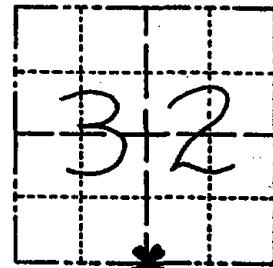
FIELD BOOK: 54 PAGE 31

CORNER NO. 124

SECTION 32

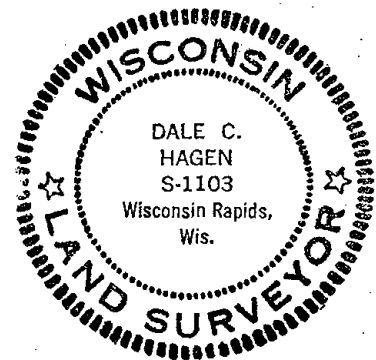
TOWN 29

RANGE 7



LOCATION
(Indicated by 'X')

SEAL:



BASIS FOR MONUMENT LOCATION

(Use reverse side if necessary)

Show info such as: History of corner, with reference to Vol. and pg, dates, surveyor; exact description of monument replaced; if location computed, by taped or EDM traverse; landowner remarks, etc.

Ran EDM/T2 traverse along Town line from SW of 31 to SE of 35 to determine search areas for investigation.

Excavation with backhoe yielded no evidence of the original corner, or any subsequent remonumentation. Could find no evidence of original bearing trees.

Relocated corner by single proportionate measure on line between adjacent section corners.

Set monument on 9-2-77.

3-18-82	COR. OK	GR-SS
1-8-92	OK	KZ-JG
3-18-97	1-GENE, 1-NEW	JG-SS
1-30-02	OK	JG
10-11-07	- JG - OK	

CERTIFIED CORRECT:

Dale C. Hagen
Registered Land Surveyor

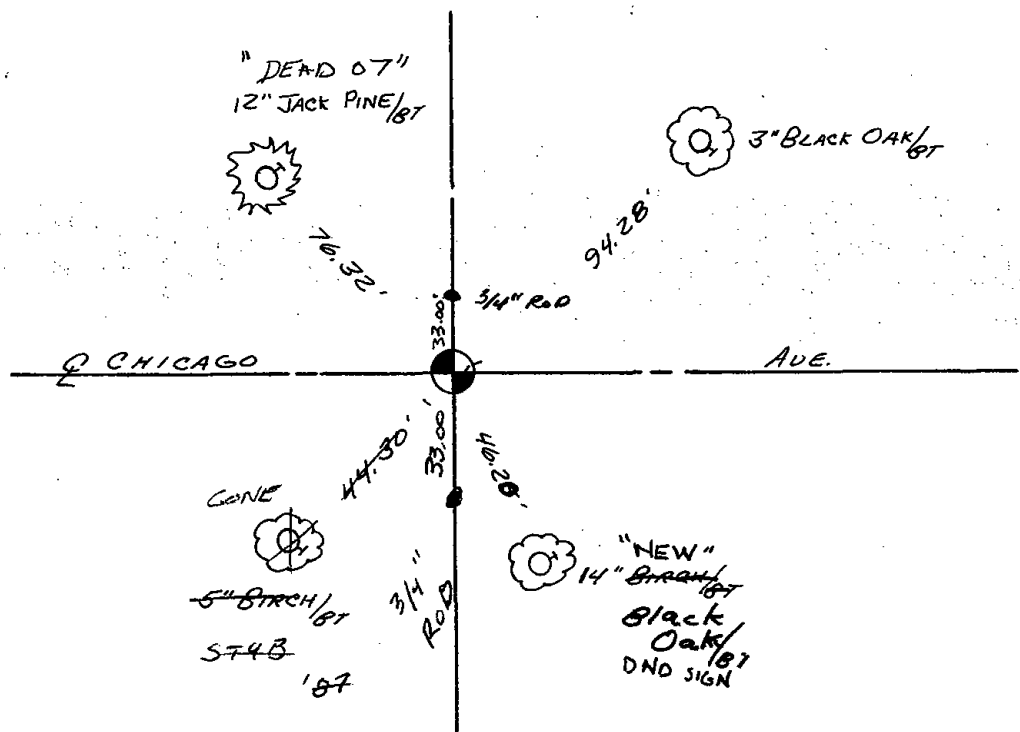
DATE: December 27, 1977

TIE SKETCH

(Show at least four ties)

NOTE

Ties in trees to nail in disc.



ADAMS COUNTY

Survey Monument Record

TYPE OF MONUMENT: HARRISON STD.

STATE PLANE COORDINATES: N. _____

E. _____

ELEVATION — M.S.L. DATUM: _____

THETA ANGLE: _____

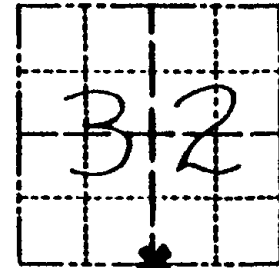
FIELD BOOK: 54 PAGE 31

CORNER NO. 124

SECTION 32

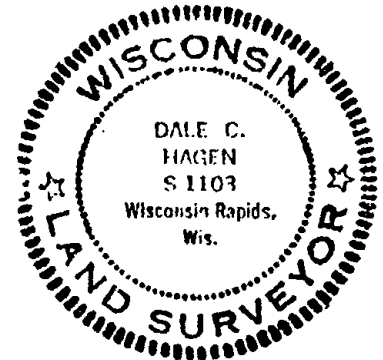
TOWN 29

RANGE 7



LOCATION
(Indicated by 'X')

SEAL:



BASIS FOR MONUMENT LOCATION

(Use reverse side if necessary)

Show info such as: History of corner, with reference to Vol. and pg. dates, surveyor; exact description of monument replaced; if location computed, by taped or EDM traverse; landowner remarks, etc.

Ran EDM/T2 traverse along Town line from SW of 31 to SE of 35 to determine search areas for investigation.

Excavation with backhoe yielded no evidence of the original corner, or any subsequent remonumentation. Could find no evidence of original bearing trees.

Relocated corner by single proportionate measure on line between adjacent section corners.

Set monument on 9-2-77.

2-18-82 COR. OK GR-SS
1-8-92 OK KZ-JG
~~04-18-94~~ ✓ Ken Carlson

CERTIFIED CORRECT

Registered Land Surveyor

DATE: December 27, 1977

Dale C. Hagen
Registered Land Surveyor
DATE: December 27, 1977

TIE SKETCH

(Show at least four ties)

NOTE

Ties in trees to nail in disc.

