

32
SECTION

19
TOWN

07
RANGE

ADAMS COUNTY

COUNTY CORNER NO: 125

ROMPORTOL ID: 41907320000

PUBLIC LAND SURVEY MONUMENT RECORD

TYPE OF MONUMENT: HARRISON (BROKEN-TOP)
ADAMS COUNTY COORDINATES, NAD 83 (2007)

N. 255992.960

E. 567479.071

ELEVATION- _____ DATUM _____

FIELD WORK DATE: 01/30/2018

BASIS FOR MONUMENT LOCATION

1978 - PLS 878 AFTER EDM TRAVERSE, DUG WITH A BACKHOE AND FOUND AN EXISTING WOOD POST WITH POTTERY AROUND IT. THE POST WAS ACCEPTED AS THE CORNER. RE-MONUMENTED WITH A HARRISON AND TIED OUT.

2018 - PLS 2994 FOUND A HARRISON MONUMENT WITH A BROKEN-TOP 12" BELOW THE ROAD SURFACE AND 1 WITNESS. THE MONUMENT AGREES WITH THE EXISTING WITNESS. ACCEPTED THE HARRISON MONUMENT WITH A BROKEN-TOP AS THE CORNER LOCATION. SET 4 NEW TIES AND MEASURED TO THE TIES AND WITNESS.



LOCATION
(INDICATE CORNER BY "X")

SEAL:



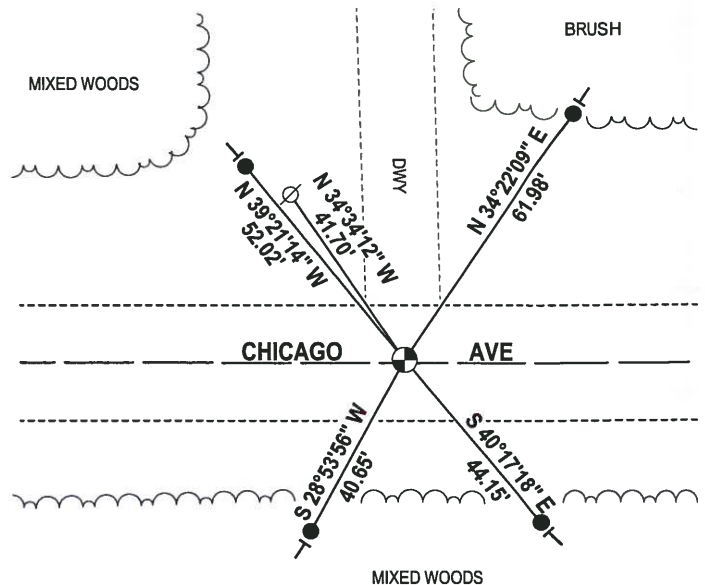
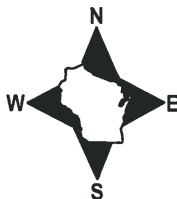
DATA SHOWN HERE ON THIS TIE SHEET IS CORRECT AND COMPLETE TO THE BEST OF MY KNOWLEDGE AND BELIEF.

PROFESSIONAL LAND SURVEYOR

DATE 3-1-18

- TIE SKETCH

NOTE: THE CORNER FALLS 0.5± NORTH OF THE CENTERLINE OF CHICAGO AVE.

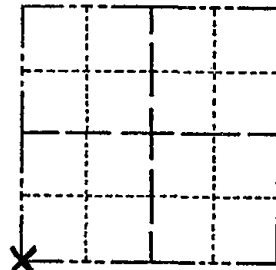


- 3/4" x 18" IRON REBAR SET, 1.50#/FT
- ⊕ HARRISON (BROKEN-TOP) FOUND
- ∅ WITNESS POWER POLE FOUND
- VINYL "T" POST

Government Land Corner Certificate

ADAMS County
 TYPE OF MONUMENT: HARRISON
 STATE PLANE COORDINATES: N _____
 E _____
 ELEVATION — M.S.L. DATUM: _____
 THETA ANGLE: _____
 FIELD BOOK: 57 PAGE 17
 DRAWN BY: LANCE HABECK

CORNER NO. 125
 SECTION 33
 TOWN 19N
 RANGE 7E



LOCATION
(Indicated by 'X')

BASIS FOR MONUMENT LOCATION

Show info such as: History of corner, with reference to Vol. and pg., dates, surveyor; exact description of monument replaced; if location computed, by taped or EDM traverse; landowner remarks, etc. (Use reverse side if necessary)

ABK dug with backhoe and found existing wood post
 The post WAS ACCEPTED AS THE CORNER AND MONUMENTED,
 after EDM traverse.
 Pottery found around post.

3-17-82 TOP BROKEN GR-SS TIES O.K.

SEAL:



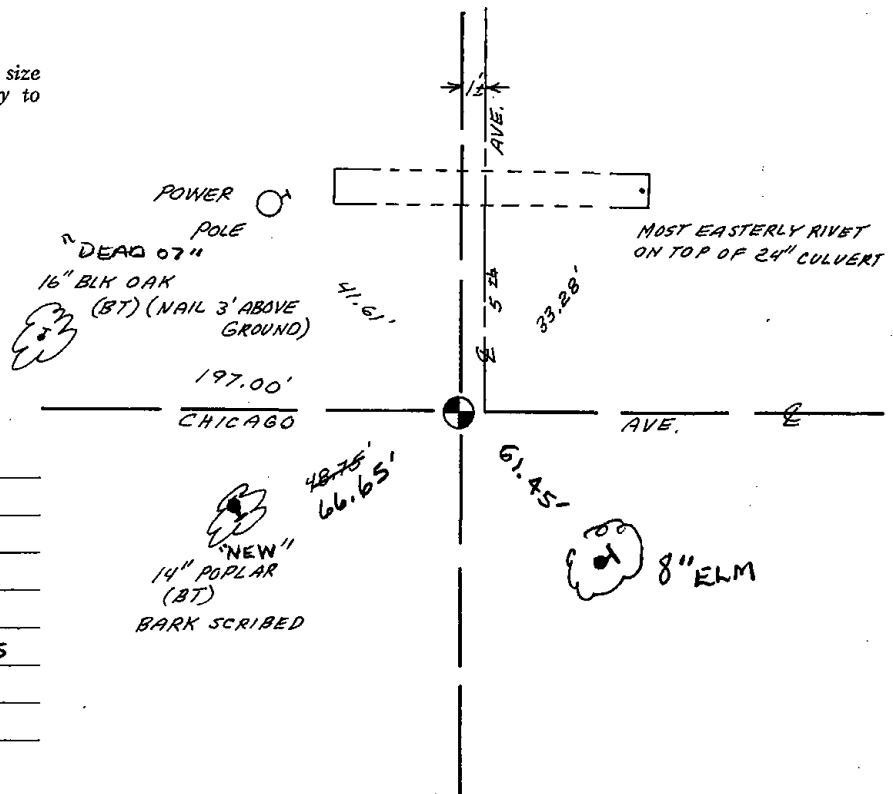
DATA SHOWN HERE ON
 CERTIFIED CORRECT:

Anthony B. Kiedrowski
 Registered Land Surveyor

DATE: 9/6/78

TIE SKETCH

Show at least four ties, also fence lines, roads, topo, size and type of witness trees' and if off road - best way to arrive at corner.



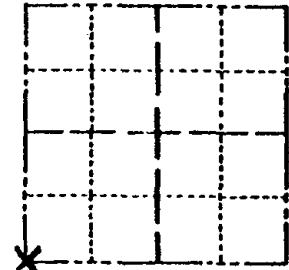
MAINTENANCE RECORD

Date	Init.	Remarks
2-9-87	GR-SS	OK
1-8-92	KZ-JG	OK
3-18-97	JG-SS	OK
1-30-02	JG	1-LONE, 2-NEW TIES
10-11-07	JG	OK

Government Land Corner Certificate

ADAMS County
 TYPE OF MONUMENT: HARRISON
 STATE PLANE COORDINATES: N _____
 E _____
 ELEVATION — M.S.L. DATUM: _____
 THETA ANGLE: _____
 FIELD BOOK: 57 PAGE 17
 DRAWN BY: LANCE HARECK

CORNER NO. 125
 SECTION 33
 TOWN 19N
 RANGE 7E



LOCATION
(Indicated by 'X')

BASIS FOR MONUMENT LOCATION

Show info such as: History of corner, with reference to Vol. and pg., dates, surveyor; exact description of monument replaced; if location computed, by taped or EDM traverse; landowner remarks, etc. (Use reverse side if necessary)

ABK dug with backhoe and found existing wood post
 The post WAS ACCEPTED AS THE CORNER AND MONUMENTED,
 after EDM traverse.
 Pattery found wood post.

3-17-82 TOP BROKEN GR-SS
 TIES O.K.

SEAL:



DATA SHOWN HERE ON
 CERTIFIED CORRECT:

Anthony B. Kiedrowski
 Registered Land Surveyor

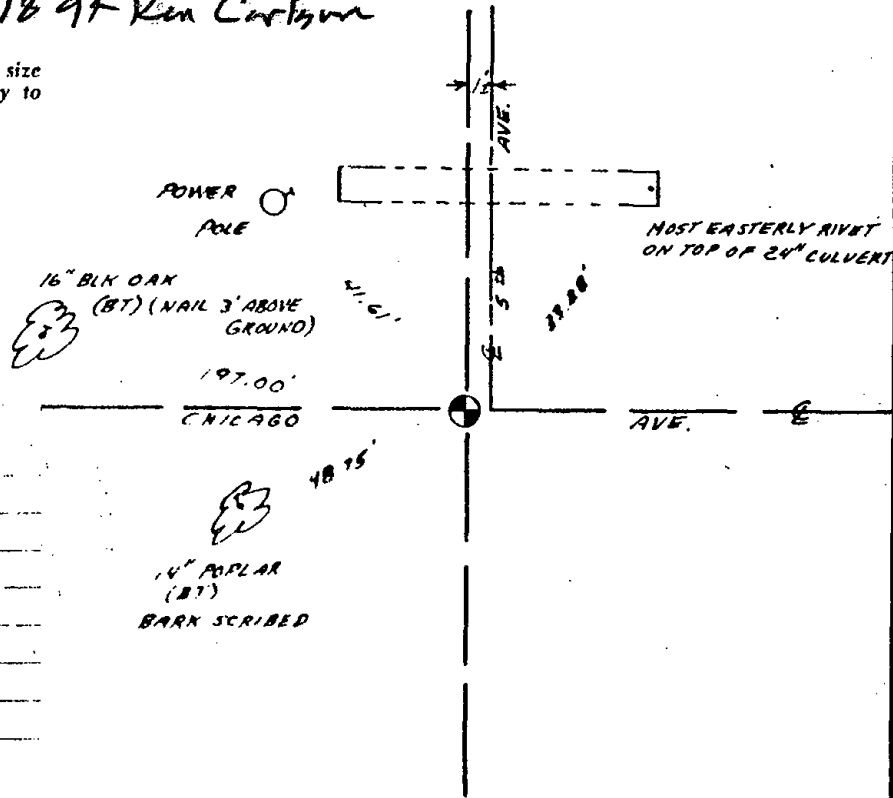
DATE: 9/6/28

Top broken off - Bot. OK

TIE SKETCH

Ties OK Oct 18' at Ken Carlson

Show at least four ties, also fence lines, roads, topo, size and type of witness trees and if off road - best way to arrive at corner.



MAINTENANCE RECORD

Date	Init.	Remarks
2-9-87	GR-SS	OK
1-8-92	KZ-JG	OK