

34
SECTION

19
TOWN

07
RANGE

ADAMS COUNTY

COUNTY CORNER NO: 128

ROMPORTOL ID: 41907340020

PUBLIC LAND SURVEY MONUMENT RECORD

TYPE OF MONUMENT: HARRISON (BROKEN-TOP)
ADAMS COUNTY COORDINATES, NAD 83 (2007)

N. 256028.022

E. 575416.721

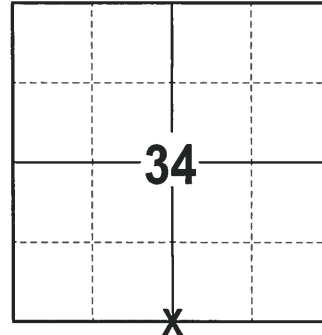
ELEVATION- DATUM

FIELD WORK DATE: 01/31/2018

BASIS FOR MONUMENT LOCATION

1977 - PLS 878 EXCAVATED WITH A BACKHOE AND FOUND LOGS BURIED IN THE ROAD. COULD NOT DIG ANY FURTHER. NO RESURVEYS WERE ON RECORD. CALCULATED A POINT ON LINE AND EQUIDISTANT BETWEEN THE SECTION CORNERS. SET THE TOP 20" OF A HARRISON MONUMENT ON TOP OF LOG AND TIED OUT.

2018 - PLS 2994 FOUND A HARRISON MONUMENT WITH A BROKEN-TOP 2" BELOW THE ROAD SURFACE, 1 TIE AND 1 WITNESS. THE MONUMENT AGREES WITH THE EXISTING TIE AND WITNESS. ACCEPTED THE HARRISON MONUMENT WITH A BROKEN-TOP AS THE CORNER LOCATION. SET 3 NEW TIES AND MEASURED TO THE TIES AND WITNESS.



LOCATION
(INDICATE CORNER BY "X")

SEAL:



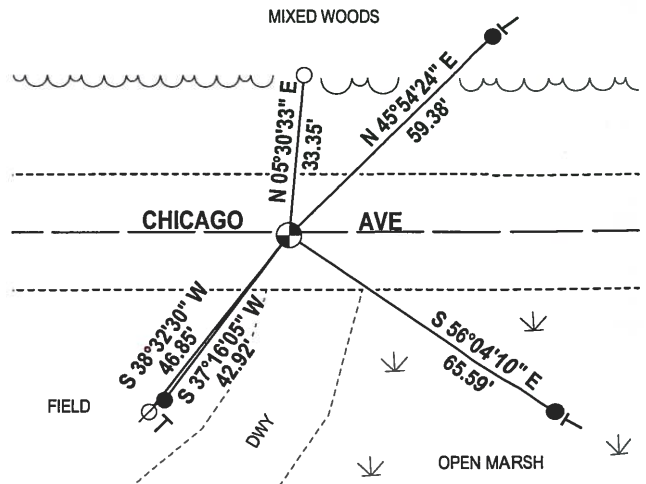
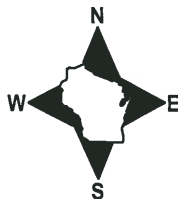
DATA SHOWN HERE ON THIS TIE SHEET IS CORRECT AND COMPLETE TO THE BEST OF MY KNOWLEDGE AND BELIEF.

PROFESSIONAL LAND SURVEYOR

DATE 3-1-18

- TIE SKETCH

NOTE: THE CORNER FALLS 1± SOUTH OF THE CENTERLINE OF CHICAGO AVE.



- 3/4" x 18" IRON REBAR SET, 1.50#/FT
- 3/4" IRON ROD FOUND
- ⊕ HARRISON (BROKEN-TOP) FOUND
- ∅ WITNESS POWER POLE FOUND
- VINYL "T" POST

ADAMS COUNTY

Survey Monument Record

TYPE OF MONUMENT: Harrison

STATE PLANE COORDINATES: N _____
E _____

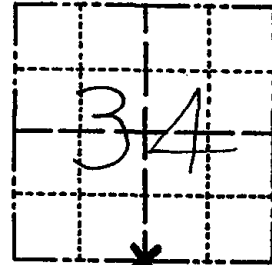
ELEVATION — M.S.L. DATUM: _____

THETA ANGLE: _____

FIELD BOOK: 54 PAGE 12

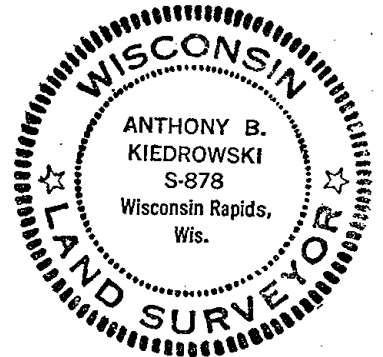
(101) (90)

CORNER NO. 128
SECTION 34
TOWN 19
RANGE 7



LOCATION
(Indicated by 'X')

SEAL:



BASIS FOR MONUMENT LOCATION

(Use reverse side if necessary)

Show info such as: History of corner, with reference to Vol. and pg. dates, surveyor; exact description of monument replaced; if location computed, by taped or EDM traverse; landowner remarks, etc.

Excavated with backhoe. Found logs buried in road. Could not dig further. No resurveys on record. Set top 20" of Harrison monument on top of log. Point is on line equidistant between section corners.

3-17-82 Fd. 1" Iron Pipe @ Cor. GR.-S.S.
NOT MAR. TIES O.K.
2-9-87 OK GR
1-8-92 OK KZ-JG
3-18-97 OK JG-SS
1-30-02 1-GONE 1-NEW TIE, JG
1-NEW. TOP BROKEN OFF MAN, 10-11-07 - JG

CERTIFIED CORRECT:

Anthony B. Kiedrowski
Registered Land Surveyor

DATE: 6/28/77

TIE SKETCH

(Show at least four ties)

Ties are to nail and bottle cap.

