

PUBLIC LAND SURVEY MONUMENT RECORD

TYPE OF MONUMENT: HARRISON
 ADAMS COUNTY COORDINATES, NAD 83 (2007)

N. 321812.720

E. 520222.211

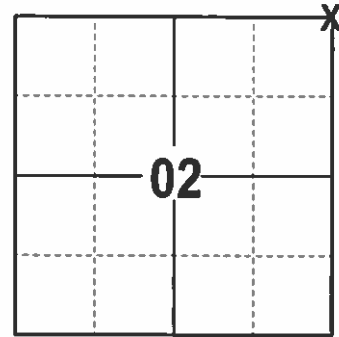
ELEVATION- DATUM

FIELD WORK DATE: 12/28/2016

BASIS FOR MONUMENT LOCATION

1981 - PLS 878 REPLACED A 2" X 30" IRON PIPE WITH A HARRISON WHICH WAS SET PER CSM NO. 77 IN JANUARY 1970 WHICH THE LOCATION WAS ESTABLISHED BY RUNNING A LINE FOR THE 160 ACRE CORNER THROUGH A STONE FOUND AT THE FORTY CORNER TO THE SOUTH AND INTERSECTING TO THE WOOD COUNTY LINE.

2017 - PLS 2994 FOUND EXISTING HARRISON LEVEL WITH THE GROUND, 3 WITNESS TREES AND A FENCE POST USED AS A WITNESS. THE HARRISON AGREES WITH EXISTING WITNESSES. ACCEPTED HARRISON AND SET 4 NEW TIES.



LOCATION
 (INDICATE CORNER BY "X")

SEAL:

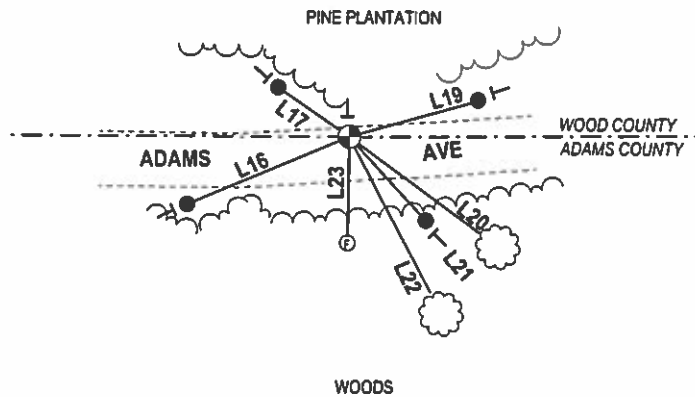
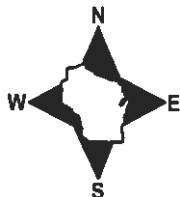


DATA SHOWN HERE ON THIS TIE SHEET IS CORRECT AND COMPLETE TO THE BEST OF MY KNOWLEDGE AND BELIEF.

PROFESSIONAL LAND SURVEYOR

DATE 2/9/17

- TIE SKETCH



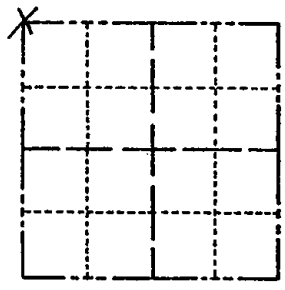
- 3/4" x 18" IRON REBAR SET, 1.50#/FT
- ⊙ FOUND FENCE POST
- ⊙ HARRISON FOUND
- ⊙ VINYL "T" POST
- ☁ WITNESS TREE FOUND

LINE	BEARING	DISTANCE
L16	S 67°28'43" W	45.89'
L17	N 55°31'35" W	22.57'
L19	N 74°00'18" E	34.84'
L20	S 53°44' E	48.5'±
L21	S 42°38'04" E	29.47'
L22	S 27°43' E	52'±
L23	S 00°58' W	27.5'±

Government Land Corner Certificate

ADAMS County
 TYPE OF MONUMENT: HARRISON
 STATE PLANE COORDINATES: N _____
 E _____
 ELEVATION — M.S.L. DATUM: _____
 THETA ANGLE: _____
 FIELD BOOK: 69 PAGE 117
 DRAWN BY: L.C.

CORNER NO. 11
 SECTION 1
 TOWN 20
 RANGE 5



LOCATION
(Indicated by 'X')

SEAL:



DATA SHOWN HERE ON
CERTIFIED CORRECT:

Anthony B. Kiedrowski
Registered Land Surveyor

DATE: 5/17/81

BASIS FOR MONUMENT LOCATION

Show info such as: History of corner, with reference to Vol. and pg., dates, surveyor; exact description of monument replaced; if location computed, by taped or EDM traverse; landowner remarks, etc. (Use reverse side if necessary)

Replaced 2" x 30" iron pipe set as the section corner in CSM No. 77, in Jan., 1970.
 Location established by running a line from the 160 acre corner, through a stone found at the forty corner south of here, and intersecting that line with the Wood County Line.

- 1- GONE, 1- NEW TIE 3-4-94 JG-SS
- 1- GONE, 2- NEW TIES 3-1-99 - JG-SS
TOP BROKEN OFF
- 1 NEW TIE 2-30-09 SS
OK 3-5-09 SS

TIE SKETCH

Show at least four ties, also fence lines, roads, topo, size and type of witness trees' and if off road - best way to arrive at corner.

