

PUBLIC LAND SURVEY MONUMENT RECORD

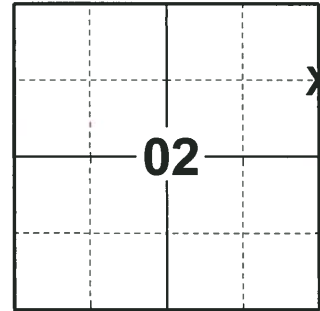
TYPE OF MONUMENT: HARRISON (BROKEN-TOP)
ADAMS COUNTY COORDINATES, NAD 83 (2007)

N. 319261.880

E. 520224.117

ELEVATION- - - - - DATUM - - - - -

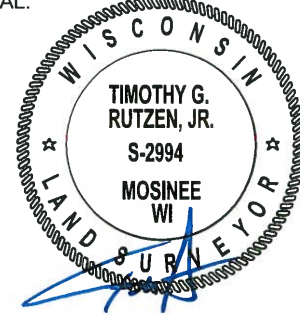
FIELD WORK DATE: 05/31/2018



LOCATION

(INDICATE CORNER BY "X")

SEAL:



DATA SHOWN HERE ON THIS TIE SHEET IS CORRECT AND COMPLETE TO THE BEST OF MY KNOWLEDGE AND BELIEF.

PROFESSIONAL LAND SURVEYOR

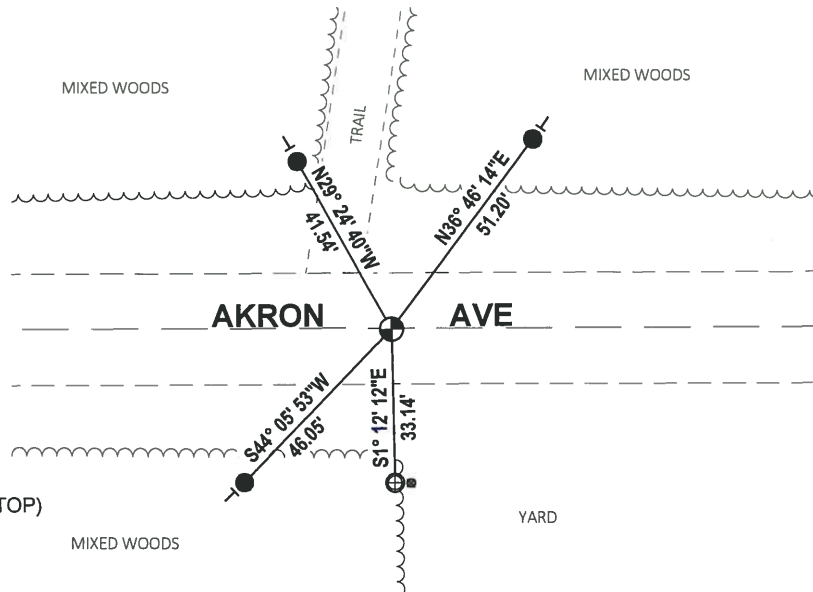
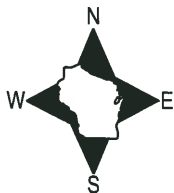
DATE 7-18-18

BASIS FOR MONUMENT LOCATION

1974 - PLS 878 MONUMENTED POINT SET BY KIEDROWSKI FOR THE TUTTLE SURVEY WITH A HARRISON AND TIED OUT. SECTION WAS TRAVERSED. THE POINT FITS WELL.

2018 - PLS 2994 FOUND A HARRISON MONUMENT WITH A BROKEN-TOP 20" BELOW THE ROAD SURFACE AND 1 TIE. THE MONUMENT AGREES WITH THE EXISTING TIE. ACCEPTED THE HARRISON MONUMENT WITH A BROKEN-TOP AS THE CORNER LOCATION. SET 3 NEW TIES AND MEASURED TO THE TIES.

TIE SKETCH



- SET 3/4" x 18" IRON REBAR, 1.50#/FT
- ⊕ FOUND 1" O.D. IRON PIPE
- ⊕ FOUND HARRISON MONUMENT (BROKEN-TOP)
- 4" WOODEN POST
- ⊥ VINYL "T" POST