

## PUBLIC LAND SURVEY MONUMENT RECORD

TYPE OF MONUMENT: HARRISON  
 ADAMS COUNTY COORDINATES, NAD 83 (2007)

N. 313995.241

E. 514939.286

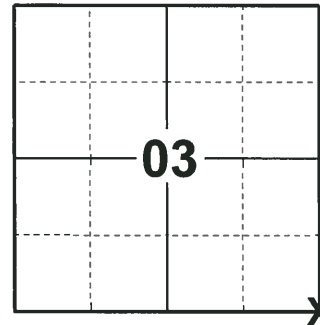
ELEVATION-      -      -      DATUM      -      -     

FIELD WORK DATE: 06/04/2018

### BASIS FOR MONUMENT LOCATION

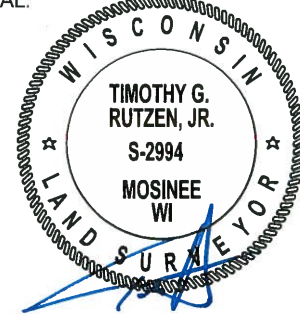
1982- PLS 1167 SEARCHED AREA FOR EVIDENCE OF RE MONUMENTED CORNER. SEARCHED FAILED TO PRODUCE SAID NEEDED EVIDENCE. SET HARRISON BY DOUBLED OVER DISTANCE ON A STRAIGHT LINE FROM SOUTH 1/4 CORNER AND SE CORNER AND TIED OUT CORNER.

2018- PLS 2994 FOUND A HARRISON MONUMENT FLUSH WITH THE GROUND SURFACE AND 3 WITNESS TREES. THE MONUMENT AGREES WITH THE EXISTING WITNESS TREES. ACCEPTED THE HARRISON MONUMENT AS THE CORNER LOCATION. SET 4 NEW TIES AND MEASURED TO THE TIES AND EXISTING WITNESS TREES.



**LOCATION**  
 (INDICATE CORNER BY "X")

SEAL:

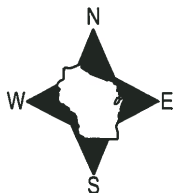


DATA SHOWN HERE ON THIS TIE SHEET IS CORRECT AND COMPLETE TO THE BEST OF MY KNOWLEDGE AND BELIEF.

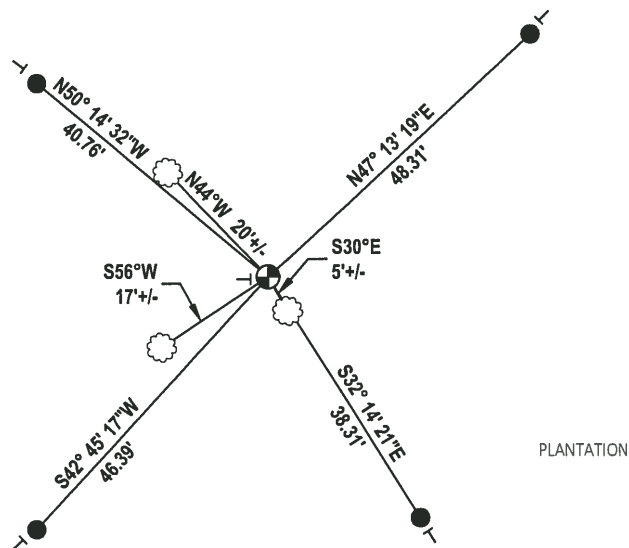
PROFESSIONAL LAND SURVEYOR

DATE 7-15-18

### TIE SKETCH



PINE



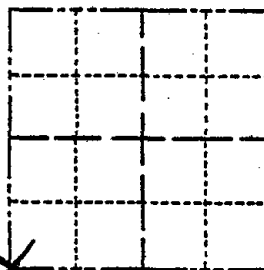
PLANTATION

- SET 3/4" x 18" IRON REBAR, 1.50#/FT
- ⊕ FOUND HARRISON MONUMENT
- └ VINYL "T" POST
- ☁ WITNESS TREE

# Government Land Corner Certificate

ADAMS County  
 TYPE OF MONUMENT: Harrison  
 STATE PLANE COORDINATES: N \_\_\_\_\_  
 E \_\_\_\_\_  
 ELEVATION — M.S.L. DATUM: \_\_\_\_\_  
 THETA ANGLE: \_\_\_\_\_  
 FIELD BOOK: \_\_\_\_\_ PAGE \_\_\_\_\_  
 DRAWN BY: R. NUBER

CORNER NO. 29  
 SECTION 2  
 TOWN 20  
 RANGE 5

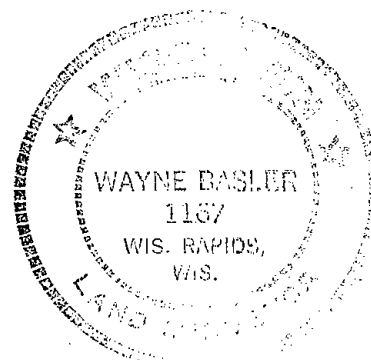


LOCATION  
(Indicated by 'X')

## BASIS FOR MONUMENT LOCATION

Show info such as: History of corner, with reference to Vol. and pg., dates, surveyor; exact description of monument replaced; if location computed, by taped or EDM traverse; landowner remarks, etc. (Use reverse side if necessary)

SEAL:



Searched area for evidence of remonumented corner. Search failed to produce said needed evidence.

Set corner by doubling over distance on a straight line from S $\frac{1}{4}$  Cor. & SE Cor. 2-20-5E

Ok-3-20-84 GR-SS

1- NEW TIE 3-4-94, JG-SS

OK 2-16-99 - JG-SS

OK 3-5-09 SS ADD SIGNS

DATA SHOWN HERE ON  
CERTIFIED CORRECT:

*Wayne Basler*  
Registered Land Surveyor

DATE: 1-7-82

## TIE SKETCH

Show at least four ties, also fence lines, roads, topo, size and type of witness trees and if off road - best way to arrive at corner.

