

PUBLIC LAND SURVEY MONUMENT RECORD

TYPE OF MONUMENT: HARRISON
 ADAMS COUNTY COORDINATES, NAD 83 (2007)

N. 313988.817

E. 517604.372

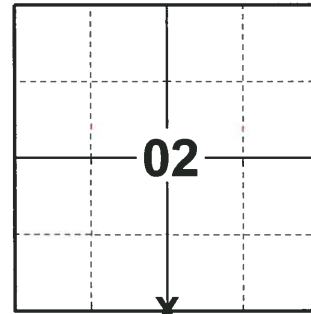
ELEVATION- DATUM

FIELD WORK DATE: 06/04/2018

BASIS FOR MONUMENT LOCATION

1973- PLS 878 SET HARRISON MONUMENT AT LOCATION OF OLD FENCE INTERSECTION, AFTER VERIFYING IT BY TRAVERSE OF NORTH 1/2 OF SECTION AND TIED OUT THE CORNER

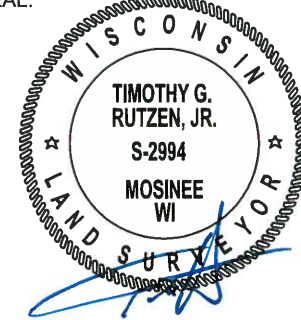
2018- PLS 2994 FOUND A HARRISON MONUMENT 12" ABOVE THE GROUND SURFACE (LEANING) AND 2 WITNESS TREES. STRAITENED UP THE EXISTING HARRISON. THE MONUMENT AGREES WITH THE EXISTING WITNESS TREES. ACCEPTED THE HARRISON MONUMENT AS THE CORNER LOCATION. SET 4 NEW TIES AND MEASURED TO THE TIES AND WITNESS TREES.



LOCATION

(INDICATE CORNER BY "X")

SEAL:

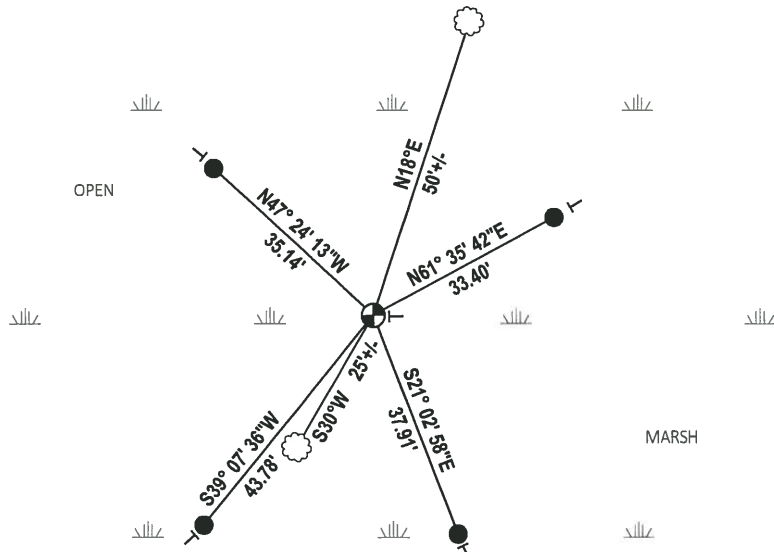
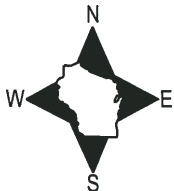


DATA SHOWN HERE ON THIS TIE SHEET IS CORRECT AND COMPLETE TO THE BEST OF MY KNOWLEDGE AND BELIEF.

PROFESSIONAL LAND SURVEYOR

DATE 7-18-18

TIE SKETCH



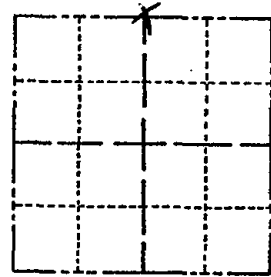
- SET 3/4" x 18" IRON REBAR, 1.50#/FT
- ⊕ FOUND HARRISON MONUMENT
- ┌ VINYL "T" POST
- ☼ WITNESS TREE

ADAMS COUNTY

Survey Monument Record

CORNER NO. 303
SECTION 11
TOWN 20
RANGE 5

TYPE OF MONUMENT: 30" HARRISON
STATE PLANE COORDINATES: N _____
E _____
ELEVATION — M.S.L. DATUM: _____
THETA ANGLE: _____
FIELD BOOK: 108 PAGE 91



LOCATION
(Indicated by 'X')

SEAL:



BASIS FOR MONUMENT LOCATION

(Use reverse side if necessary)

Show info such as: History of corner, with reference to Vol. and pg, dates, surveyor; exact description of monument replaced; if location computed, by taped or EDM traverse; landowner remarks, etc.

Set monument at location of old fence intersection, after verifying it by a traverse of $N\frac{1}{2}$ of section.

No other evidence of corner.

Ok- 3-20-84 GR-SS

CERTIFIED CORRECT:

Anthony B. Kiedrowski
Registered Land Surveyor
DATE: 9-18-73

OK 11-5-79 BS-SS
1 NEW 3-4-94 JG-SS
OK 2-16-99 JG-SS
2 NEW TIES 3-5-09 SS

TIE SKETCH

(Show at least four ties)

3 "JACK PINE STANDS ALONE IN MARSH '09
49.6 TO TOP/CENTER HARRISON FD. TIPPED ± 0.3
NORTHERLY - UNABLE TO STRAIGHTEN

