

## PUBLIC LAND SURVEY MONUMENT RECORD

TYPE OF MONUMENT: HARRISON (BROKEN-TOP)  
 ADAMS COUNTY COORDINATES, NAD 83 (2007)

N. 313982.293

E. 520269.088

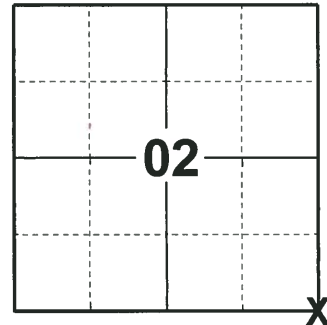
ELEVATION- \_\_\_\_\_ DATUM \_\_\_\_\_

FIELD WORK DATE: 05/29/2018

### BASIS FOR MONUMENT LOCATION

1979 - PLS 1167 DUG WITH A BACKHOE FOR EVIDENCE OF THE CORNER AND FOUND NOTHING. RAN TRAVERSE OF THE NE1/4 OF SECTION 11-20-5, THE SOUTH 1/2 OF 1-20-5 AND THE NORTH 1/2 OF 12-20-5. CALCULATED THE CORNER BY COMPARISON OF THE ORIGINAL DISTANCES FOR THE E-W LOCATION. DOUBLED THE DISTANCES NORTHERLY FROM THE W1/4 CORNER AND THE SW CORNER OF 12-20-5. SET HARRISON AND TIED OUT.

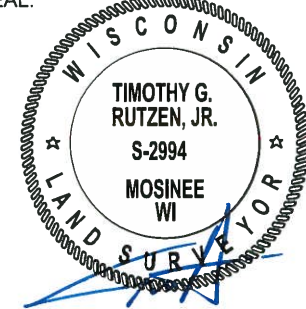
2018 - PLS 2994 FOUND A HARRISON MONUMENT WITH A BROKEN-TOP 12" BELOW THE ROAD SURFACE, 1 PROPERTY IRON (USED AS TIE) AND 1 WITNESS TREE. THE MONUMENT AGREES WITH THE EXISTING WITNESS. ACCEPTED THE HARRISON MONUMENT WITH A BROKEN-TOP AS THE CORNER LOCATION. SET 3 NEW TIES AND MEASURED TO THE TIES AND WITNESS TREE.



LOCATION

(INDICATE CORNER BY "X")

SEAL:



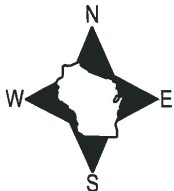
DATA SHOWN HERE ON THIS TIE SHEET IS CORRECT AND COMPLETE TO THE BEST OF MY KNOWLEDGE AND BELIEF.

PROFESSIONAL LAND SURVEYOR

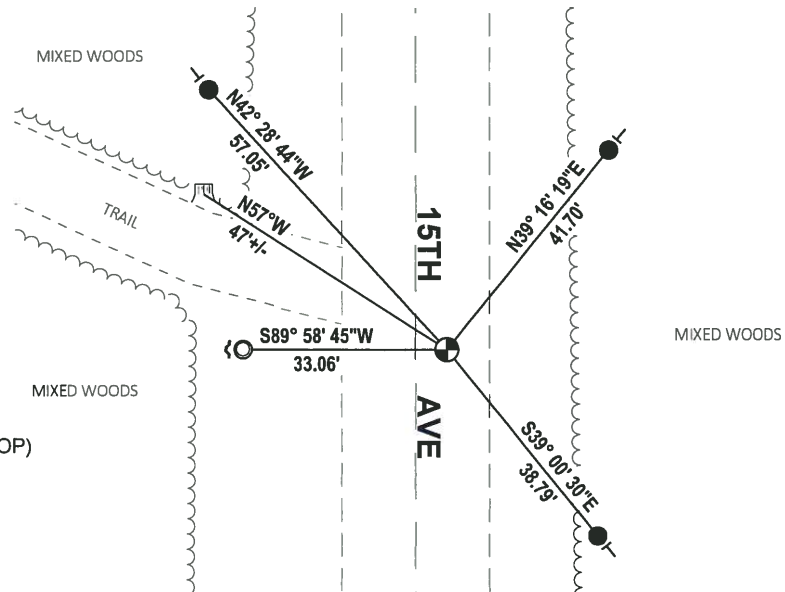
DATE 7-18-18

### TIE SKETCH

NOTE: THE CORNER FALLS 5± EAST OF THE CENTERLINE OF 15TH AVE.



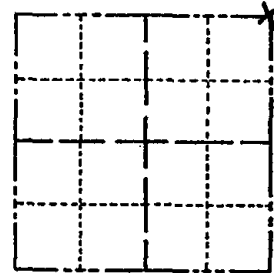
- SET 3/4" x 18" IRON REBAR, 1.50#/FT
- FOUND 1-1/4" O.D. IRON PIPE
- ⊕ FOUND HARRISON MONUMENT (BROKEN-TOP)
- ┘ STEEL FENCE POST
- └ VINYL "T" POST
- ⌘ WITNESS TREE STUMP



# Government Land Corner Certificate

ADAMS County  
 TYPE OF MONUMENT: HARRISONS  
 STATE PLANE COORDINATES: N \_\_\_\_\_  
 E \_\_\_\_\_  
 ELEVATION — M.S.L. DATUM: \_\_\_\_\_  
 THETA ANGLE: \_\_\_\_\_  
 FIELD BOOK: L.L. PAGE \_\_\_\_\_  
 DRAWN BY: M. MARZDFKA

CORNER NO. 31  
 SECTION 11  
 TOWN 20  
 RANGE 5



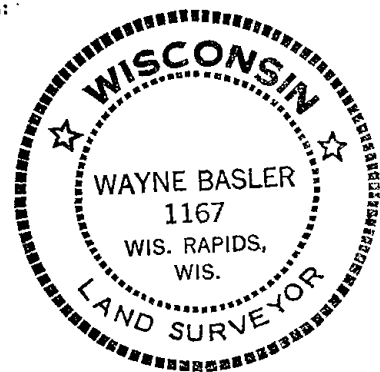
LOCATION  
(Indicated by 'X')

## BASIS FOR MONUMENT LOCATION

Show info such as: History of corner, with reference to Vol. and pg., dates, surveyor; exact description of monument replaced; if location computed, by taped or EDM traverse; landowner remarks, etc. (Use reverse side if necessary)

Dug with backhoe for evidence of a corner, found nothing. Ran traverse of the NE $\frac{1}{4}$  Section 11-20-5 and S $\frac{1}{2}$  1-20-5 and N $\frac{1}{2}$  12-20-5. Set corner by comparison of original distances for the E-W location. Doubled the distance northerly from the W $\frac{1}{4}$  Cor and SW Cor 12-20-5.

SEAL:



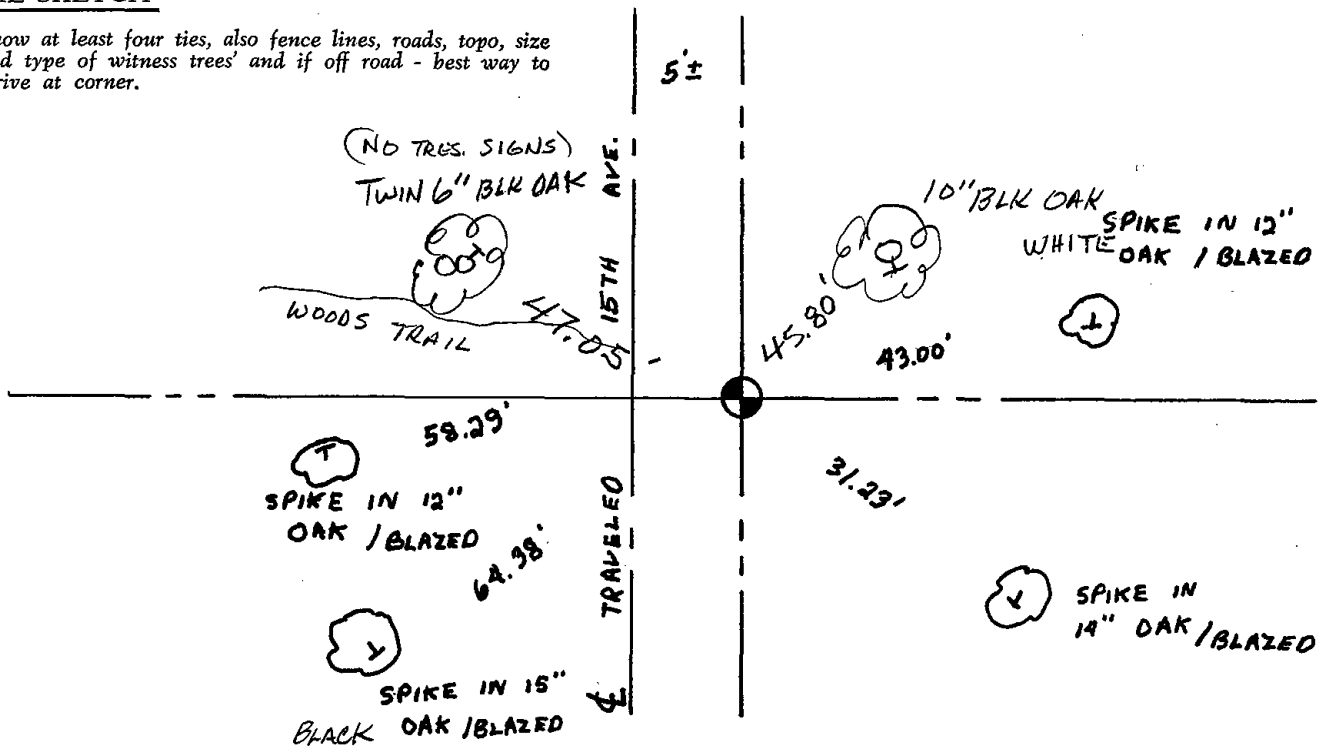
DATA SHOWN HERE ON  
CERTIFIED CORRECT:

Wayne Basler  
Registered Land Surveyor

DATE: July 16, 1979

## TIE SKETCH

Show at least four ties, also fence lines, roads, topo, size and type of witness trees' and if off road - best way to arrive at corner.



MAINTENANCE RECORD

DATE	BY WHOM	REMARKS
1-23-89	SS	OK
2-11-99	SS-CR	OK
2-16-99	JG-SS	2-GONE, 2-NEW TILES, TOP BROKEN OFF
2-26-04	JG	FOUND 2- OLD TIES, NAILS STILL GOOD
01-13-09	SS	OK

MON.