

## PUBLIC LAND SURVEY MONUMENT RECORD

TYPE OF MONUMENT: HARRISON  
ADAMS COUNTY COORDINATES, NAD 83 (2007)

N. 313954.605

E. 522902.877

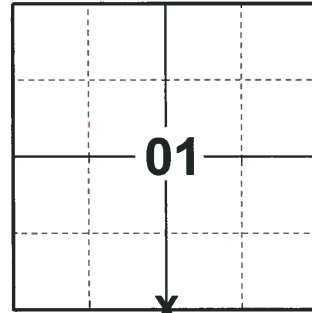
ELEVATION- - - - - DATUM - - - - -

FIELD WORK DATE: 05/31/2018

### BASIS FOR MONUMENT LOCATION

1979 - PLS 1167 SET A HARRISON MONUMENT ON A STRAIGHT LINE MIDWAY BETWEEN THE NW CORNER AND THE NE CORNER 12-20-5 AND TIED OUT.

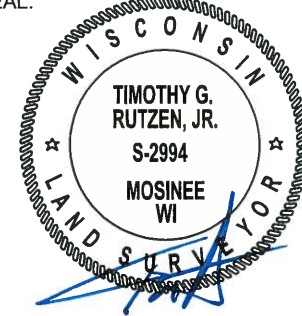
2018 - PLS 2994 FOUND A HARRISON MONUMENT 2" ABOVE THE GROUND SURFACE AND 1 WITNESS TREE. THE MONUMENT AGREES WITH THE EXISTING WITNESS TREE. ACCEPTED THE HARRISON MONUMENT AS THE CORNER LOCATION. SET 4 NEW TIES AND MEASURED TO THE TIES AND WITNESS TREE.



**LOCATION**

(INDICATE CORNER BY "X")

SEAL:

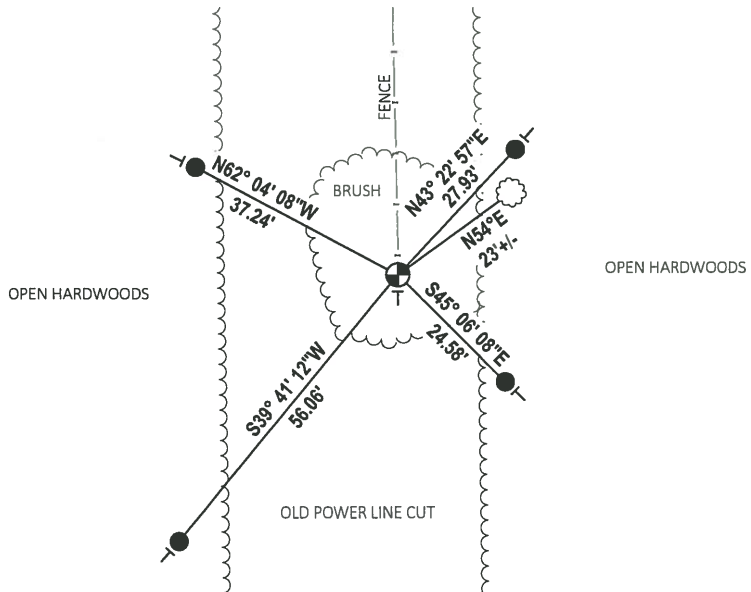
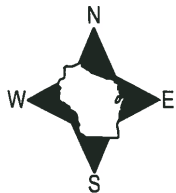


DATA SHOWN HERE ON THIS TIE SHEET IS CORRECT AND COMPLETE TO THE BEST OF MY KNOWLEDGE AND BELIEF.

PROFESSIONAL LAND SURVEYOR

DATE 7-18-18

### - TIE SKETCH

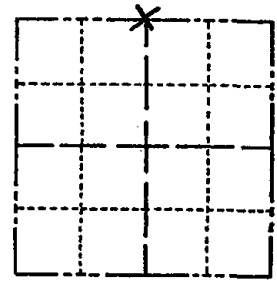


- SET 3/4" x 18" IRON REBAR, 1.50#/FT
- ⊕ FOUND HARRISON MONUMENT
- VINYL "T" POST
- ☁ WITNESS TREE

# Government Land Corner Certificate

ADAMS County  
 TYPE OF MONUMENT: HARRISON  
 STATE PLANE COORDINATES: N \_\_\_\_\_  
 E \_\_\_\_\_  
 ELEVATION — M.S.L. DATUM: \_\_\_\_\_  
 THETA ANGLE: \_\_\_\_\_  
 FIELD BOOK: L. L. PAGE \_\_\_\_\_  
 DRAWN BY: M. MARZOFKA

CORNER NO. 32  
 SECTION 12  
 TOWN 20  
 RANGE 5

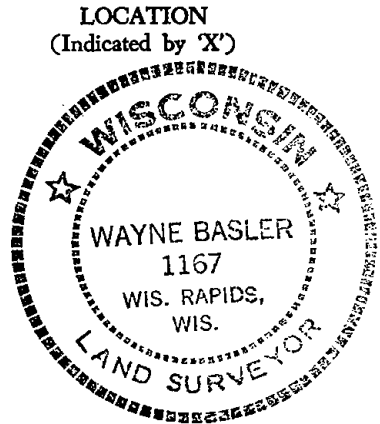


## BASIS FOR MONUMENT LOCATION

Show info such as: History of corner, with reference to Vol. and pg., dates, surveyor; exact description of monument replaced; if location computed, by taped or EDM traverse; landowner remarks, etc. (Use reverse side if necessary)

Set Harrison Monument on a straight line midway between the NW Cor and the NE Cor 12-20-5.

SEAL:



DATA SHOWN HERE ON CERTIFIED CORRECT:

*Wayne Basler*  
Registered Land Surveyor

DATE: July 14, 1979

## TIE SKETCH

Show at least four ties, also fence lines, roads, topo, size and type of witness trees' and if off road - best way to arrive at corner.

