

PUBLIC LAND SURVEY MONUMENT RECORD

TYPE OF MONUMENT: COTTON GIN SPINDLE
 ADAMS COUNTY COORDINATES, NAD 83 (2007)

N. 311340.845

E. 520238.613

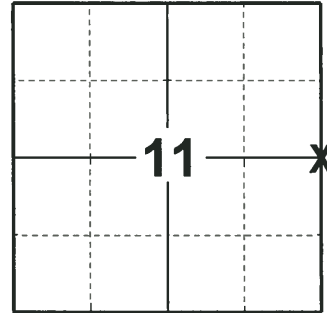
ELEVATION- - - - DATUM - - - -

FIELD WORK DATE: 06/04/2018

BASIS FOR MONUMENT LOCATION

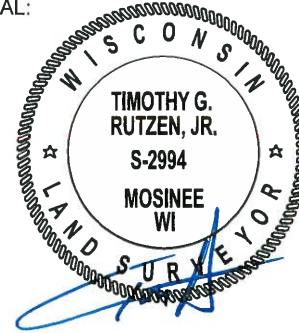
1973- PLS 878 REPLACED RAILROAD SPIKE FOUND AND BELIEVED SET BY WM. ROHDE IN A SURVEY HE DID IN SECTION 12. LOCATION ACCEPTED AFTER A TRAVERSE OF THE NORTH 1/2 OF SECTION 11. REPLACED RR SPIKE WITH A HARRISON MONUMENT AND TIED OUT.

2018- PLS 2994 FOUND COTTON GIN SPINDLE 2" BELOW THE ROAD SURFACE, 2 WITNESSES AND 1 TIE. REMOVED THE COTTON GIN SPINDLE AND FOUND NO EVIDENCE OF ANY ADDITIONAL MONUMENTS BELOW. THE COTTON GIN SPINDLE LOCATION AGREES WITH THE EXISTING WITNESSES AND TIE. ACCEPTED THE COTTON GIN SPINDLE LOCATION AS THE CORNER. RE-SET THE COTTON GIN SPINDLE AT THE CORNER LOCATION. SET 4 NEW TIES AND MEASURED TO THE TIES AND WITNESSES.



LOCATION
 (INDICATE CORNER BY "X")

SEAL:



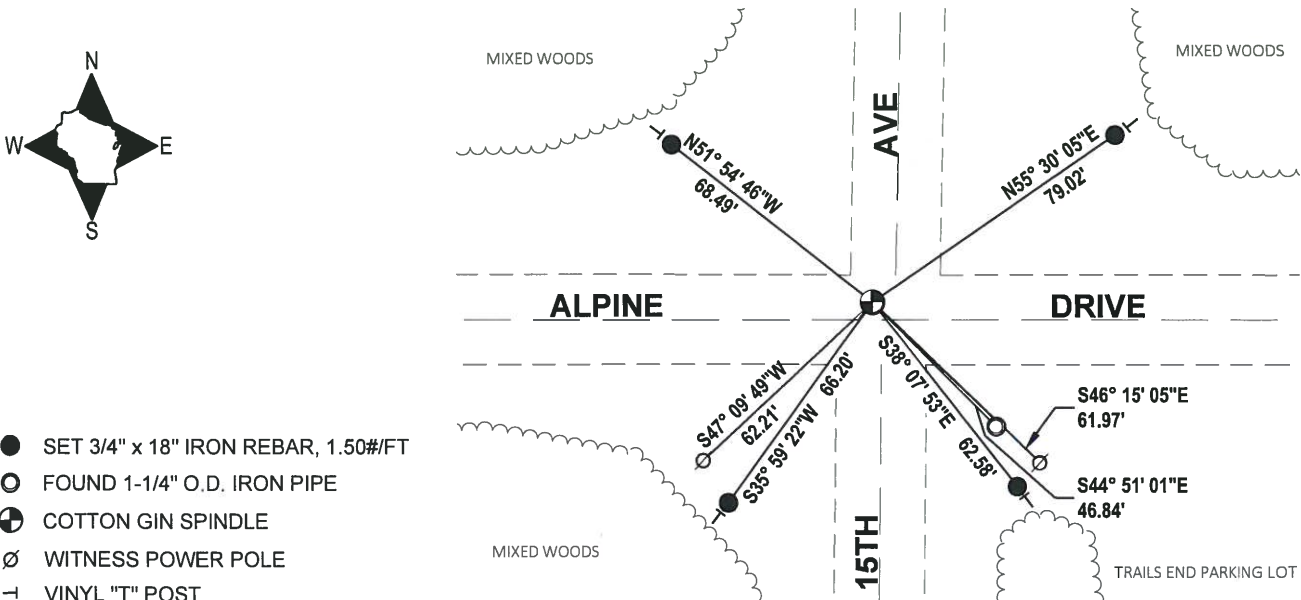
DATA SHOWN HERE ON THIS TIE SHEET IS CORRECT AND COMPLETE TO THE BEST OF MY KNOWLEDGE AND BELIEF.

PROFESSIONAL LAND SURVEYOR

DATE 7-18-18

TIE SKETCH

NOTE: THE CORNER FALLS 5'± NORTH OF THE CENTERLINE OF ALPINE DRIVE AND 6'± WEST OF THE CENTERLINE OF 15TH AVE.

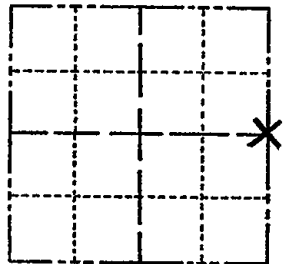


ADAMS COUNTY

Survey Monument Record

TYPE OF MONUMENT: 30" HARRISON
 STATE PLANE COORDINATES: N _____
 E _____
 ELEVATION — M.S.L. DATUM: _____
 THETA ANGLE: _____
 FIELD BOOK: 108 PAGE 89

CORNER NO. 305
 SECTION 11
 TOWN 20
 RANGE 5



LOCATION
(Indicated by 'X')

SEAL:

BASIS FOR MONUMENT LOCATION

(Use reverse side if necessary)

Show info such as: History of corner, with reference to Vol. and pg, dates, surveyor; exact description of monument replaced; if location computed, by taped or EDM traverse; landowner remarks, etc.

Replaced railroad spike found and believed set by Wm. Rohde in a survey he did in Sec. 12. Location accepted after a traverse of the N½ of Sec. 11.

See the reverse side for the updated map Nov. 11, 1983

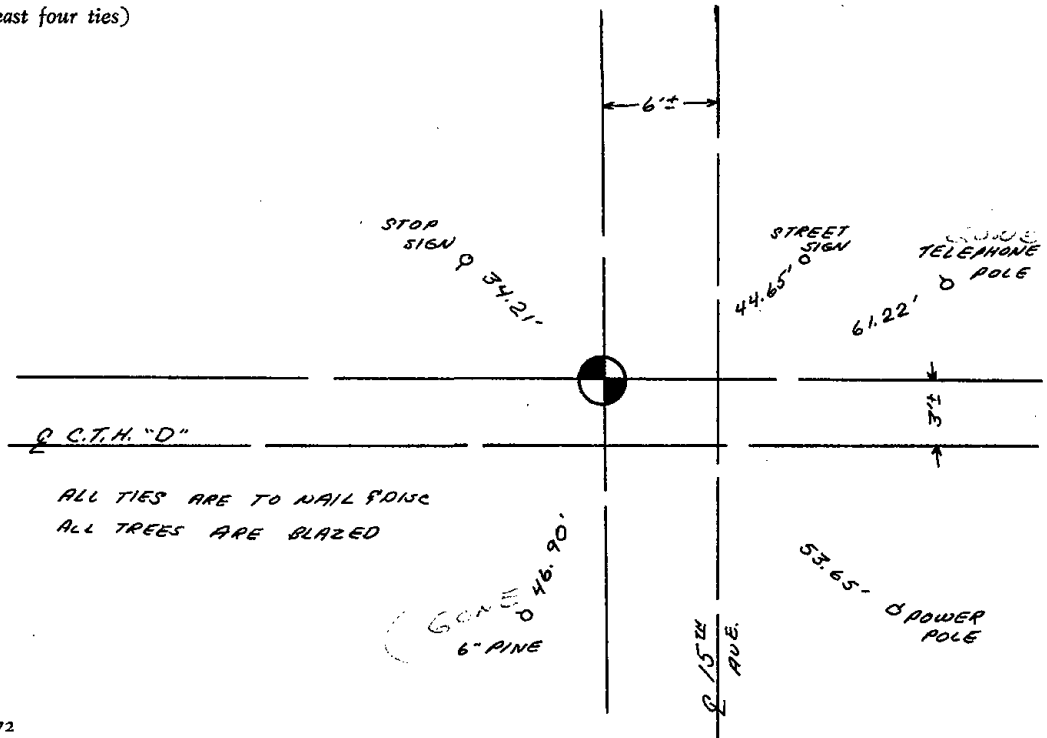
OK 11-5-79 38-11

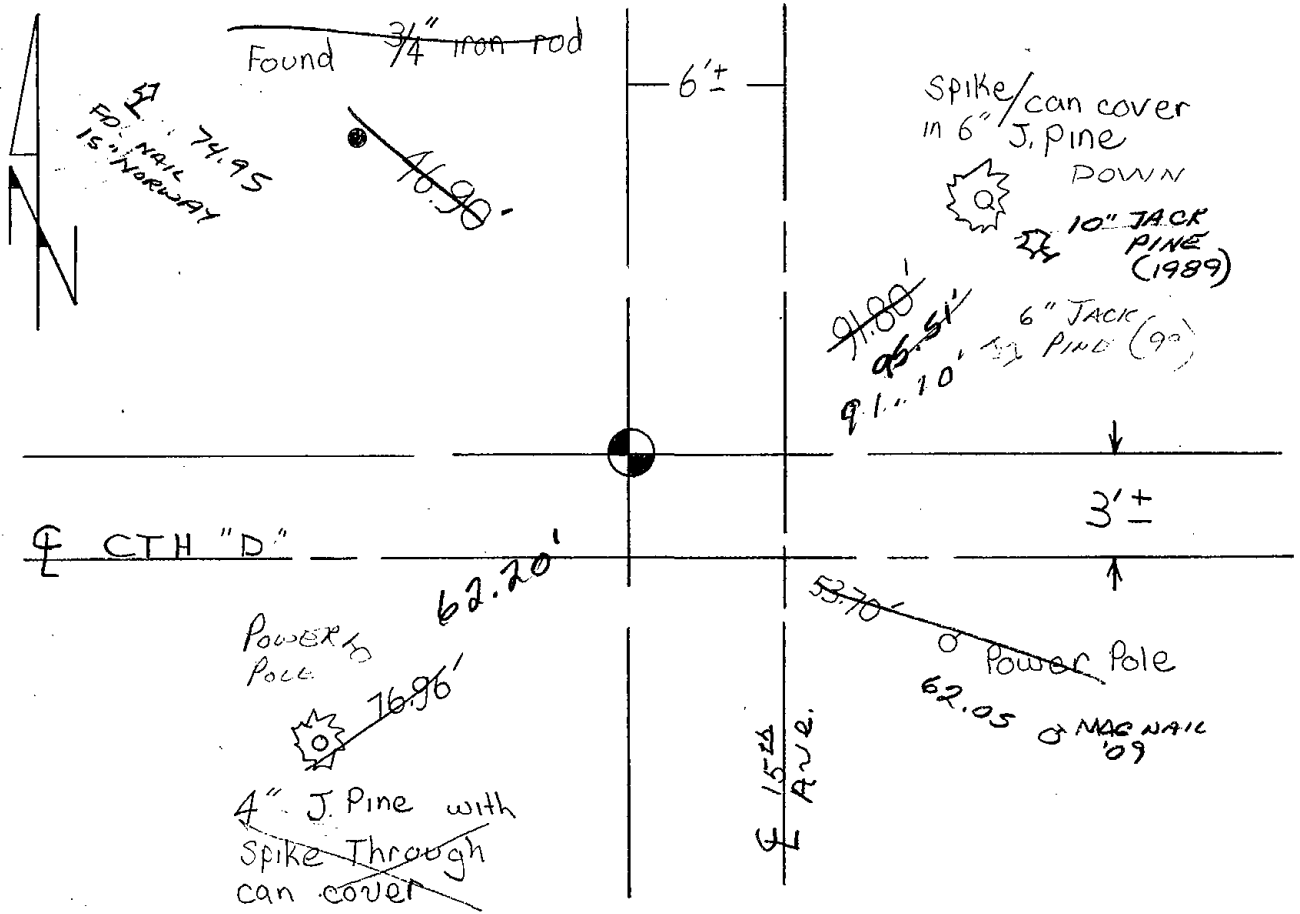
CERTIFIED CORRECT:

Anthony B. Kuchavali
 Registered Land Surveyor
 DATE: 9/18/73

TIE SKETCH

(Show at least four ties)





Map updated on Nov. 11, 1983 Ken Carlson

1 NEW TIE 6-12-89 MK-SS

OK 3 MARCH 94 CR-JL

2-GONE, 2-NEW, 2-16-99-JL-SS

OK, 2-26-04-JL

2 NEW TIES - FD 1/2" SPLINED? NAIL? FITS TIES SW ENE