

PUBLIC LAND SURVEY MONUMENT RECORD

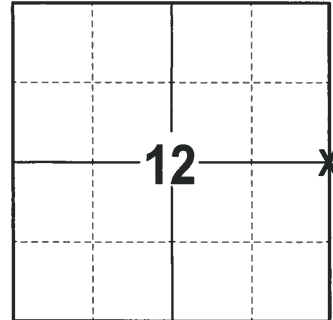
TYPE OF MONUMENT: RAILROAD SPIKE
 ADAMS COUNTY COORDINATES, NAD 83 (2007)

N. 311281.784

E. 525549.802

ELEVATION- DATUM

FIELD WORK DATE: 02/15/2018



BASIS FOR MONUMENT LOCATION

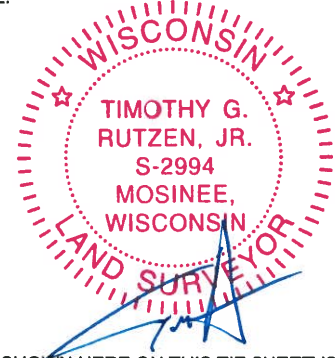
1973 - PLS 878 FOUND A 1" IRON PIPE, ACCEPTED IT AS BEING CORRECT IN LOCATION. REPLACED IT WITH A HARRISON MONUMENT AND TIED OUT.

1995 - PLS (UNKNOWN) MONUMENT REMOVED FOR ROAD CONSTRUCTION. RAILROAD SPIKE WAS RE-SET AND RE-TIED CORNER.

2018 - PLS 2994 FOUND RAILROAD SPIKE 1" BELOW THE SURFACE, 1 TIE AND 2 WITNESSES. DID NOT REMOVE RAILROAD SPIKE TO SEARCH FOR A HARRISON BELOW DUE TO PREVIOUS TIE SHEET STATING THE HARRISON WAS REMOVED FOR CONSTRUCTION. THE RAILROAD SPIKE AGREES WITH THE TIE AND WITNESSES. ACCEPTED THE RAILROAD SPIKE AS THE CORNER. SET 3 NEW TIES AND MEASURED TO THE TIES AND WITNESSES.

LOCATION
(INDICATE CORNER BY "X")

SEAL:



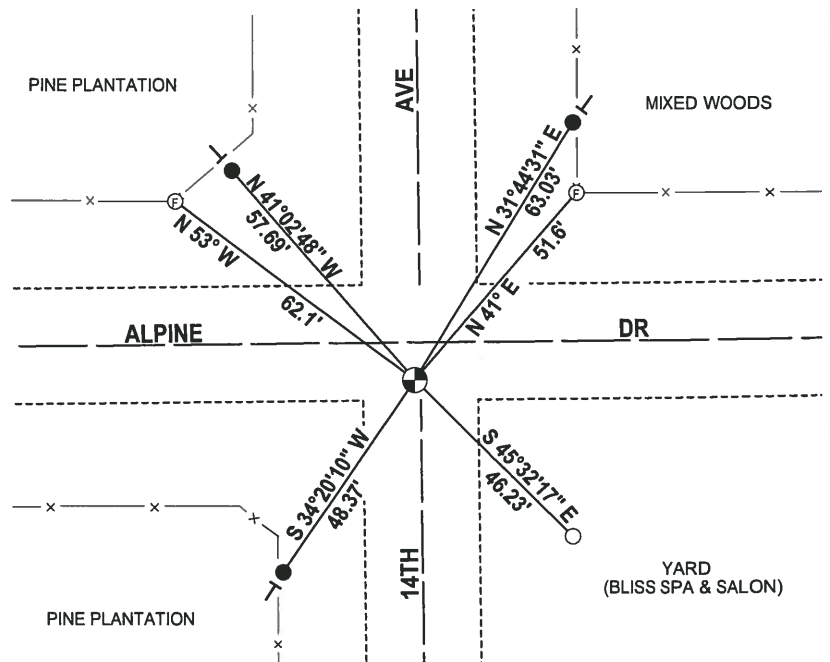
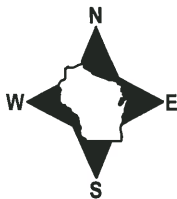
DATA SHOWN HERE ON THIS TIE SHEET IS CORRECT AND COMPLETE TO THE BEST OF MY KNOWLEDGE AND BELIEF.

PROFESSIONAL LAND SURVEYOR

DATE 3-1-18

- TIE SKETCH -

NOTE: THE CORNER FALLS 8± SOUTH OF THE CENTERLINE OF ALPINE DR AND 1± WEST OF THE CENTERLINE OF 14TH AVE.

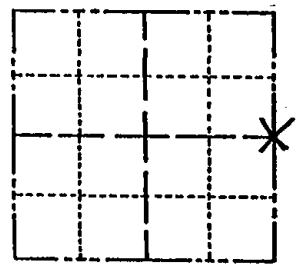


- 3/4" x 18" IRON REBAR SET, 1.50#/FT
- 3/4" IRON ROD FOUND
- ⊕ RAILROAD SPIKE FOUND
- ⊙ WITNESS FENCE POST
- VINYL "T" POST

Government Land Corner Certificate

_____ County
 TYPE OF MONUMENT: RAILROAD SPIKE
 STATE PLANE COORDINATES: N _____
 E _____
 ELEVATION — M.S.L. DATUM: _____
 THETA ANGLE: _____
 FIELD BOOK: _____ PAGE _____
 DRAWN BY: _____

CORNER NO. 306
 SECTION 12
 TOWN 20
 RANGE 5



LOCATION
(Indicated by 'X')

BASIS FOR MONUMENT LOCATION

Show info such as: History of corner, with reference to Vol. and pg., dates, surveyor; exact description of monument replaced; if location computed, by taped or EDM traverse; landowner remarks, etc. (Use reverse side if necessary)

MONUMENT REMOVED FOR ROAD CONSTRUCTION
 RAILROAD SPIKE SET - NEW DISTANCES
 8-14-95 SS-JG

SEAL:

DATA SHOWN HERE ON
CERTIFIED CORRECT:

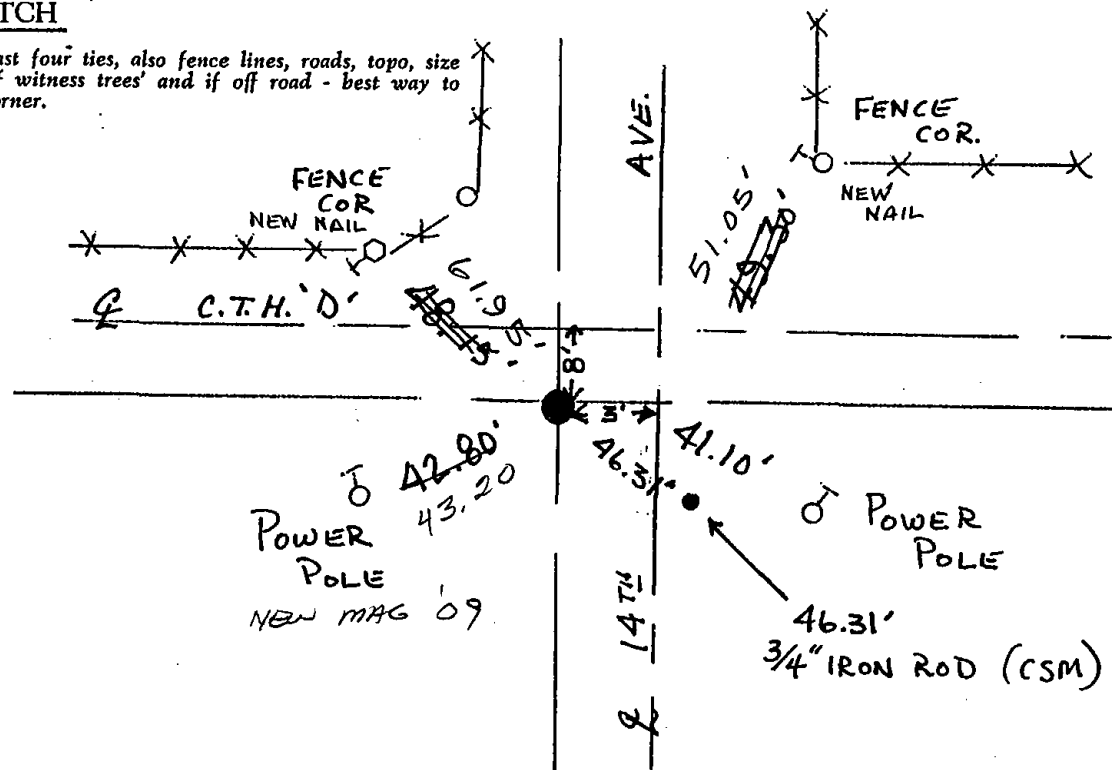
Registered Land Surveyor

DATE: _____

ALL OK 1-11-99 JG-JF
 2-GONE, 2-NEW, 2-25-DA-JG
 1 NEW TIE 9-25-09 SS

TIE SKETCH

Show at least four ties, also fence lines, roads, topo, size and type of witness trees and if off road - best way to arrive at corner.



ADAMS COUNTY

Survey Monument Record

TYPE OF MONUMENT: 30" HARRISON

STATE PLANE COORDINATES: N _____

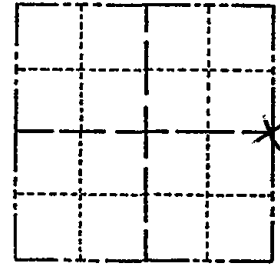
E _____

ELEVATION — M.S.L. DATUM: _____

THETA ANGLE: _____

FIELD BOOK: 108 PAGE 89

CORNER NO. 306 ⁽⁴⁰⁾
SECTION 12
TOWN 20
RANGE 5



LOCATION
(Indicated by 'X')

SEAL:

BASIS FOR MONUMENT LOCATION

(Use reverse side if necessary)

Show info such as: History of corner, with reference to Vol. and pg, dates, surveyor; exact description of monument replaced; if location computed, by taped or EDM traverse; landowner remarks, etc.

Found 1" iron pipe and accepted it as being correct in location. Replaced it with Harrison monument.



OK 5-7-84 DK-SS
OK 6-12-89 MK-SS
OK 2-11-94 CR-SS

CERTIFIED CORRECT:

Anthony B. Kiedrowski
Registered Land Surveyor

DATE: 9-18-73

TIE SKETCH

(Show at least four ties)

