

## PUBLIC LAND SURVEY MONUMENT RECORD

TYPE OF MONUMENT: HARRISON (BROKEN TOP)  
 ADAMS COUNTY COORDINATES, NAD 83 (2007)

N. 308699.203

E. 512304.616

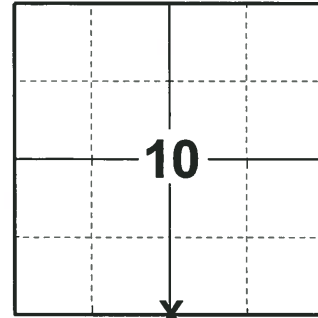
ELEVATION- - - - DATUM - - - -

FIELD WORK DATE: 06/05/2018

### BASIS FOR MONUMENT LOCATION

1976- PLS 1103 RAN EDM/TRANSIT AROUND SECTION 15 TO DETERMINE SEARCH AREAS. DID NOT EXCAVATE WITH BACKHOE BECAUSE ENTIRE AREA IS FULL WITH BACKWATERS OF THE WISCONSIN RIVER. CALCULATED POSITION BY DOUBLING OVER DISTANCE FROM NORTHEAST CORNER OF SECTION 15 AND A STONE FOUND AT THE NORTHEAST CORNER OF THE NW 1/4 OF THE NE 1/4 OF SECTION 15. SET A HARRISON MONUMENT AND TIED OUT.

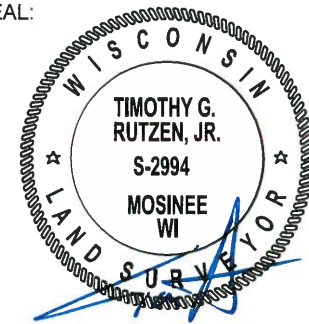
2018- PLS 2994 FOUND A HARRISON MONUMENT WITH BROKEN TOP 18" BELOW THE ROAD SURFACE AND 3 WITNESS TREES. THE MONUMENT AGREES WITH THE EXISTING WITNESS TREES. ACCEPTED THE HARRISON MONUMENT WITH BROKEN TOP AS THE CORNER LOCATION. SET 4 NEW TIES AND MEASURED TO THE TIES AND WITNESS TREES.



LOCATION

(INDICATE CORNER BY "X")

SEAL:



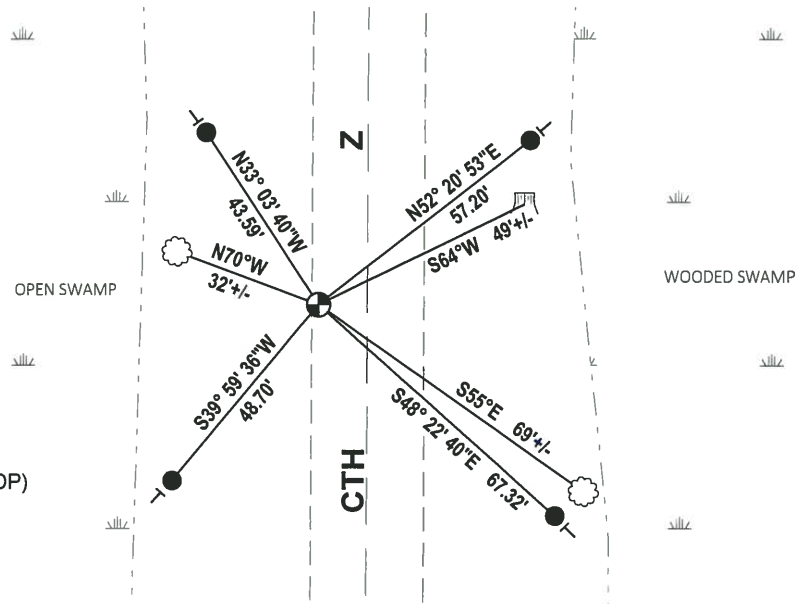
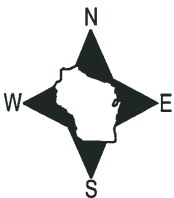
DATA SHOWN HERE ON THIS TIE SHEET IS CORRECT AND COMPLETE TO THE BEST OF MY KNOWLEDGE AND BELIEF.

PROFESSIONAL LAND SURVEYOR

DATE 7-18-18

### - TIE SKETCH

NOTE: CORNER FALLS 11± WEST OF THE CENTERLINE OF CTH Z.



- SET 3/4" x 18" IRON REBAR, 1.50#/FT
- ⊕ FOUND HARRISON MONUMENT (BROKEN TOP)
- ┆ VINYL "T" POST
- ☁ WITNESS TREE

ADAMS COUNTY

Survey Monument Record

TYPE OF MONUMENT: Harrison Monument

STATE PLANE COORDINATES: N \_\_\_\_\_

E \_\_\_\_\_

ELEVATION — M.S.L. DATUM: \_\_\_\_\_

THETA ANGLE: \_\_\_\_\_

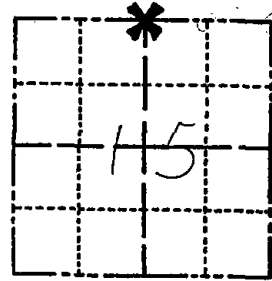
FIELD BOOK: 37 PAGE 26

CORNER NO. 1024

SECTION 15

TOWN 20

RANGE 5



LOCATION (Indicated by 'X')

SEAL:



BASIS FOR MONUMENT LOCATION

(Use reverse side if necessary)

Show info such as: History of corner, with reference to Vol. and pg, dates, surveyor; exact description of monument replaced; if location computed, by taped or EDM traverse; landowner remarks, etc.

Ran EDM/transit traverse around Section 15 to determine search areas.

Did not excavate with backhoe because entire area is fill dike over backwaters of the Wisconsin River.

Set corner by doubling over distance from Northeast corner of Section 15 and a stone found at the Northeast corner of the NW 1/4 of the NE 1/4 of Section 15.

Set 4-12-1976.

4 NEW TIES 3 MARCH 79 CR-JG

11-5-79 OK BS-SS

ok 7-27-84 dk-ss

OK 2-2-89 SS

OK 2-15-99-JG-SS

CERTIFIED CORRECT:

Dale C. Hagen  
Registered Land Surveyor

DATE: 6-1-1976

TIE SKETCH

(Show at least four ties)

NOTE

Ties in trees to nail in disc.

