

PUBLIC LAND SURVEY MONUMENT RECORD

TYPE OF MONUMENT: HARRISON
 ADAMS COUNTY COORDINATES, NAD 83 (2007)

N. 306059.837

E. 514930.927

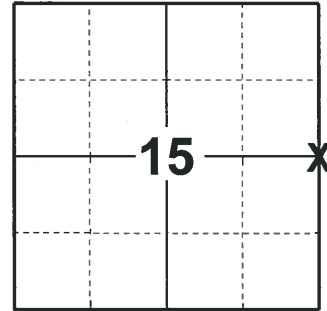
ELEVATION- DATUM

FIELD WORK DATE: 06/06/2018

BASIS FOR MONUMENT LOCATION

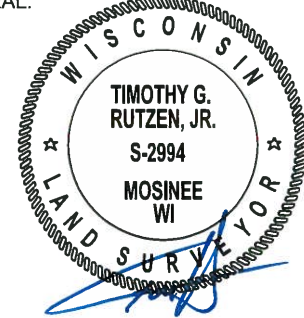
1976- PLS 1103 RAN EMD/TRANSIT TRAVERSE AROUND SECTION 15 TO DETERMINE AREAS. FOUND 6"x8" STONE WITH CHISEL CROSS WITH 1" REBAR 0.60' TO THE SOUTH OF THE STONE. ADJACENT LAND OWNER VERIFIED THAT THE STONE HAD BEEN SET IN THE EARLY 1900'S (BY PERSONS UNKNOWN) AND HAD BEEN USED AS THE QUARTER CORNER. REPLACED STONE WITH HARRISON MONUMENT AND LEFT REBAR IN PLACE AND TIED OUT CORNER.

2018- PLS 2449 FOUND HARRISON MONUMENT 3" ABOVE THE GROUND SURFACE AND DID NOT RECOVER ANY WITNESSES. ACCEPTED THE HARRISON AS THE CORNER. SET 4 NEW TIES AND MEASURED TO THE TIES.



LOCATION
 (INDICATE CORNER BY "X")

SEAL:

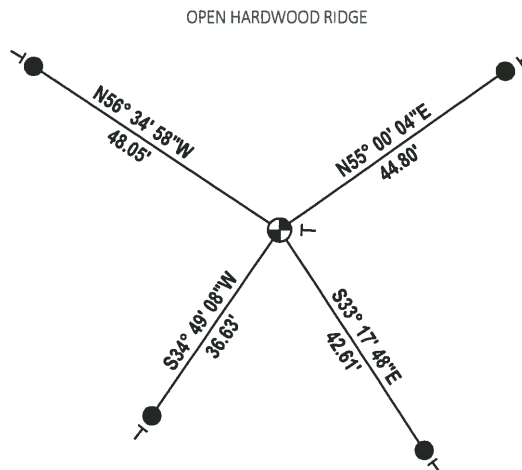


DATA SHOWN HERE ON THIS TIE SHEET IS CORRECT AND COMPLETE TO THE BEST OF MY KNOWLEDGE AND BELIEF.

PROFESSIONAL LAND SURVEYOR

DATE 7-18-18

TIE SKETCH

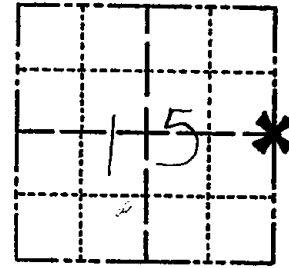


- SET 3/4" x 18" IRON REBAR, 1.50#/FT
- ⊕ FOUND HARRISON MONUMENT
- VINYL "T" POST

ADAMS COUNTY
Survey Monument Record

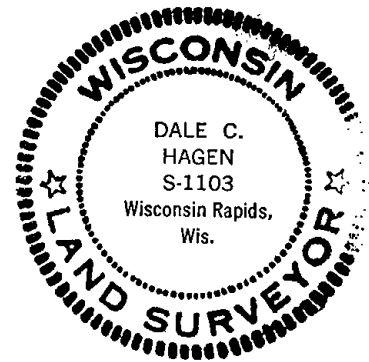
TYPE OF MONUMENT: Harrison
 STATE PLANE COORDINATES: N _____
 E _____
 ELEVATION — M.S.L. DATUM: _____
 THETA ANGLE: _____
 FIELD BOOK: 37 PAGE 24

CORNER NO. 1025
 SECTION 15
 TOWN 20
 RANGE 5



LOCATION
 (Indicated by 'X')

SEAL:



BASIS FOR MONUMENT LOCATION

(Use reverse side if necessary)

Show info such as: History of corner, with reference to Vol. and pg. dates, surveyor; exact description of monument replaced; if location computed, by taped or EDM traverse; landowner remarks, etc.

Ran EDM/transit traverse around Section 15 to determine search areas.

Found 6" by 8" stone with chisel cross with 1" rebar 0.60 feet to the South.

Adjacent land owner verified that the stone had been set in the early 1900's (by persons unknown) and had been used as the Quarter corner.

Replaced stone with Harrison monument and left rebar in place.

Set 4-15-1976.

OK 11-5-79 BS-SS
 OK 7-24-84 Mk-SS OK 2-2-89 SS

CERTIFIED CORRECT:

Dale C. Hagen
 Registered Land Surveyor
 DATE: 6-1-1976

TIE SKETCH OK 3-4-94 - JG-SS

(Show at least four ties) 1-NEW, Mon, OK 2-15-99 - JG-SS

Note: 1" Rebar .60' South of Harrison

NOTE:

Ties in trees to nail in disc.

