

## PUBLIC LAND SURVEY MONUMENT RECORD

TYPE OF MONUMENT: 4" CONCRETE DISK W/DRILL HOLE  
 ADAMS COUNTY COORDINATES, NAD 83 (2007)

N. 303406.145

E. 514919.757

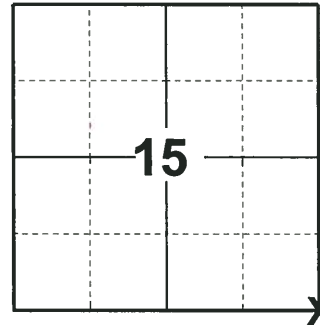
ELEVATION- \_\_\_\_\_ DATUM \_\_\_\_\_

FIELD WORK DATE: 06/05/2018

### BASIS FOR MONUMENT LOCATION

1976- PLS 1103 RAN EDM/TRANSIT TRAVERSE AROUND SECTION 15 TO DETERMINE SEARCH AREAS. FOUND 4" DIAMETER CONCRETE MONUMENT WITH LEAD CAP. DID NOT REMOVE MONUMENT, AS IT IS IN GOOD CONDITION. TIED OUT CORNER.

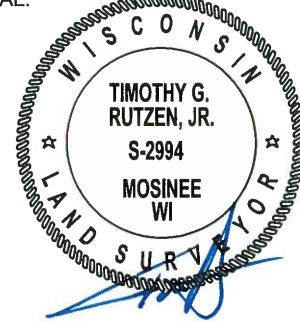
2018- PLS 2449 FOUND 4" CONCRETE DISK 12" BELOW GROUND SURFACE AND 2 TIES. THE MONUMENT AGREES WITH THE EXISTING TIES. ACCEPTED THE 4" CONCRETE DISK AS THE CORNER. SET 3 ADDITIONAL TIES AND MEASURED TO ALL TIES.



**LOCATION**

(INDICATE CORNER BY "X")

SEAL:

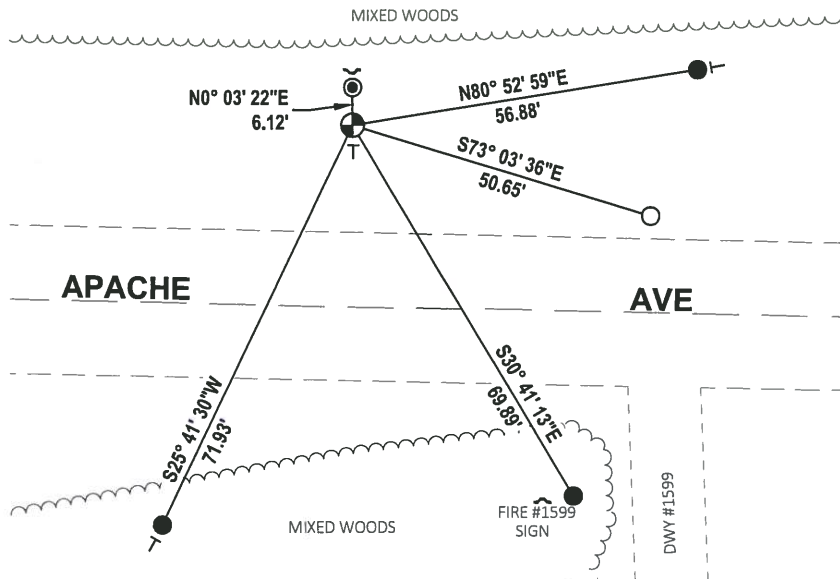
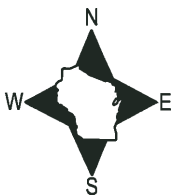


DATA SHOWN HERE ON THIS TIE SHEET IS CORRECT AND COMPLETE TO THE BEST OF MY KNOWLEDGE AND BELIEF.

PROFESSIONAL LAND SURVEYOR

DATE 7-18-18

### - TIE SKETCH



- SET 3/4" x 18" IRON REBAR, 1.50#/FT
- FOUND 3/4" IRON ROD
- ◎ FOUND 1-1/4" IRON ROD
- ⊙ FOUND CONCRETE DISK MONUMENT
- ~ STEEL FENCE POST
- VINYL "T" POST

# ADAMS COUNTY

## Survey Monument Record

TYPE OF MONUMENT: Concrete Monument

STATE PLANE COORDINATES: N \_\_\_\_\_

E \_\_\_\_\_

ELEVATION — M.S.L. DATUM: \_\_\_\_\_

THETA ANGLE: \_\_\_\_\_

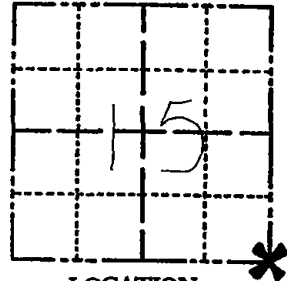
FIELD BOOK: 37 PAGE 25

CORNER NO. 1026

SECTION 15

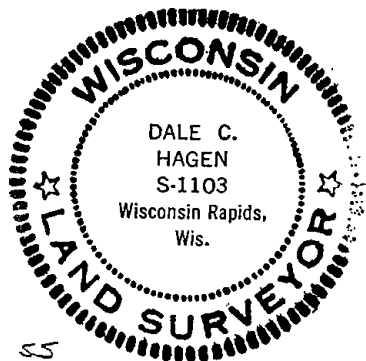
TOWN 20

RANGE 5



LOCATION  
(Indicated by 'X')

SEAL:



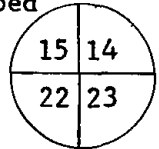
### BASIS FOR MONUMENT LOCATION

(Use reverse side if necessary)

Show info such as: History of corner, with reference to Vol. and pg, dates, surveyor; exact description of monument replaced; if location computed, by taped or EDM traverse; landowner remarks, etc.

Ran EDM/transit traverse around Section 15 to determine search areas.

Found 4" diameter concrete monument with lead cap inscribed



Did not remove monument, as it is in good condition.

2 NEW TIES 6-23-04 SS  
OK 5-4-09 SS

Tied 4-12-1976

OK 2-11-99 CR-SS

OK 5-29-79 PK-SS

Ok 4-24-84 DK-SS

OK 2-2-89 SS

OK 12-29-98 -JG

CERTIFIED CORRECT:

*Dale C. Hagen*  
Registered Land Surveyor

DATE: 6-1-1976

### TIE SKETCH

(Show at least four ties)

#### NOTE

- 1) Ties in trees to nail and RLS 878' disc.
- 2) Trees are blazed and scribed chest high.

