

PUBLIC LAND SURVEY MONUMENT RECORD

TYPE OF MONUMENT: HARRISON
 ADAMS COUNTY COORDINATES, NAD 83 (2007)

N. 303382.382

E. 517563.915

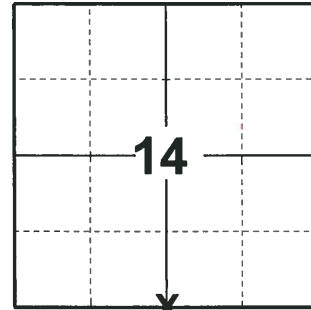
ELEVATION- DATUM

FIELD WORK DATE: 06/06/2018

BASIS FOR MONUMENT LOCATION

1976- PLS 878 FOUND PIPE SET BY W.C. ROHDE IN A SURVEY OF A FORTY IN SECTION 14. ACCEPTED AS CORRECT. PIPE IDENTIFIED BY PLUG MARKED S-0841. REPLACED 1" IRON PIPE WITH HARRISON MONUMENT AND TIED OUT.

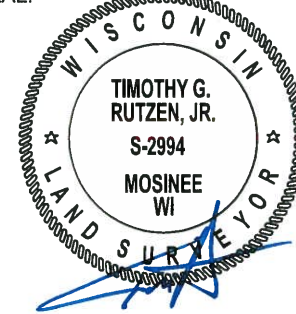
2018- PLS 2449 FOUND HARRISON MONUMENT 12" BELOW ROAD SURFACE AND 2 TIES. THE MONUMENT AGREES WITH THE EXISTING TIES. ACCEPTED THE HARRISON MONUMENT AS THE CORNER LOCATION. SET 2 NEW TIES AND MEASURED TO THE TIES.



LOCATION

(INDICATE CORNER BY "X")

SEAL:



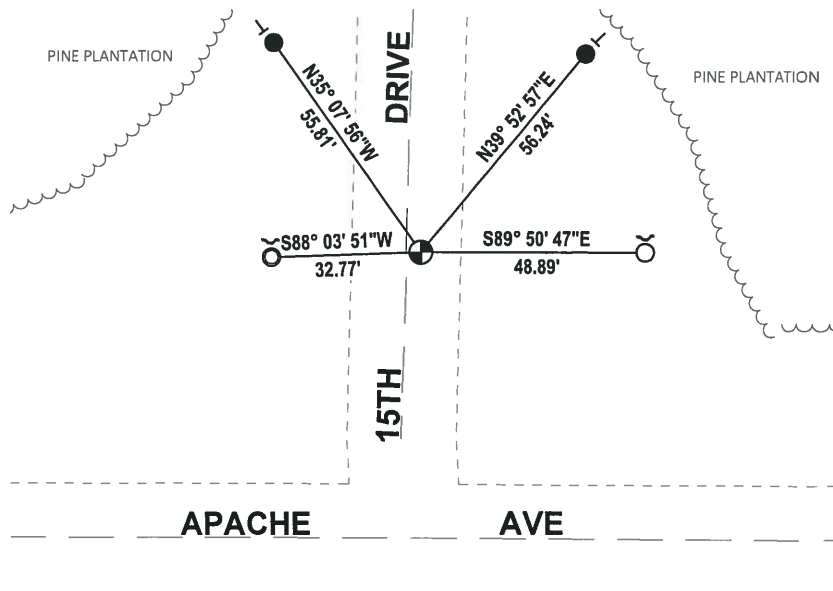
DATA SHOWN HERE ON THIS TIE SHEET IS CORRECT AND COMPLETE TO THE BEST OF MY KNOWLEDGE AND BELIEF.

PROFESSIONAL LAND SURVEYOR

DATE 7-18-18

- TIE SKETCH

NOTE: CORNER FALLS 3.5'± EAST OF 15TH DRIVE CENTERLINE.



- SET 3/4" x 18" IRON REBAR, 1.50#/FT
- FOUND 3/4" IRON ROD
- ⊙ FOUND 1-1/4" O.D. IRON PIPE
- ⊕ FOUND HARRISON MONUMENT
- ↗ STEEL FENCE POST
- ┌ VINYL "T" POST

ADAMS COUNTY

Survey Monument Record

TYPE OF MONUMENT: Harrison standard

STATE PLANE COORDINATES: N _____

E _____

ELEVATION — M.S.L. DATUM: _____

THETA ANGLE: _____

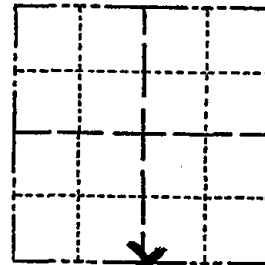
FIELD BOOK: _____ PAGE _____

CORNER NO. 70

SECTION 14

TOWN 20

RANGE 5



LOCATION
(Indicated by 'X')



BASIS FOR MONUMENT LOCATION

(Use reverse side if necessary)

Show info such as: History of corner, with reference to Vol. and pg, dates, surveyor; exact description of monument replaced; if location computed, by taped or EDM traverse; landowner remarks, etc.

Replaced 1" iron pipe with Harrison.
Pipe set by W.C.Rohde in a survey of a forty in Sec. 14. Accepted as correct.
Pipe identified by plug marked S-0841.

SEAL:



See the reverse side of this sheet to see new map

MON. OK NEW TIES 5-29-79 PK-55
12" I BELOW SURFACE 4' EAST OF E

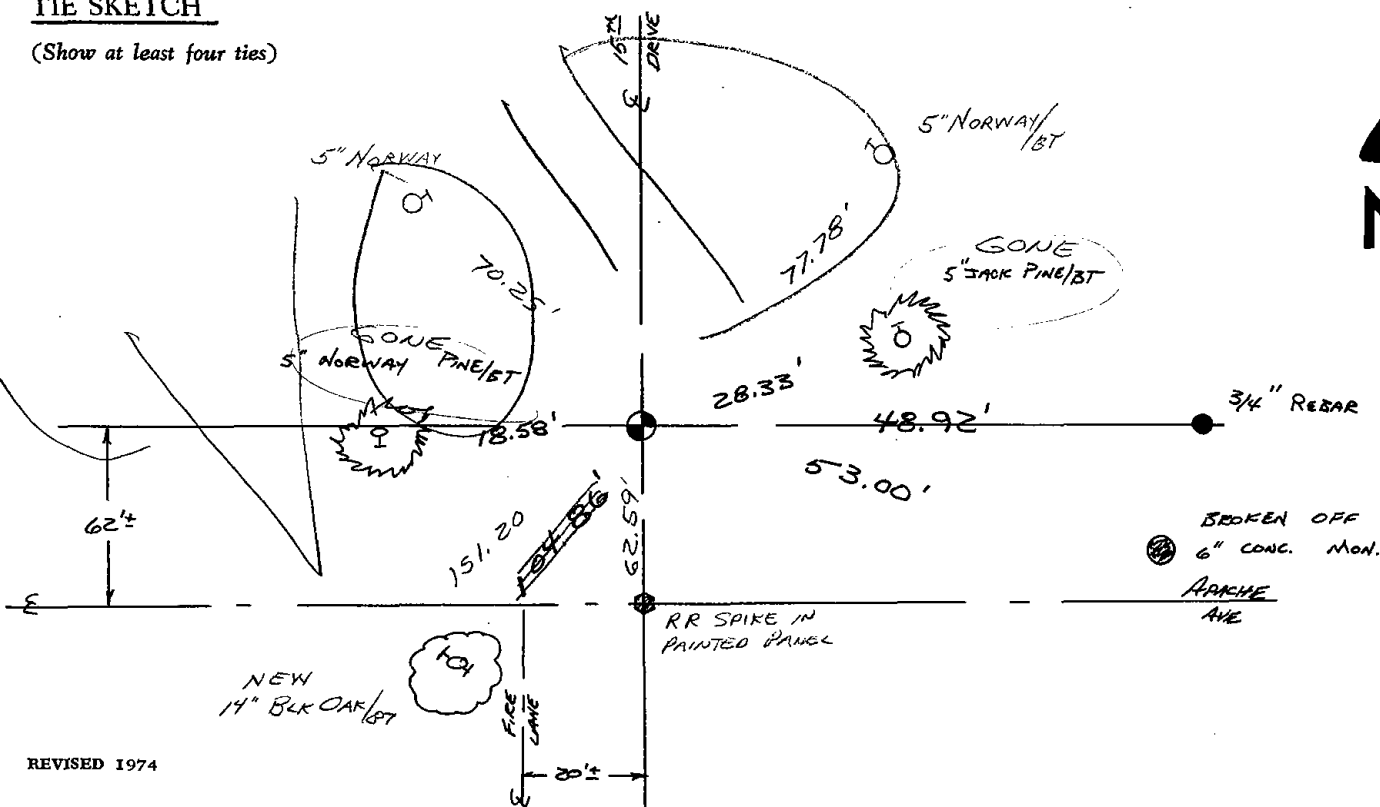
CERTIFIED CORRECT:

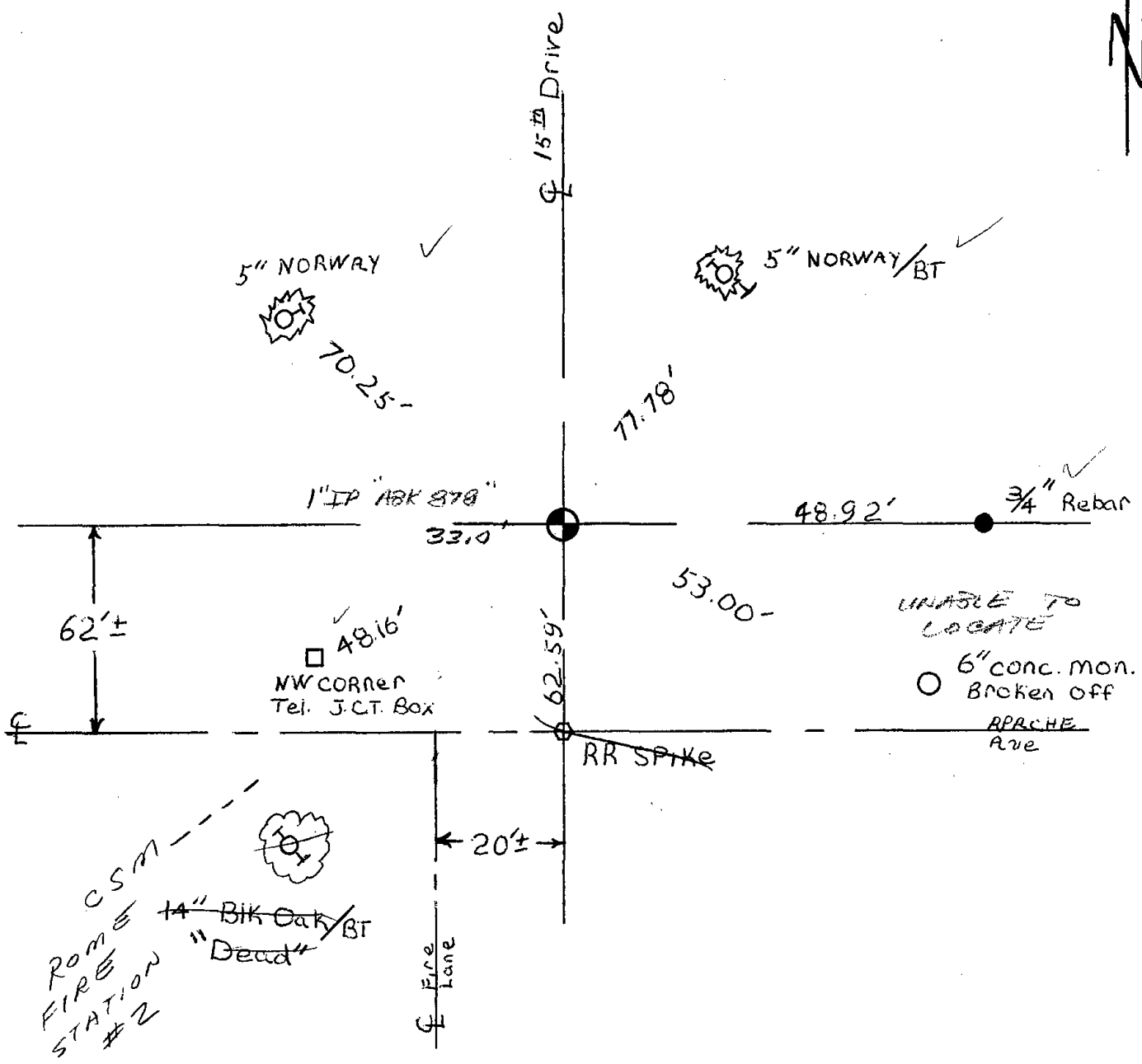
Anthony B. Kiedrowski
Registered Land Surveyor

DATE: July, 1976

TIE SKETCH

(Show at least four ties)





Updated 4-25-84 DK-SS
 OK 2-2-89 SS
 OK 2-11-94 SS-CR
 OK 12-29-98 - JG
 OK 2-26-04 - JG
 " 5-04-09 SS