

PUBLIC LAND SURVEY MONUMENT RECORD

TYPE OF MONUMENT: HARRISON (BROKEN-TOP)
 ADAMS COUNTY COORDINATES, NAD 83 (2007)

N. 303385.498

E. 522860.751

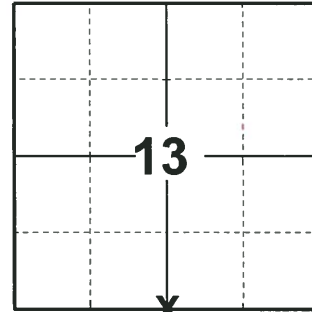
ELEVATION- DATUM

FIELD WORK DATE: 06/06/2018

BASIS FOR MONUMENT LOCATION

1981- PLS 878 ANY PREVIOUS MONUMENTATION OF THIS CORNER WAS DESTROYED BY ROAD CONSTRUCTION. THIS CORNER WAS CALCULATED ON LINE AND EQUIDISTANT BETWEEN SECTION CORNERS. SET HARRISON AT THE CALCULATED POSITION AND TIED OUT.

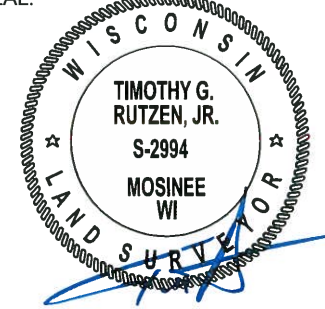
2018- 2994 FOUND A HARRISON MONUMENT WITH A BROKEN-TOP 10" BELOW THE GROUND SURFACE AND 2 WITNESSES. THE MONUMENT AGREES WITH THE EXISTING WITNESSES. ACCEPTED THE HARRISON MONUMENT WITH A BROKEN-TOP AS THE CORNER LOCATION. SET 4 NEW TIES AND MEASURED TO THE TIES AND WITNESSES.



LOCATION

(INDICATE CORNER BY "X")

SEAL:



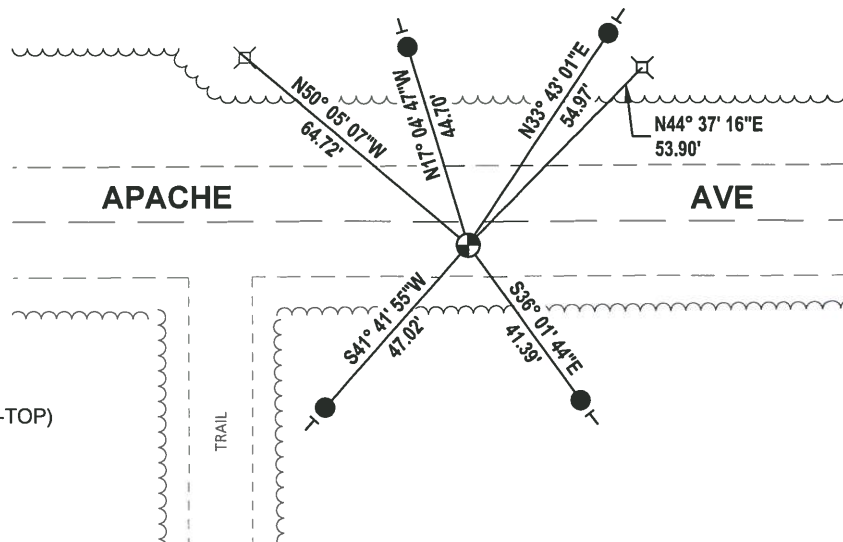
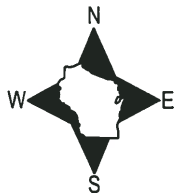
DATA SHOWN HERE ON THIS TIE SHEET IS CORRECT AND COMPLETE TO THE BEST OF MY KNOWLEDGE AND BELIEF.

PROFESSIONAL LAND SURVEYOR

DATE 7-18-18

TIE SKETCH

NOTE: CORNER FALLS 5'± SOUTH OF THE CENTERLINE OF APACHE AVE.

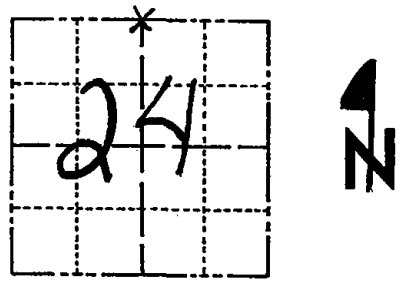


- SET 3/4" x 18" IRON REBAR, 1.50#/FT
- ⊕ FOUND HARRISON MONUMENT (BROKEN-TOP)
- ┆ VINYL "T" POST
- ⊞ ELECTRICAL/TELEPHONE PEDSTAL

Government Land Corner Certificate

ADAMS County
 TYPE OF MONUMENT: HARRISON
 STATE PLANE COORDINATES: N _____
 E _____
 ELEVATION — M.S.L. DATUM: _____
 THETA ANGLE: _____
 FIELD BOOK: 69 PAGE 121
 DRAWN BY: L.C.

CORNER NO. 72
 SECTION 24
 TOWN 20
 RANGE 5



LOCATION
(Indicated by 'X')

BASIS FOR MONUMENT LOCATION

Show info such as: History of corner, with reference to Vol. and pg., dates, surveyor; exact description of monument replaced; if location computed, by taped or EDM traverse; landowner remarks, etc. (Use reverse side if necessary)

Any previous monumentation of this corner destroyed by road construction. This corner is set on line and equidistant between section corners.

- Ok 4-25-84 DK-SS
- 2 NEW TIES 1-18-89-SS
- OK - 2-11-94 CR-SS
- 3-GONE, 3-NEW, 12-29-98-JG
- OK, 2-26-04-JG
- 9-25-09 SS 2 NEW TIES

SEAL:



DATA SHOWN HERE ON
CERTIFIED CORRECT:

Anthony B. Kiedrowski
 Registered Land Surveyor
 DATE: 6/22/81

TIE SKETCH

Show at least four ties, also fence lines, roads, topo, size and type of witness trees' and if off road - best way to arrive at corner.

