

PUBLIC LAND SURVEY MONUMENT RECORD

TYPE OF MONUMENT: HARRISON
 ADAMS COUNTY COORDINATES, NAD 83 (2007)

N. 300755.711

E. 514925.806

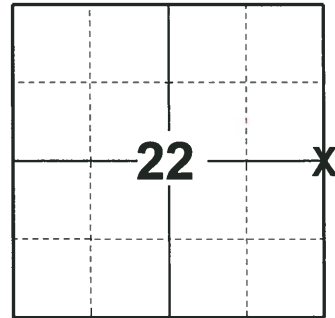
ELEVATION- - - - DATUM - - - -

FIELD WORK DATE: 06/07/2018

BASIS FOR MONUMENT LOCATION

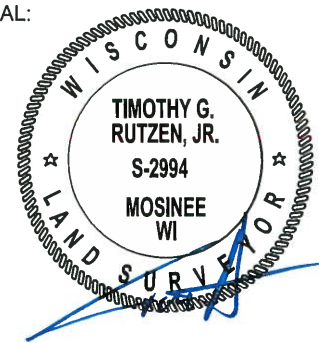
1980- PLS 584 FOUND A 1" X 24" IRON PIPE AFTER TAPING FROM THE WEST AND FROM THE NORTH DISTANCES OF THE UNRECORDED PLAT TO VERIFY THE CORRECT IRON PIPE. CHECKED THIS WITH DESCRIPTIONS TO ENSURE THE PIPE CHECKS WITH THESE DESCRIPTIONS AND THENCE WITNESSED SAME. REPLACED PIPE WITH A HARRISON AND TIED OUT

2018- PLS 2994 FOUND A HARRISON MONUMENT 2" ABOVE THE GROUND SURFACE AND DID NOT RECOVER ANY WITNESSES. ACCEPTED THE HARRISON MONUMENT AS THE BEST EVIDENCE OF THE CORNER LOCATION. SET 4 NEW TIES AND MEASURED TO THE TIES.



LOCATION
 (INDICATE CORNER BY "X")

SEAL:

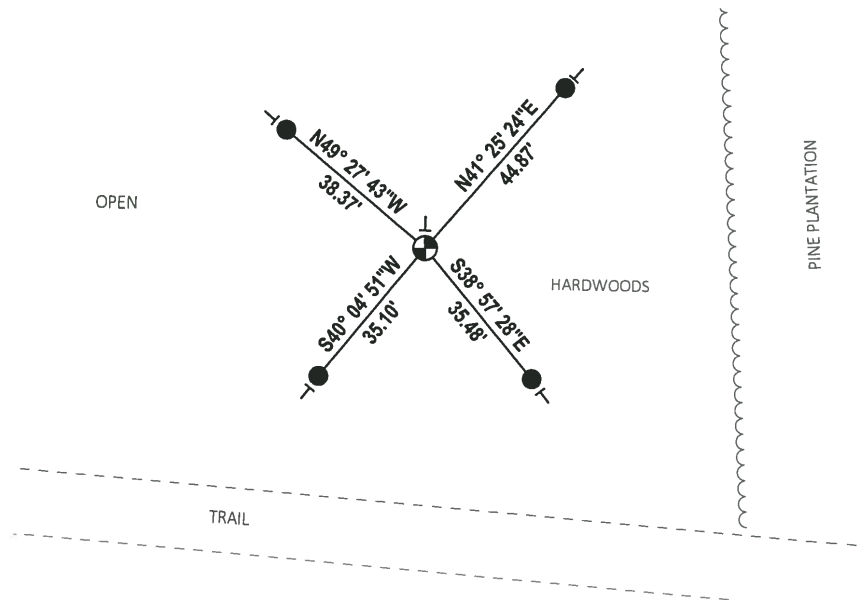


DATA SHOWN HERE ON THIS TIE SHEET IS CORRECT AND COMPLETE TO THE BEST OF MY KNOWLEDGE AND BELIEF.

PROFESSIONAL LAND SURVEYOR

DATE 7-18-18

- TIE SKETCH

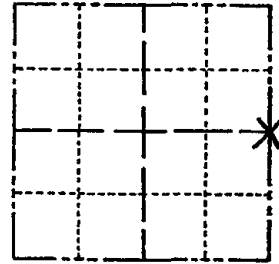


- SET 3/4" x 18" IRON REBAR, 1.50#/FT
- ⊕ FOUND HARRISON MONUMENT
- ← VINYL "T" POST

Government Land Corner Certificate

ADAMS County
 TYPE OF MONUMENT: HARRISON
 STATE PLANE COORDINATES: N _____
 E _____
 ELEVATION — M.S.L. DATUM: _____
 THETA ANGLE: _____
 FIELD BOOK: 54 PAGE 67a
 DRAWN BY: S. KMIEC

CORNER NO. 78
 SECTION 22
 TOWN 20
 RANGE 5



LOCATION
(Indicated by 'X')

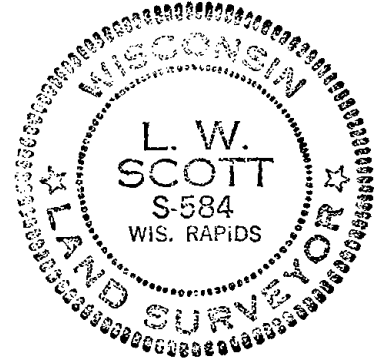
BASIS FOR MONUMENT LOCATION

Show info such as: History of corner, with reference to Vol. and pg., dates, surveyor; exact description of monument replaced; if location computed, by taped or EDM traverse; landowner remarks, etc. (Use reverse side if necessary)

Replaced 1" X 24" iron pipe with a Harrison after taping from the West and from the North distances of the unrecorded plat to determine the right iron pipe. Checking this with description to make the Harrison check with these descriptions and thence witnessed same. Ties to nails and discs in the witness trees.

- OK - 4-25-84 DK-SS
- OK 2-2-84 SS
- OK 3-3-94-CR-JG
- OK 12-29-98-JG
- OK 8-30-04 SS
- OK 2-18-09 SS

SEAL:



DATA SHOWN HERE ON
CERTIFIED CORRECT:

L. W. Scott
Registered Land Surveyor

DATE: 10/31/80

TIE SKETCH

Show at least four ties, also fence lines, roads, topo, size and type of witness trees and if off road - best way to arrive at corner.

