

PUBLIC LAND SURVEY MONUMENT RECORD

TYPE OF MONUMENT: 1-1/4" O.D. IRON PIPE W/CAP
 ADAMS COUNTY COORDINATES, NAD 83 (2007)

N. 298091.863

E. 510943.394

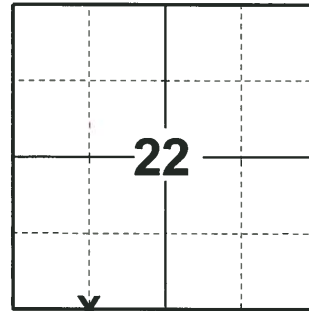
ELEVATION- DATUM

FIELD WORK DATE: 06/05/2018

BASIS FOR MONUMENT LOCATION

1981- PLS 878 CALCULATED POSITION ON AN EXTENSION OF THE NORTH LINE OF THE NORTHEAST QUARTER OF SECTION 27 AND A POINT 33 FEET NORTH OF AN EXISTING 4X4 CONCRETE MONUMENT. SET A 1" IRON PIPE WITH PLUG AND TIED OUT.

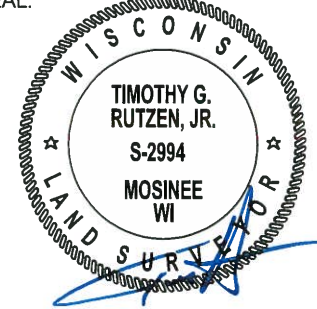
2018- PLS 2994 FOUND A 1-1/4" O.D. IRON PIPE WITH A CAP 2" BELOW THE ROAD SURFACE AND 2 TIES. THE MONUMENT AGREES WITH THE EXISTING TIES. ACCEPTED THE 1-1/4" O.D. IRON PIPE WITH A CAP AS THE CORNER LOCATION. SET 2 NEW TIES AND MEASURED TO THE TIES.



LOCATION

(INDICATE CORNER BY "X")

SEAL:



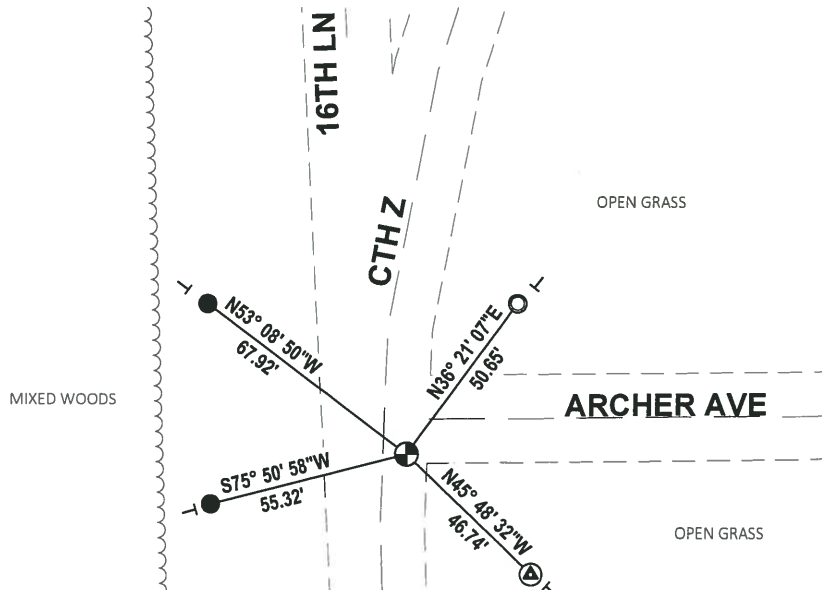
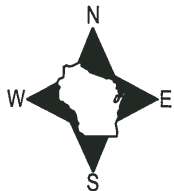
DATA SHOWN HERE ON THIS TIE SHEET IS CORRECT AND COMPLETE TO THE BEST OF MY KNOWLEDGE AND BELIEF.

PROFESSIONAL LAND SURVEYOR

DATE 7-18-18

- TIE SKETCH

NOTE: THE CORNER FALLS 6± EAST OF THE CENTERLINE OF CTH Z AND 9± SOUTH OF THE CENTERLINE OF ARCHER AVE.



- SET 3/4" x 18" IRON REBAR, 1.50#/FT
- ⊙ FOUND 4"X4" CONCRETE MONUMENT
- FOUND 1-1/4" O.D. IRON PIPE
- ⊕ FOUND 1-1/4" O.D. IRON PIPE W/CAP
- VINYL "T" POST