

## PUBLIC LAND SURVEY MONUMENT RECORD

TYPE OF MONUMENT: HARRISON  
 ADAMS COUNTY COORDINATES, NAD 83 (2007)

N. 298124.498

E. 517527.428

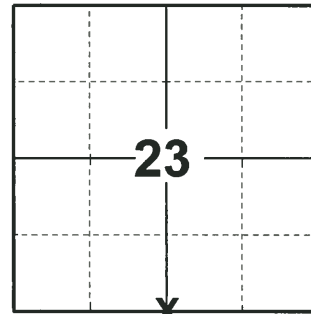
ELEVATION-      DATUM     

FIELD WORK DATE: 06/07/2018

### BASIS FOR MONUMENT LOCATION

1974- PLS 791 NOTES THE ORIGINAL CORNER WAS OBLITERATED. CALCULATED CORNER BY DIRECT SINGLE PROPORTIONAL MEASUREMENT BETWEEN NORTHEAST AND NORTHWEST CORNERS OF SECTION 26. EDM USED IN MEASUREMENTS TO DETERMINE LOCATION OF CORNER. SET HARRISON MONUMENT 8" BELOW SURFACE OF GRAVEL ROAD AND TIED OUT.

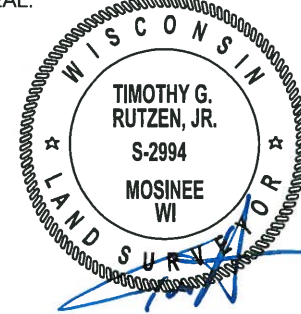
2018- PLS 2994 FOUND A HARRISON MONUMENT 12" BELOW THE ROAD SURFACE AND 1 TIE. THE MONUMENT AGREES WITH THE EXISTING TIE. ACCEPTED THE HARRISON MONUMENT AS THE CORNER LOCATION. SET 3 NEW TIES AND MEASURED TO THE TIES.



**LOCATION**

(INDICATE CORNER BY "X")

SEAL:



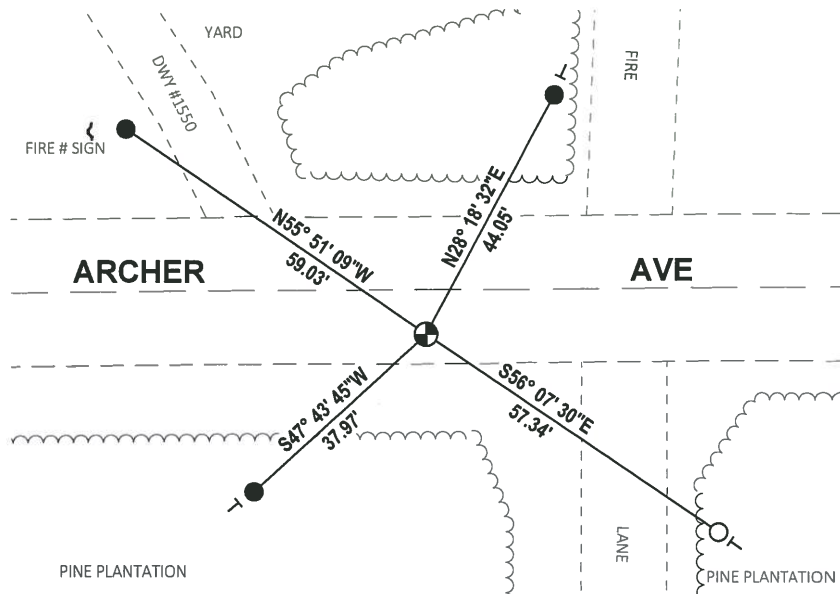
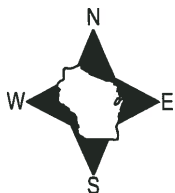
DATA SHOWN HERE ON THIS TIE SHEET IS CORRECT AND COMPLETE TO THE BEST OF MY KNOWLEDGE AND BELIEF.

PROFESSIONAL LAND SURVEYOR

DATE 7-18-18

### - TIE SKETCH

NOTE: THE CORNER FALLS 5± SOUTH OF THE CENTERLINE OF ARCHER AVE.



- SET 3/4" x 18" IRON REBAR, 1.50#/FT
- FOUND 3/4" IRON ROD
- FOUND HARRISON MONUMENT
- ~ STEEL FENCE POST
- VINYL "T" POST

ADAMS COUNTY

Survey Monument Record

TYPE OF MONUMENT: HARRISON

STATE PLANE COORDINATES: N \_\_\_\_\_

E \_\_\_\_\_

ELEVATION — M.S.L. DATUM: \_\_\_\_\_

THETA ANGLE: \_\_\_\_\_

FIELD BOOK: \_\_\_\_\_ PAGE \_\_\_\_\_

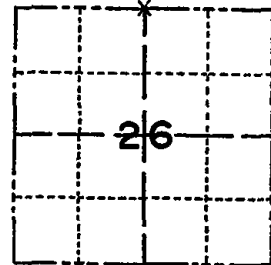
(90)

CORNER NO. 417

SECTION 26

TOWN 20 N.

RANGE 5 E.



LOCATION  
(Indicated by 'X')

SEAL:

BASIS FOR MONUMENT LOCATION


(Use reverse side if necessary)

Show info such as: History of corner, with reference to Vol. and pg, dates, surveyor; exact description of monument replaced; if location computed, by taped or EDM traverse; landowner remarks, etc.

ORIGINAL CORNER OBLITERATED; SET HARRISON MONUMENT 8" BELOW SURFACE OF GRAVEL ROAD BY DIRECT SINGLE PROPORTIONAL MEASUREMENT BETWEEN NORTHEAST AND NORTHWEST CORNERS OF SECTION 26. EDM USED IN MEASUREMENTS TO DETERMINE LOCATION OF CORNER.

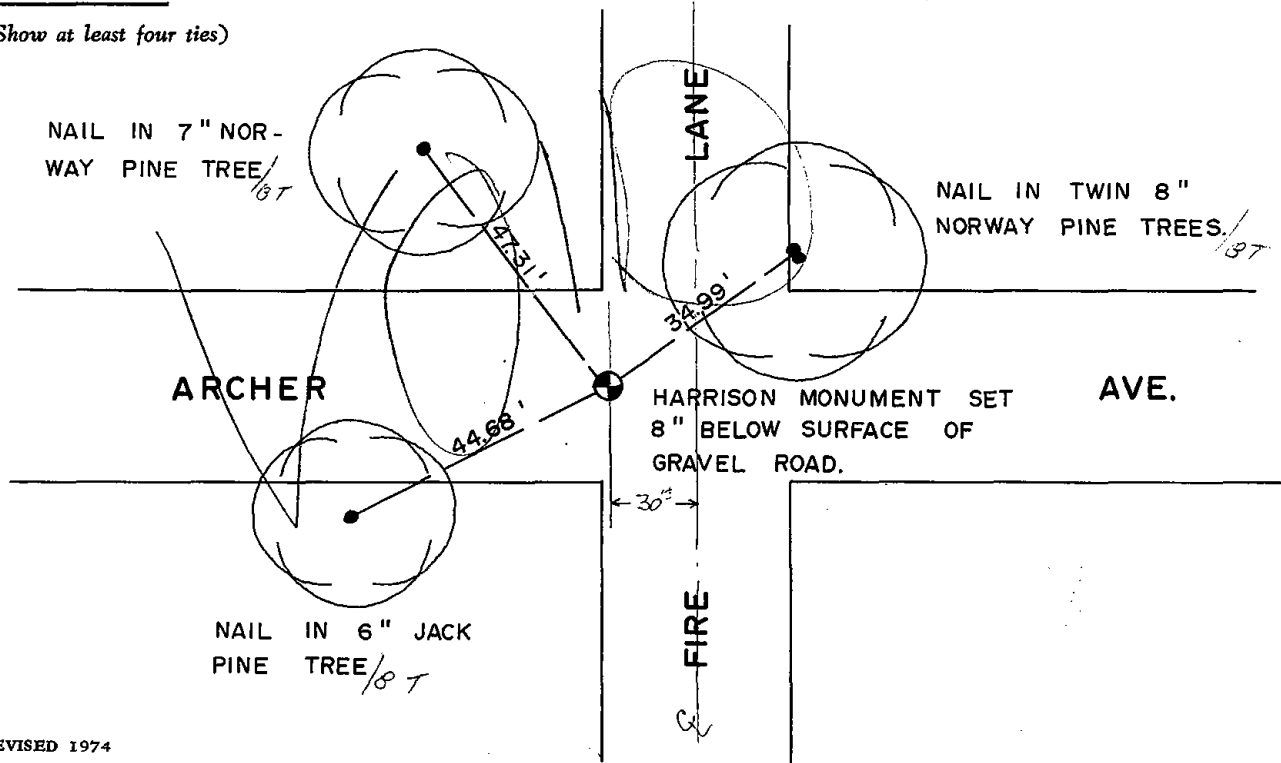


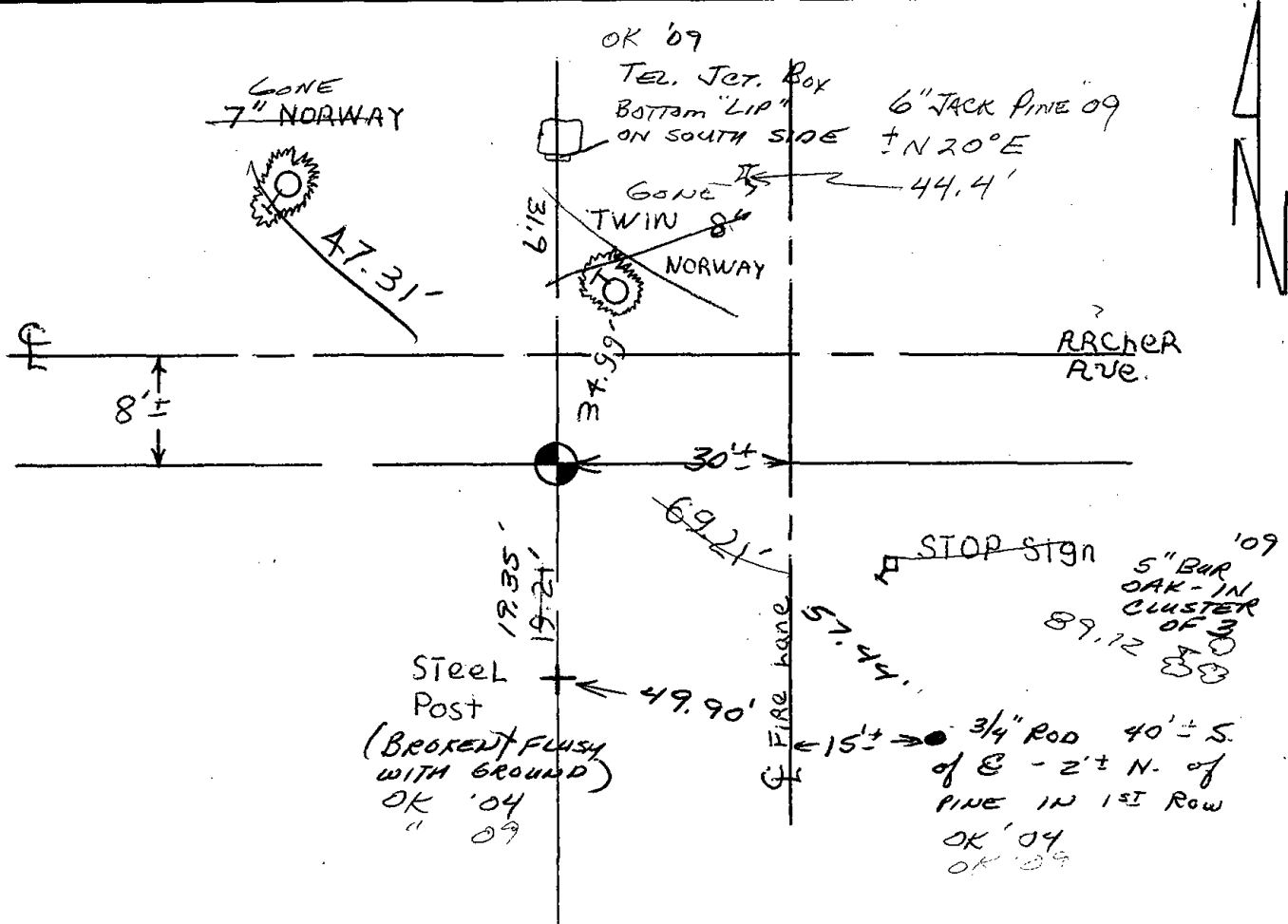
OK 4-27-79 JSK-RN  
See the reverse for the updated map 4-25-84

CERTIFIED CORRECT:  
  
 Registered Land Surveyor  
 DATE: JULY 23, 1974.

TIE SKETCH

(Show at least four ties)





Map updated 4-25-84 DK-SS

SET ROD/TIE 6-12-89 MK-SS  
OK 2-11-94 CR-SS  
OK 12-28-98-JG

6-23-04 SET / NEW TIE FROM REMAINING 2 TIES -  
ORIG. TIE SHEET SHOWS 8" BELOW GRAVEL, DID NOT DIG OUT - SUGGEST  
VERIFY WITH ADJ. SURVEY INFO  
05-02-09 2 NEW TIES FROM 3 REMAINING TIES SJS