

PUBLIC LAND SURVEY MONUMENT RECORD

TYPE OF MONUMENT: HARRISON (BROKEN-TOP)
 ADAMS COUNTY COORDINATES, NAD 83 (2007)

N. 298110.418

E. 522830.493

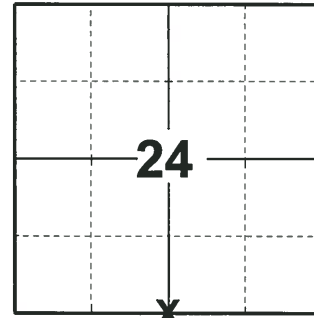
ELEVATION- - - - DATUM - - - -

FIELD WORK DATE: 06/06/2018

BASIS FOR MONUMENT LOCATION

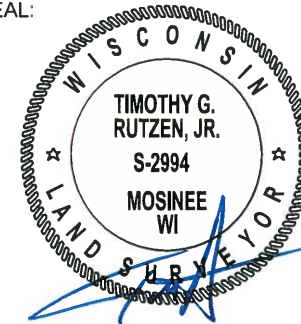
2015- PLS 2452 FOUND A HARRISON MONUMENT WITH TOP BROKEN OFF 1"± BELOW GRADE OF A SAND/DIRT ROAD PER TIE SHEET BY ANTHONY B. KIEDROWSKI, DATED, 6-17-81. FOUND 3 TIES AS REFERENCED ON SAID TIE SHEET. THE 1"X 24" PIPE WITH WITNESS CAP 50' NORTH WAS FOUND LEANING NORTH AND THE 1" X24" PIPE WITH WITNESS CAP 46' SOUTHWEST WAS FOUND ON ITS SIDE. ACCEPTED THE HARRISON MONUMENT, RE SET THE SOUTHWEST PIPE WITH WITNESS CAP, RE SHOT THE NORTH PIPE WITH WITNESS CAP AND PLACED 2 TIES.

2018- PLS 2994 FOUND A HARRISON MONUMENT WITH A BROKEN-TOP 24" BELOW THE ROAD SURFACE AND 4 TIES. THE MONUMENT AGREES WITH THE EXISTING TIES. ACCEPTED THE HARRISON MONUMENT WITH A BROKEN-TOP AS THE CORNER LOCATION AND RE-MEASURED TO THE EXISTING TIES.



LOCATION
 (INDICATE CORNER BY "X")

SEAL:

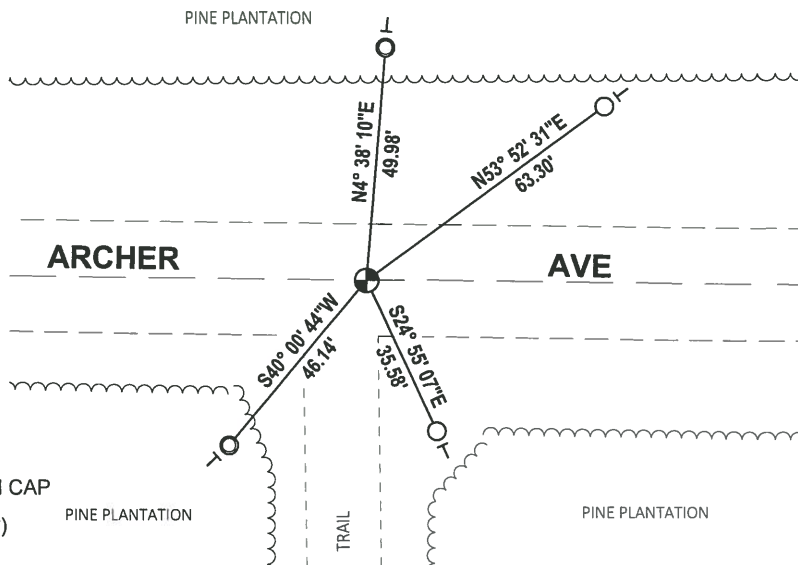


DATA SHOWN HERE ON THIS TIE SHEET IS CORRECT AND COMPLETE TO THE BEST OF MY KNOWLEDGE AND BELIEF.

PROFESSIONAL LAND SURVEYOR

DATE 7-18-18

- TIE SKETCH -

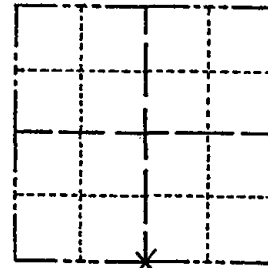


- FOUND 3/4" IRON ROD
- ⊙ FOUND 1-1/4" O.D. IRON PIPE WITH ALUMINUM CAP
- ⊕ FOUND HARRISON MONUMENT (BROKEN-TOP)
- VINYL "T" POST

Government Land Corner Certificate

ADAMS County
 TYPE OF MONUMENT: HARRISON
 STATE PLANE COORDINATES: N _____
 E _____
 ELEVATION — M.S.L. DATUM: _____
 THETA ANGLE: _____
 FIELD BOOK: 102 PAGE 112
 DRAWN BY: L.C.

CORNER NO. 92
 SECTION 24
 TOWN 20
 RANGE 5



LOCATION
(Indicated by 'X')

BASIS FOR MONUMENT LOCATION

Show info such as: History of corner, with reference to Vol. and pg., dates, surveyor; exact description of monument replaced; if location computed, by taped or EDM traverse; landowner remarks, etc. (Use reverse side if necessary)

Scraped area with endloader, found nothing.
Corner is set on line equidistant between section corners.

New ties shown on map on reverse side of this sheet

SEAL:



DATA SHOWN HERE ON
CERTIFIED CORRECT:

Anthony B. Kiedrowski
Registered Land Surveyor

DATE: 6/17/81

TIE SKETCH

Show at least four ties, also fence lines, roads, topo, size and type of witness trees' and if off road - best way to arrive at corner.

