

27  
SECTION

20  
TOWN

05  
RANGE

# ADAMS COUNTY

COUNTY CORNER NO: 98

ROMPORTOL ID: 42005272000

## PUBLIC LAND SURVEY MONUMENT RECORD

TYPE OF MONUMENT: HARRISON  
ADAMS COUNTY COORDINATES, NAD 83 (2007)

N. 295476.502

E. 514962.092

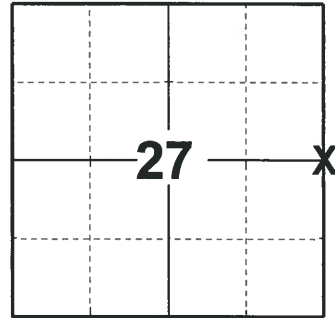
ELEVATION- - - - DATUM - - - -

FIELD WORK DATE: 06/07/2018

### BASIS FOR MONUMENT LOCATION

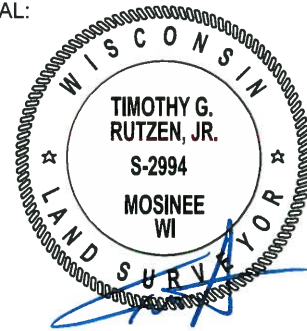
1981 - PLS 878 NO RECORD OF ANY RESURVEYS OR ANY EVIDENCE OF ANY PREVIOUS MONUMENTATION. CALCULATED THE CORNER ON LINE AND EQUIDISTANT BETWEEN SECTION CORNERS. SET HARRISON AND TIED OUT.

2018 - PLS 2994 FOUND A HARRISON MONUMENT FLUSH WITH THE GROUND SURFACE. FOUND NO EVIDENCE OF ANY OF THE WITNESSES. THE HARRISON MONUMENT FALLS EQUIDISTANT BETWEEN THE SECTION CORNERS TO THE NORTH AND SOUTH. HOWEVER THE THE HARRISON MONUMENT FALLS 15± WEST OF BEING ON A STRAIGHT LINE BETWEEN THE SECTION CORNERS. ACCEPTED THE HARRISON MONUMENT AS THE BEST EVIDENCE OF THE CORNER LOCATION, USING THE DISTANCE TO THE CENTERLINE OF 16TH AVE. SET 4 NEW TIES AND MEASURED TO THE TIES.



LOCATION  
(INDICATE CORNER BY "X")

SEAL:



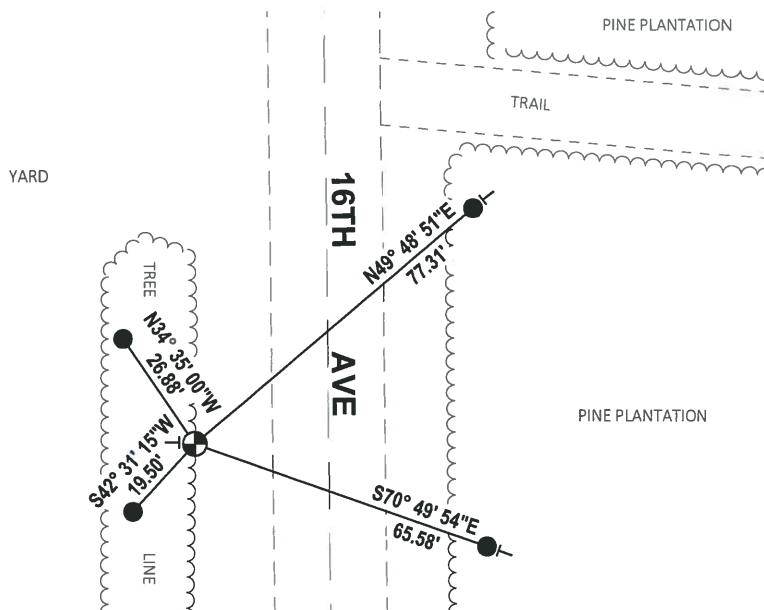
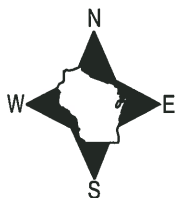
DATA SHOWN HERE ON THIS TIE SHEET IS CORRECT AND COMPLETE TO THE BEST OF MY KNOWLEDGE AND BELIEF.

PROFESSIONAL LAND SURVEYOR

DATE 7-18-18

### - TIE SKETCH

NOTE: THE CORNER FALLS 28± WEST OF THE CENTERLINE OF 16TH AVE AND 130± SOUTH OF THE CENTERLINE OF NIGHT HAWK TR.



- SET 3/4" x 18" IRON REBAR, 1.50#/FT
- ⊕ FOUND HARRISON MONUMENT
- VINYL "T" POST

# Government Land Corner Certificate

Adams County

TYPE OF MONUMENT: HARRISON

STATE PLANE COORDINATES: N \_\_\_\_\_  
E \_\_\_\_\_

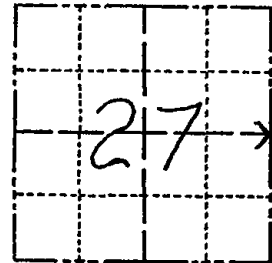
ELEVATION — M.S.L. DATUM: \_\_\_\_\_

THETA ANGLE: \_\_\_\_\_

FIELD BOOK: 69 PAGE 128

DRAWN BY: N.J.

CORNER NO. 98  
SECTION 27  
TOWN 20  
RANGE 5



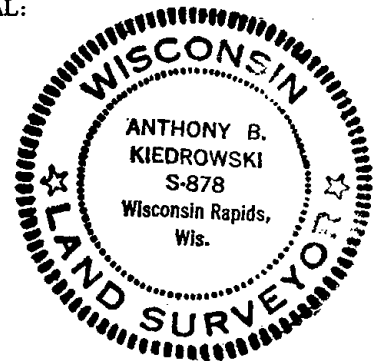
## BASIS FOR MONUMENT LOCATION

Show info such as: History of corner, with reference to Vol. and pg., dates, surveyor; exact description of monument replaced; if location computed, by taped or EDM traverse; landowner remarks, etc. (Use reverse side if necessary)

No record of any resurveys, no evidence of any previous monumentation. This corner is set on a straight line equidistant between section corners.

- 2 new 4-25-84 SS-DK
- 2 NEW TIES 6-12-89 MK-SS
- OK 2-11-94 CR-SS
- OK 12-28-98-JG
- 2-GONE 2-NEW 1-29-04, JG-DA
- OK 1-13-09 '55

SEAL:



DATA SHOWN HERE ON CERTIFIED CORRECT:

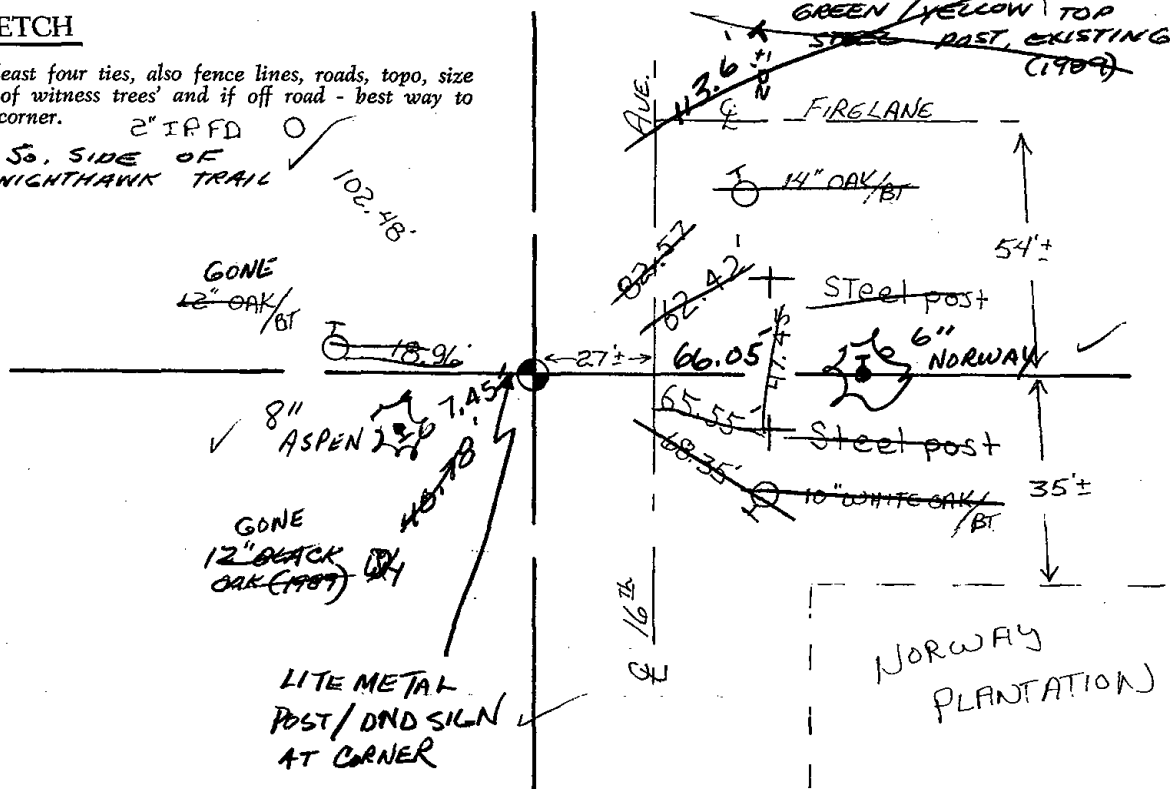
*Anthony B. Kiedrowski*  
Registered Land Surveyor

DATE: 7/15/81

## TIE SKETCH

Show at least four ties, also fence lines, roads, topo, size and type of witness trees and if off road - best way to arrive at corner.

2" IPFD  
So. SIDE OF  
NIGHTHAWK TRAIL



NORWAY  
PLANTATION

