

PUBLIC LAND SURVEY MONUMENT RECORD

TYPE OF MONUMENT: SET 3/4" x 18" IRON REBAR
 ADAMS COUNTY COORDINATES, NAD 83 (2007)

N. 295505.013

E. 520174.627

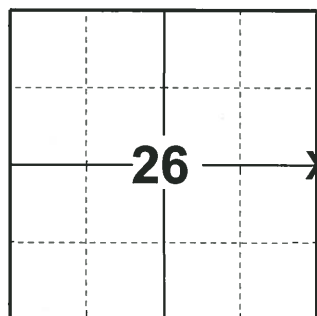
ELEVATION- _____ DATUM _____

FIELD WORK DATE: 06/13/2018

BASIS FOR MONUMENT LOCATION

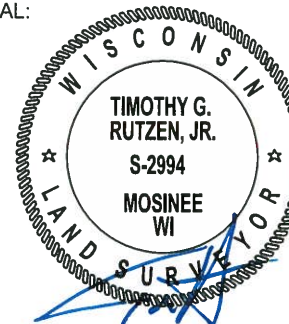
2015- PLS 2452 FOUND HARRISON MONUMENT 3"± BELOW GRADE OF A SAND/DIRT ROAD PER TIE SHEET BY R.W. NORDINE, DATED 7-23-74. FOUND 3/4" ROD SOUTHEASTERLY OF SAID HARRISON MONUMENT. ACCEPTED THE HARRISON MONUMENT AND PLACED 3 TIES.

2018- PLS 2994 FOUND NO EVIDENCE OF CORNER IN ROUGH AREA DUE TO GRADING AND FILL FOR GOLF COURSE. FOUND 1 EXISTING TIE IN GOOD CONDITION. CALCULATED POSITION WITH DISTANCE-DISTANCE INTERSECTION FROM THE GOOD TIE AND NORTHEAST CORNER OF SECTION 26. THIS POSITION FIT WELL WITH THE RECORDED DISTANCE TO THE SOUTHEAST CORNER OF SECTION 26. ACCEPTED THIS CALCULATED POSITION FOR THE CORNER AND SET A SET 3/4" x 18" IRON REBAR, 1.50#/FT FOR THE CORNER AND SET 3 NEW TIES.



LOCATION
 (INDICATE CORNER BY "X")

SEAL:



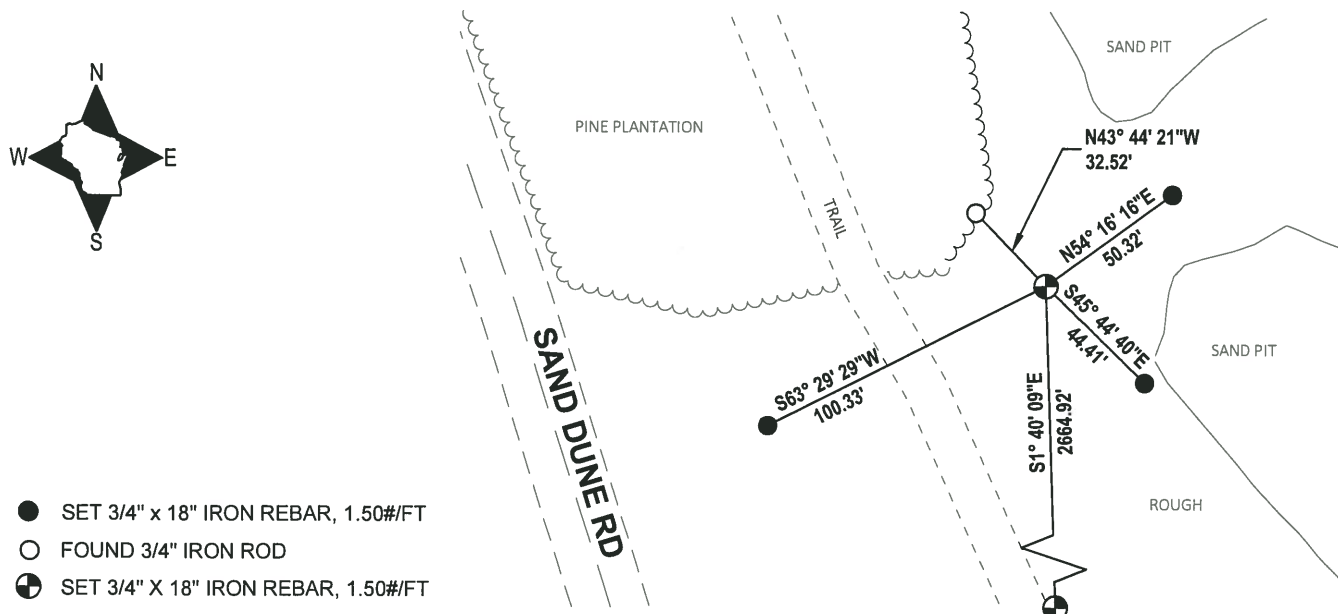
DATA SHOWN HERE ON THIS TIE SHEET IS CORRECT AND COMPLETE TO THE BEST OF MY KNOWLEDGE AND BELIEF.

PROFESSIONAL LAND SURVEYOR

DATE 7-18-18

- TIE SKETCH

NOTE: THE CORNER FALLS 43'± NORTHEAST OF THE TRAIL.

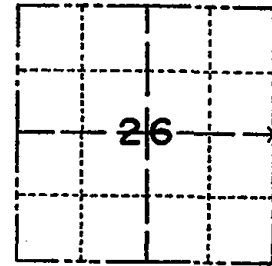


ADAMS COUNTY

Survey Monument Record

TYPE OF MONUMENT: HARRISON
 STATE PLANE COORDINATES: N. _____
 E. _____
 ELEVATION — M.S.L. DATUM: _____
 THETA ANGLE: _____
 FIELD BOOK: _____ PAGE _____

CORNER NO. 414 (99)
 SECTION 26
 TOWN 20 N.
 RANGE 5 E.



LOCATION
(Indicated by 'X')

BASIS FOR MONUMENT LOCATION

(Use reverse side if necessary)

Show info such as: History of corner, with reference to Vol. and pg, dates, surveyor; exact description of monument replaced; if location computed, by taped or EDM traverse; landowner remarks, etc.

SEAL:



RECOVERED 1" IRON PIPE SET FLUSH WITH CENTERLINE INTERSECTION OF TOWN ROADS. SET HARRISON MONUMENT IN PLACE OF 1" PIPE.

- 2 new 4-25-84 SS-DK
- 2 NEW TIES 6-12-89 MK-SS
- OK 3-2-94 - JG
- OK 12-28-98 - JG
- 1-GONE 4-LEFT, 1-19-04 - JG
- 1-13-06 20' SS

CERTIFIED CORRECT:

R. W. Nordin

Registered Land Surveyor

DATE: 7-23-74.

TIE SKETCH

(Show at least four ties)

