

PUBLIC LAND SURVEY MONUMENT RECORD

TYPE OF MONUMENT: HARRISON
 ADAMS COUNTY COORDINATES, NAD 83 (2007)

N. 292798.269

E. 509708.981

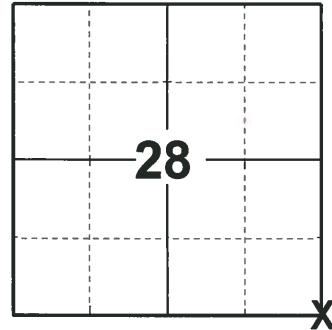
ELEVATION- - - - DATUM - - - -

FIELD WORK DATE: 06/11/2018

BASIS FOR MONUMENT LOCATION

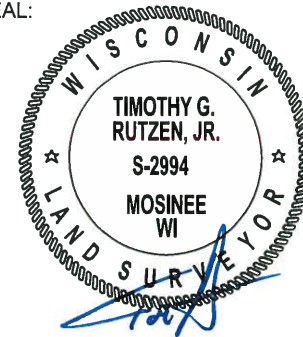
1984 - PLS 742 FOUND A HARRISON MONUMENT IN PLACE AT THE SOUTHWEST CORNER OF AMUNDSON SUBDIVISION AND TIED OUT CORNER.

2018 - PLS 2994 FOUND A HARRISON MONUMENT 4" BELOW THE GROUND SURFACE, 2 TIES, 1 PROPERTY IRON AND 1 WITNESS. THE MONUMENT AGREES WITH THE EXISTING TIES AND WITNESS. ACCEPTED THE HARRISON MONUMENT AS THE CORNER LOCATION. SET 2 NEW TIES AND MEASURED TO THE TIES, PROPERTY IRON AND WITNESS.



LOCATION
 (INDICATE CORNER BY "X")

SEAL:



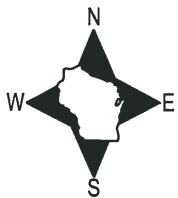
DATA SHOWN HERE ON THIS TIE SHEET IS CORRECT AND COMPLETE TO THE BEST OF MY KNOWLEDGE AND BELIEF.

PROFESSIONAL LAND SURVEYOR

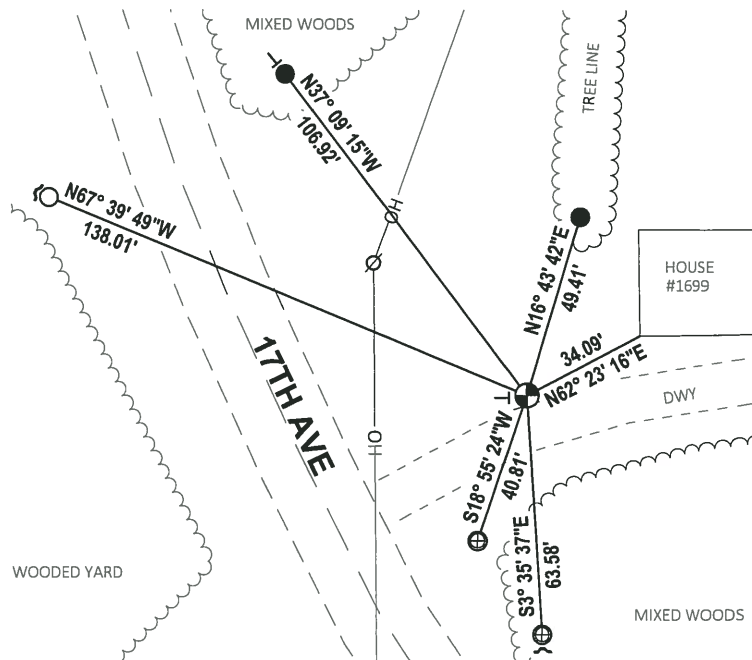
DATE 7-18-18

- TIE SKETCH

NOTE: THE CORNER FALLS 61½ EAST OF THE CENTERLINE OF 17TH AVE.



- SET 3/4" x 18" IRON REBAR, 1.50#/FT
- FOUND 3/4" IRON ROD
- ⊕ FOUND 1" IRON ROD
- ⊙ FOUND HARRISON MONUMENT
- ↗ STEEL FENCE POST
- ↖ VINYL "T" POST



Filed

ADAMS COUNTY

CORNER NO. 107
SECTION 27
TOWN 20
RANGE 5

Survey Monument Record

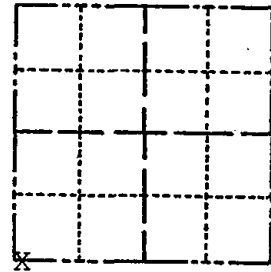
TYPE OF MONUMENT: Std. harrison

STATE PLANE COORDINATES: N _____
E _____

ELEVATION — M.S.L. DATUM: _____

THETA ANGLE: _____

FIELD BOOK: _____ PAGE _____



LOCATION
(Indicated by 'X')

SEAL:



BASIS FOR MONUMENT LOCATION

(Use reverse side if necessary)

Show info such as: History of corner, with reference to Vol. and pg, dates, surveyor; exact description of monument replaced; if location computed, by taped or EDM traverse; landowner remarks, etc.

Found monument in place, apparently at the southwest corner of Amundson Subdivision.

Ties only.

CERTIFIED CORRECT:

Kenneth G. Carlson
Registered Land Surveyor

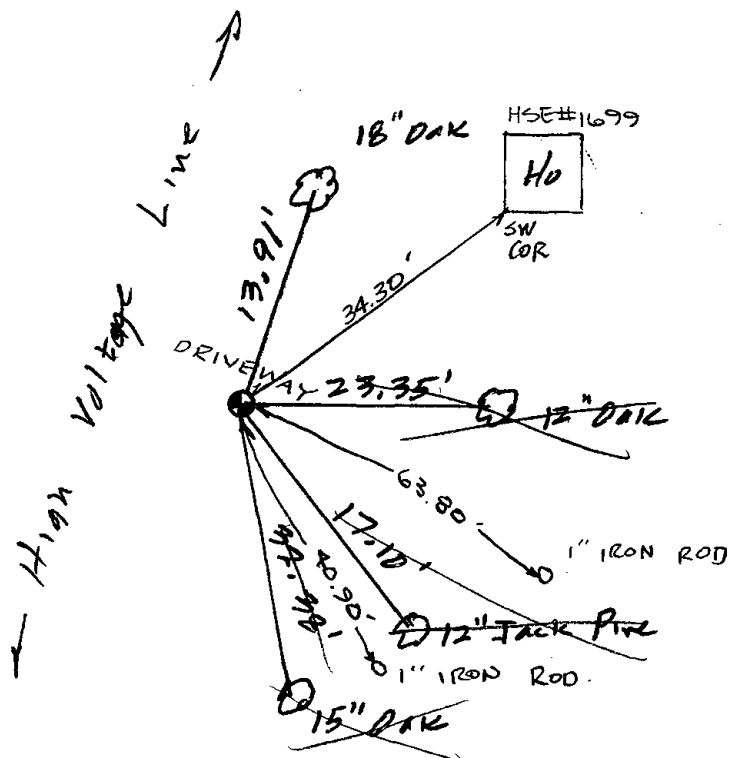
DATE: Apr 30, 1984

TIE SKETCH

(Show at least four ties)

POLED 3 NEW TIES
2-11-1994 CR-55

OK 12-29-98-JG
4 TIES REMAIN / POST-SIGN
@ COR. 2-13-09 SS



spikes with
cap covers
on trees

