

PUBLIC LAND SURVEY MONUMENT RECORD

TYPE OF MONUMENT: HARRISON (BROKEN-TOP)
 ADAMS COUNTY COORDINATES, NAD 83 (2007)

N. 292820.789

E. 512357.390

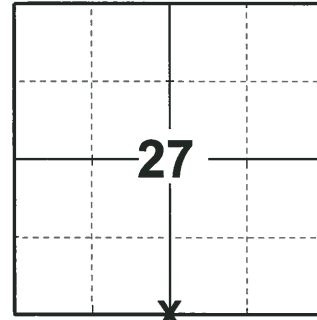
ELEVATION- - - - DATUM - - - -

FIELD WORK DATE: 06/11/2018

BASIS FOR MONUMENT LOCATION

1974- PLS 878 CORNER CALCULATED BY RETRACEMENT OF SURVEYS TO THE NORTHWEST AND SOUTHWEST (AMUNDSON SURVEY, MORRIS SURVEY). ALSO FOUND 1" IRON PIPE, BUT DID NOT ACCEPT IT. SET HARRISON AT CALCULATED POSITION AND TIED OUT.

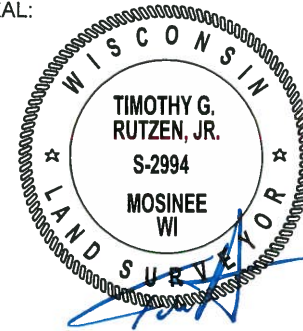
2018- PLS 2994 FOUND A HARRISON MONUMENT WITH A BROKEN-TOP 6" BELOW THE ROAD SURFACE AND 3 TIES. THE MONUMENT AGREES WITH THE EXISTING TIES. ACCEPTED THE HARRISON MONUMENT WITH A BROKEN-TOP AS THE CORNER LOCATION. SET 1 NEW TIE AND MEASURED TO THE TIES.



LOCATION

(INDICATE CORNER BY "X")

SEAL:



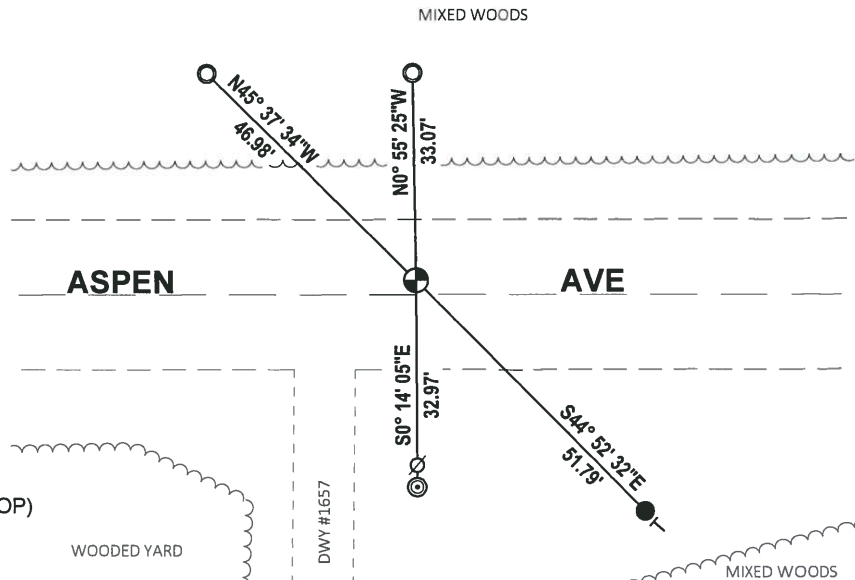
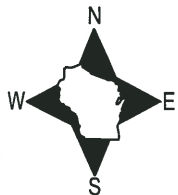
DATA SHOWN HERE ON THIS TIE SHEET IS CORRECT AND COMPLETE TO THE BEST OF MY KNOWLEDGE AND BELIEF.

PROFESSIONAL LAND SURVEYOR

DATE 7-18-18

- TIE SKETCH -

NOTE: CORNER FALLS 5± NORTH OF ASPEN AVE CENTERLINE.



- SET 3/4" x 18" IRON REBAR, 1.50#/FT
- ⊙ FOUND 2-3/8" O.D. IRON PIPE
- FOUND 1-1/4" O.D. IRON PIPE
- ⊕ FOUND HARRISON MONUMENT (BORKEN-TOP)
- ⊘ WITNESS POWER POLE
- VINYL "T" POST

ADAMS COUNTY

Survey Monument Record

TYPE OF MONUMENT: Harrison Standard

STATE PLANE COORDINATES: N _____

E _____

ELEVATION — M.S.L. DATUM: _____

THETA ANGLE: _____

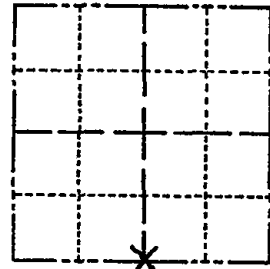
FIELD BOOK: _____ PAGE _____

CORNER NO. 448

SECTION 27

TOWN 20

RANGE 5



LOCATION
(Indicated by 'X')

SEAL:



BASIS FOR MONUMENT LOCATION

(Use reverse side if necessary)

Show info such as: History of corner, with reference to Vol. and pg, dates, surveyor; exact description of monument replaced; if location computed, by taped or EDM traverse; landowner remarks, etc.

Point established by retracement of survey Northwest and Southwest of here (Amundson survey, Morris survey). Also found 1" iron pipe shown on sketch but did not accept it.

- OK 4-27-79 JSK-RN
- OK 4-24-84 SS-DK
- OK 1-9-89 GR-KZ
- OK 2-11-1994 CR,SS
- OK 12-29-98-JG
- OK, 1-29-04, JG-DA
- OK 1-13-09 SS

CERTIFIED CORRECT:

Anthony B. Kiedrowski
Registered Land Surveyor

DATE: July 30, 1974

TIE SKETCH

All ties to nail and disc.

(Show at least four ties)

