

PUBLIC LAND SURVEY MONUMENT RECORD

TYPE OF MONUMENT: HARRISON (BROKEN-TOP)
 ADAMS COUNTY COORDINATES, NAD 83 (2007)

N. 292841.220

E. 520252.254

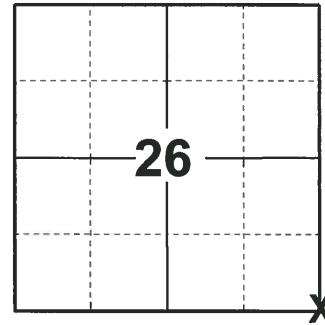
ELEVATION- _____ DATUM _____

FIELD WORK DATE: 06/13/2018

BASIS FOR MONUMENT LOCATION

2015- PLS 2452 FOUND HARRISON MONUMENT WITH THE TOP 16" BROKEN OFF 3'± BELOW GRADE OF A SAND/DIRT ROAD PER TIE SHEET BY R.W. NORDINE, DATED, 7-25-74. ACCEPTED THE HARRISON MONUMENT AND PLACED 4 TIES.

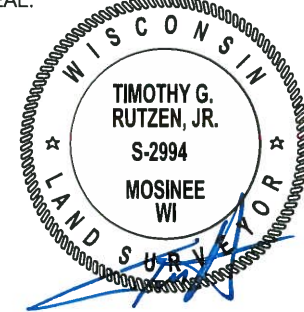
2018- PLS 2994 FOUND A HARRISON MONUMENT WITH A BROKEN-TOP 40" BELOW THE GROUND SURFACE AND 4 TIES. THE MONUMENT AGREES WITH 3 OF THE TIES, THE NE TIE WAS LEANING. ACCEPTED THE HARRISON MONUMENT WITH A BROKEN-TOP AS THE CORNER LOCATION. RE-MEASURED TO THE TIES.



LOCATION

(INDICATE CORNER BY "X")

SEAL:



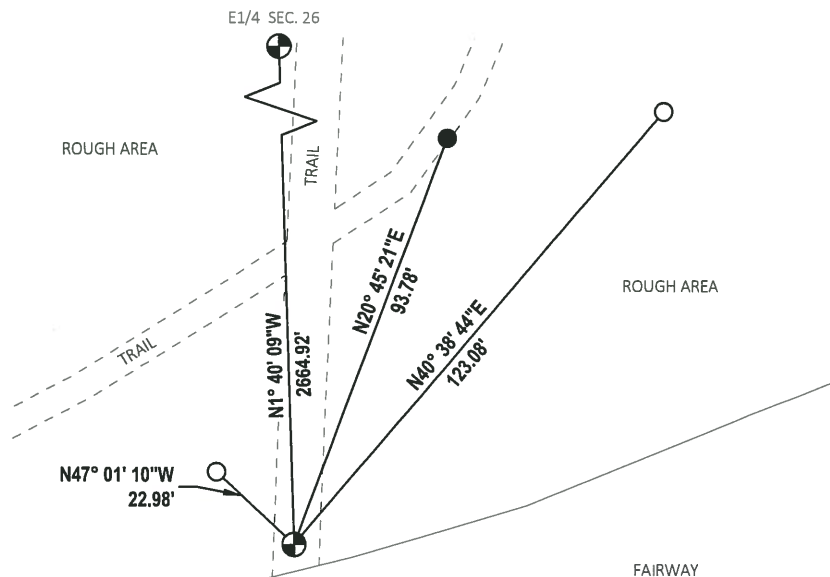
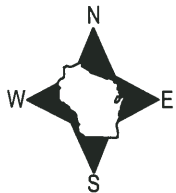
DATA SHOWN HERE ON THIS TIE SHEET IS CORRECT AND COMPLETE TO THE BEST OF MY KNOWLEDGE AND BELIEF.

PROFESSIONAL LAND SURVEYOR

DATE 7-18-18

TIE SKETCH

NOTE: THE CORNER FALLS IN A GOLF COURSE, APPROXIMATELY 6'± NORTH OF THE FAIRWAY.

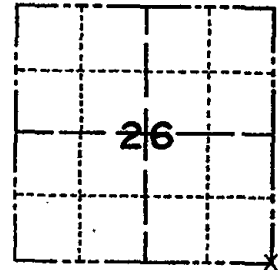


- RE-SET 3/4" IRON ROD
- FOUND 3/4" IRON ROD
- ⊕ FOUND HARRISON MONUMENT (BROKEN-TOP)

ADAMS COUNTY
Survey Monument Record

TYPE OF MONUMENT: HARRISON
 STATE PLANE COORDINATES: N _____
 E _____
 ELEVATION — M.S.L. DATUM: _____
 THETA ANGLE: _____
 FIELD BOOK: _____ PAGE _____

CORNER NO. 415
 SECTION 26
 TOWN 20 N.
 RANGE 5 E.



LOCATION
 (Indicated by 'X')

BASIS FOR MONUMENT LOCATION

(Use reverse side if necessary)

Show info such as: History of corner, with reference to Vol. and pg. dates, surveyor; exact description of monument replaced; if location computed, by taped or EDM traverse; landowner remarks, etc.

SEAL:



SET HARRISON MONUMENT FROM TIES TO 1" IRON PIPE RECOVERED BY AERO-METRIC ENGINEERING, SHEBOYGAN, WI. IN 1973.

2 new ties set 4-25-84 SS-DK

OK 3-2-94 - JG NOTHING AVAILABLE FOR TIES

3-NEW TIES, Mon. OK 12-28-98 - JG

OK, 1-19-04 - JG

4 TIES RECOVERED 1-13-09 SS

CERTIFIED CORRECT:

R. W. Nordin

Registered Land Surveyor

DATE: 7-23-74.

TIE SKETCH

(Show at least four ties)

