

## PUBLIC LAND SURVEY MONUMENT RECORD

TYPE OF MONUMENT: HARRISON (BROKEN-TOP)  
 ADAMS COUNTY COORDINATES, NAD 83 (2007)

N. 290196.973

E. 520255.751

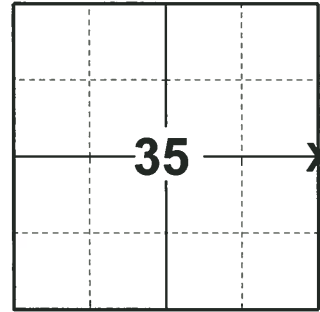
ELEVATION-          DATUM         

FIELD WORK DATE: 06/11/2018

### BASIS FOR MONUMENT LOCATION

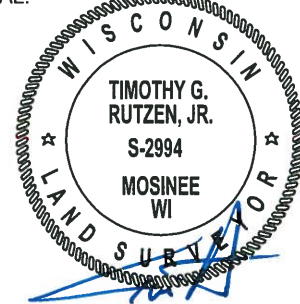
2015 - PLS 2452 FOUND A HARRISON MONUMENT WITH THE TOP BROKEN OFF 6"± BELOW GRADE OF SAND/DIRT ROAD PER TIE SHEET BY ANTHONY B. KIEDROWSKI, DATED, 6-22-81. ALSO FOUND A 1/2" IRON ROD EASTERLY OF THE HARRISON MONUMENT. ACCEPTED THE HARRISON MONUMENT AS THE CORNER LOCATION AND PLACED 4 NEW TIES. DATE OF THE FIELD SURVEY & MONUMENT RECOVERY WAS SEPTEMBER 03, 2015. ELEVATIONS PROVIDED ON SECTION CORNERS ARE BASED UPON THE NAVD88 DATUM.

2018 - PLS 2994 FOUND A HARRISON MONUMENT WITH A BROKEN-TOP 4" BELOW THE SURFACE AND 4 TIES. THE MONUMENT AGREES WITH THE EXISTING TIES. ACCEPTED THE HARRISON MONUMENT WITH A BROKEN-TOP AS THE CORNER LOCATION. RE-MEASURED TO THE EXISTING TIES.



**LOCATION**  
(INDICATE CORNER BY "X")

SEAL:



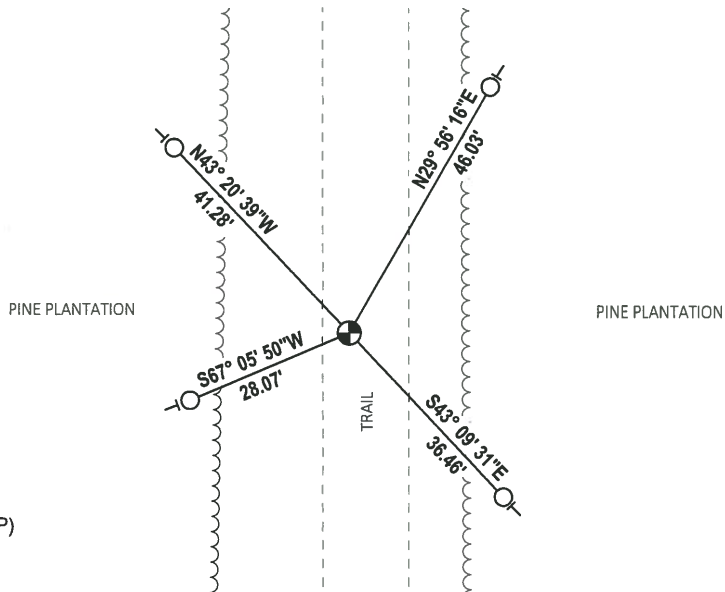
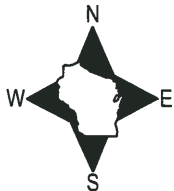
DATA SHOWN HERE ON THIS TIE SHEET IS CORRECT AND COMPLETE TO THE BEST OF MY KNOWLEDGE AND BELIEF.

PROFESSIONAL LAND SURVEYOR

DATE 7-18-18

### TIE SKETCH

NOTE: THE CORNER FALLS 3'± WEST OF THE CENTERLINE OF THE TRAIL AND 380'± NORTH OF A GATE.

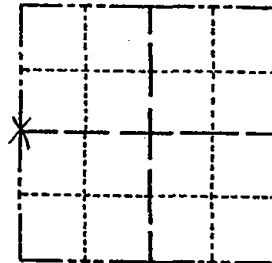


- FOUND 3/4" IRON ROD
- ⊕ FOUND HARRISON MONUMENT (BROKEN-TOP)
- VINYL "T" POST

# Government Land Corner Certificate

ADAMS County  
 TYPE OF MONUMENT: HARRISON  
 STATE PLANE COORDINATES: N \_\_\_\_\_  
 E \_\_\_\_\_  
 ELEVATION — M.S.L. DATUM: \_\_\_\_\_  
 THETA ANGLE: \_\_\_\_\_  
 FIELD BOOK: 102 PAGE 111  
 DRAWN BY: L.C.

CORNER NO. 119  
 SECTION 36  
 TOWN 20  
 RANGE 5



LOCATION  
(Indicated by 'X')

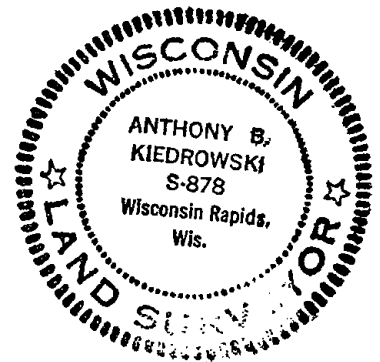
## BASIS FOR MONUMENT LOCATION

Show info such as: History of corner, with reference to Vol. and pg., dates, surveyor; exact description of monument replaced; if location computed, by taped or EDM traverse; landowner remarks, etc. (Use reverse side if necessary)

Scraped area with endloader. Found bottom 15" of 3" dia rotted wood post. Replaced it with Harrison. Location verified by EDM traverse. Post called for by MC. Smith, in 1914. The location of the post found puts a considerable bend in the section line at this point. Smith's notes indicate a bend here also.

- 1 new 4-25-84 SS-DK
- OK 1-9-89 GR-KZ
- 1- GONE 3-2-94 - JG
- OK 12-28-98 - JG
- 2-NEW 1-19-04 - JG
- OK 2-18-09 SS

SEAL:



DATA SHOWN HERE ON  
CERTIFIED CORRECT:

*Anthony B. Kiedrowski*  
Registered Land Surveyor

DATE: 6/22/81

## TIE SKETCH

Show at least four ties, also fence lines, roads, topo, size and type of witness trees and if off road - best way to arrive at corner.

