

## PUBLIC LAND SURVEY MONUMENT RECORD

TYPE OF MONUMENT: HARRISON  
ADAMS COUNTY COORDINATES, NAD 83 (2007)

N. 287569.362

E. 525534.326

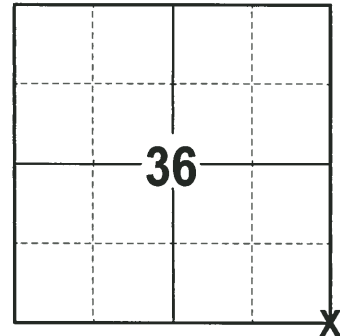
ELEVATION-      -      -      DATUM      -      -     

FIELD WORK DATE: 01/17/2018

### BASIS FOR MONUMENT LOCATION

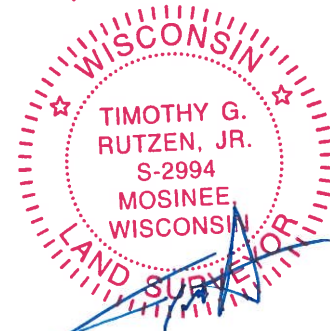
2015 - PLS 2452 FOUND A HARRISON MONUMENT 6"± BELOW THE GRADE OF THE ASPHALT ROAD PER TIE SHEET BY WAYNE BASLER, DATED, 7-31-75. ACCEPTED THE HARRISON MONUMENT AS THE CORNER AND PLACED 4 TIES. DATE OF FIELD SURVEY & MONUMENT RECOVERY WAS SEPTEMBER 02, 2015.

2018 - PLS 2994 FOUND A HARRISON MONUMENT 8" BELOW THE ROAD SURFACE AND 4 TIES. THE MONUMENT AGREES WITH 3 OF THE EXISTING TIES THE SE TIE SEEMS TO HAVE BEEN MOVED. ACCEPTED THE HARRISON MONUMENT AS THE CORNER LOCATION AND RE-MEASURED TO THE EXISTING TIES.



**LOCATION**  
(INDICATE CORNER BY "X")

SEAL:



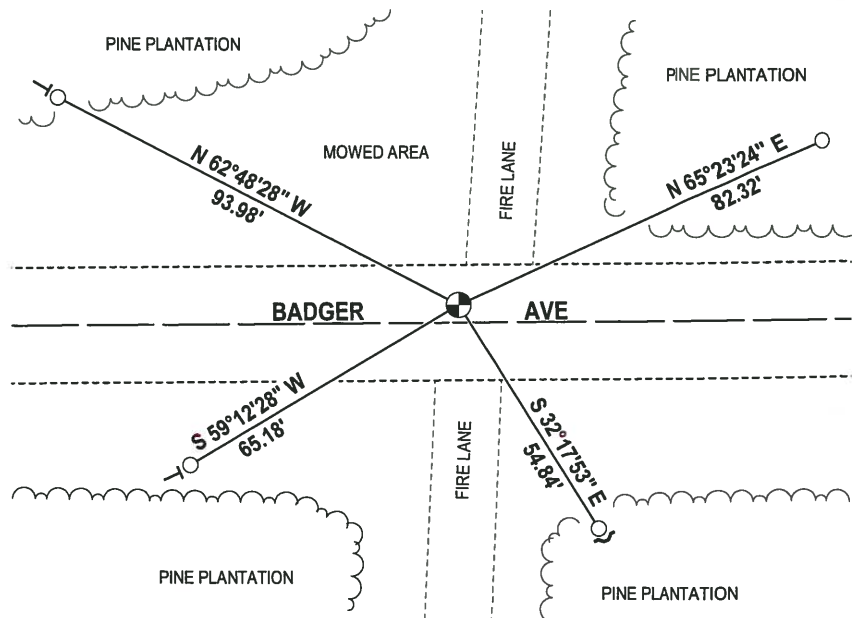
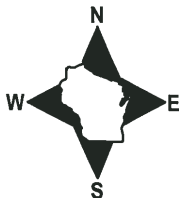
DATA SHOWN HERE ON THIS TIE SHEET IS CORRECT AND COMPLETE TO THE BEST OF MY KNOWLEDGE AND BELIEF.

PROFESSIONAL LAND SURVEYOR

DATE 3-1-18

### - TIE SKETCH -

NOTE: THE CORNER FALLS 4"± NORTH OF THE CENTERLINE OF BADGER AVE.



- 3/4" IRON ROD FOUND
- ⊕ HARRISON FOUND
- ↘ STEEL FENCE POST
- └ VINYL "T" POST

# U.S. PUBLIC LAND SURVEY MONUMENT RECORD

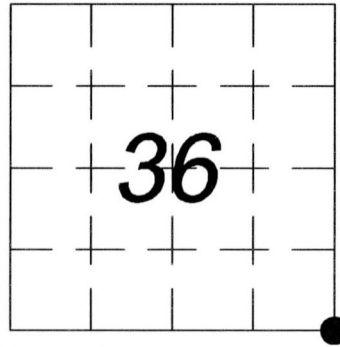
INSTRUCTIONS: This record shall show the location of the corner and shall include all of the following nine elements (a through i).

(a) Identify the corner by reference to the U.S. Public Land Survey System.

● = Corner monument restored.

36	31
01	06

SOUTHEAST CORNER OF SECTION 36,  
TOWNSHIP 20 NORTH, RANGE 05 EAST,  
TOWN OF ROME, ADAMS COUNTY, WISCONSIN



BEARINGS ARE REFERENCED TO  
THE WISCONSIN COUNTY  
COORDINATE SYSTEM, ADAMS  
COUNTY, WISCONSIN

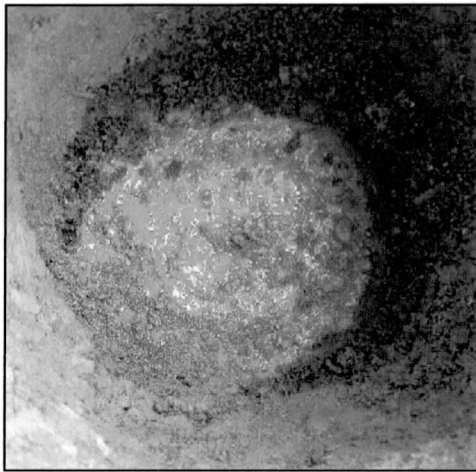
(b) Describe any record evidence, monument evidence, occupational evidence, testimonial evidence, or any other material evidence you considered, and whether the monument was found or placed.

I found a Harrison Monument 6"± below grade of asphalt road per tie sheet by Wayne Basler, dated, 7-31-75. I accepted the Harrison Monument (see picture), and placed four (4) ties all as referenced below. Date of field survey & monument recovery was September 02, 2015. Elevations provided on section corners are based upon the NAVD88 Datum.

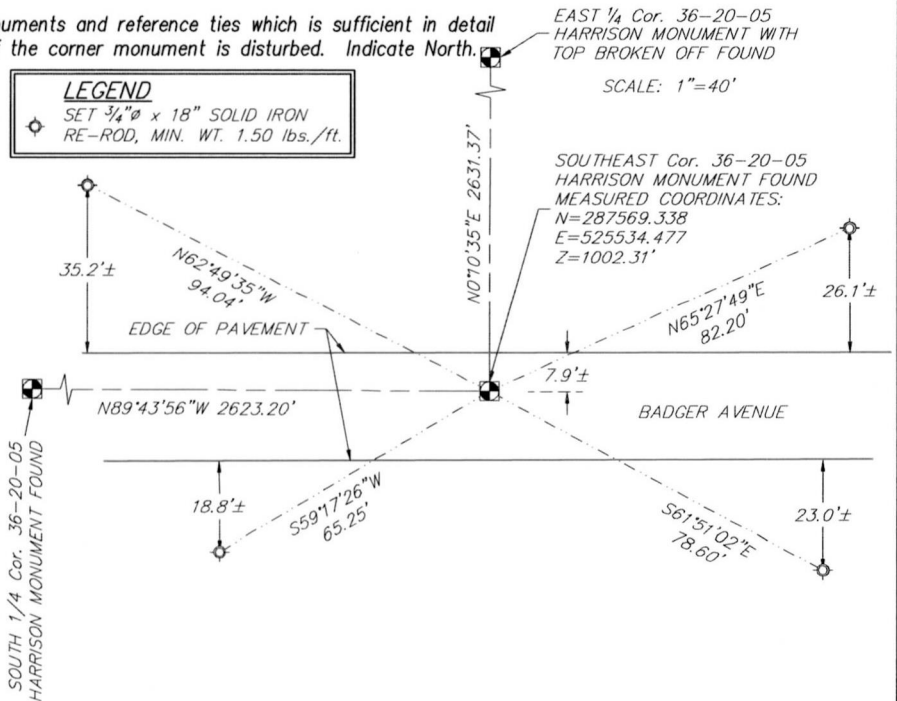
(c) In the plan view drawing below, provide reference ties to at least 4 witness monuments. (Witness monuments shall be made of concrete, natural stone, iron, or other equally durable material.) Describe witness monuments.

(d) Show a plan view drawing depicting the relevant monuments and reference ties which is sufficient in detail to enable accurate relocation of the corner monument if the corner monument is disturbed. Indicate North.

SECTION CORNER MONUMENT FOUND



**LEGEND**  
SET 3/4"Ø x 18" SOLID IRON  
RE-ROD, MIN. WT. 1.50 lbs./ft.



(e) Describe any material discrepancy between the location of the corner as restored or re-established and the location of that corner as previously restored or re-established by distance and direction. Show the discrepancy on the plan view drawing under (d), above. Show the distances between the corner as previously restored or re-established and (1) the corner as restored or re-established, and (2) to at least 2 of the 4 witness monuments shown on the drawing in (d), above.

No known discrepancy.

(f) Was the corner restored through acceptance of (1) an obliterated evidence location, or, (2) a found perpetuated location?

Found perpetuated location.

(g&h) Was the corner re-established through lost corner proportionate methods? If so, show the method, including the directions and distances to other public land survey corners used as evidence or used for proportioning in determining the corner location.

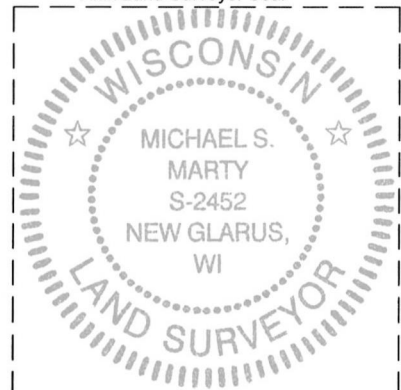
Found perpetuated location.

(i) I, Michael S. Marty, Professional Land Surveyor No. 2452, hereby certify that the corner location shown on this record was determined by me or under my direction and control and that this U.S. Public Land Survey Monument Record is correct and complete to the best of my knowledge and belief.

*Michael S. Marty*  
By: Vierbicher Associates, Inc.  
Michael S. Marty, P.L.S. No. 2452

9/22/2015  
Date

Affix Land Surveyor Seal



**vierbicher**  
planners | engineers | advisors



FN: 150044  
DATE: 09/22/2015  
Drafted By: MMAR  
Checked By: MZIE

REEDSBURG - MADISON - PRAIRIE DU CHIEN  
999 Fourier Drive, Suite 201 Madison, Wisconsin 53717  
Phone: (608) 826-0532 Fax: (608) 826-0530