

ADAMS COUNTY

CORNER NO. 445

Survey Monument Record

SECTION 1

TYPE OF MONUMENT: Harrison Standard

TOWN 20

STATE PLANE COORDINATES: N _____

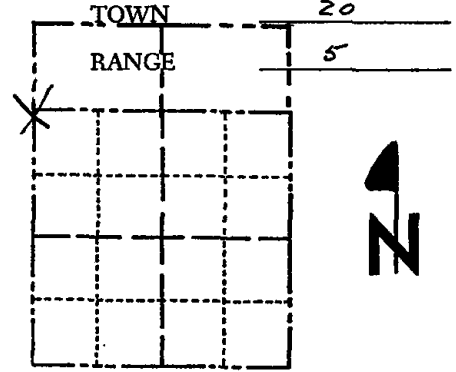
RANGE 5

E _____

ELEVATION — M.S.L. DATUM: _____

THETA ANGLE: _____

FIELD BOOK: _____ PAGE _____



LOCATION
(Indicated by 'X')

SEAL:

BASIS FOR MONUMENT LOCATION

(Use reverse side if necessary)

Show info such as: History of corner, with reference to Vol. and pg, dates, surveyor; exact description of monument replaced; if location computed, by taped or EDM traverse; landowner remarks, etc.

Monumented point set by Kiedrowski for the Tuttle survey. Section was traversed. Point fits quite well.



CERTIFIED CORRECT:

Anthony B. Kiedrowski
Registered Land Surveyor

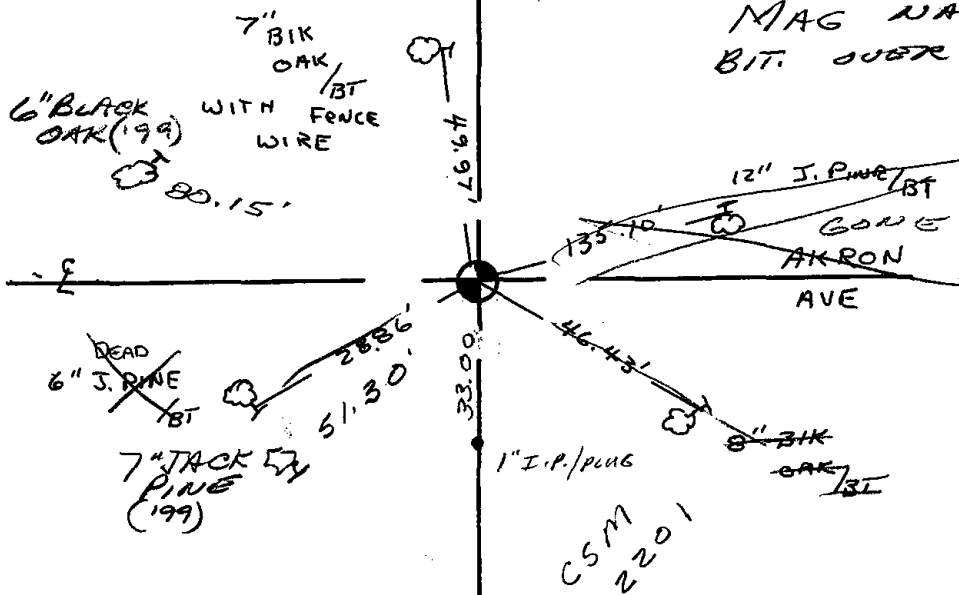
DATE: July 31, 1974

OK 2-11-94 CR-55
 OK 11-5-79 BS-55
 ADD 1" IP PER CSN 1-23-87 55
 2 NEW TIES 2-16-99 JG-55

TIE SKETCH OK 8-30-04 55
 " 3-5-09 55

(Show at least four ties)

All ties to nail and disc.



MAG NAIL IN
BIT. OVER MARK.