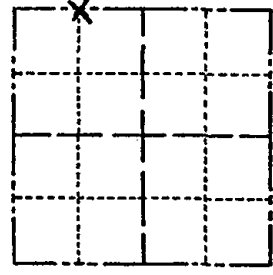


Government Land Corner Certificate

141

Adams County
 TYPE OF MONUMENT: 1" IP & PLUG
 STATE PLANE COORDINATES: N _____
 E _____
 ELEVATION — M.S.L. DATUM: _____
 THETA ANGLE: _____
 FIELD BOOK: 69 PAGE 127
 DRAWN BY: _____

CORNER NO. 40 x N 1/4 x NW 1/4
 SECTION 27
 TOWN 20
 RANGE 5



LOCATION
(Indicated by 'X')

BASIS FOR MONUMENT LOCATION

Show info such as: History of corner, with reference to Vol. and pg., dates, surveyor; exact description of monument replaced; if location computed, by taped or EDM traverse; landowner remarks, etc. (Use reverse side if necessary)

Set on an extension of the north line of the northeast quarter of section 27 and 33 feet west of an existing 4 x 4 concrete monument.

SEAL:



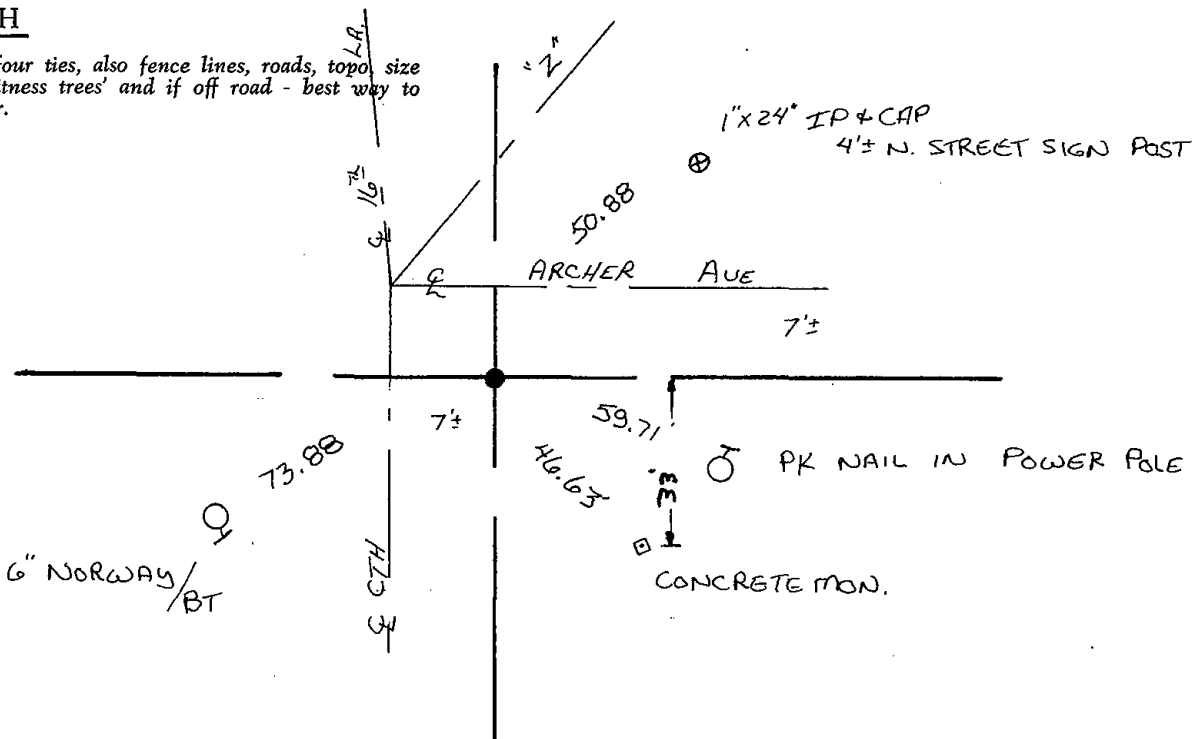
DATA SHOWN HERE ON
CERTIFIED CORRECT:

Anthony B. Kiedrowski
Registered Land Surveyor

DATE: 7/15/81

TIE SKETCH

Show at least four ties, also fence lines, roads, topo, size and type of witness trees and if off road - best way to arrive at corner.





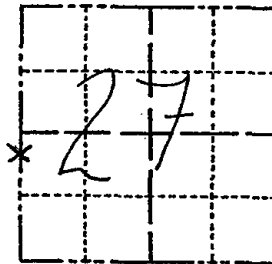
142

Government Land Corner Certificate

MEANDER
W 1/4 CORNER

ADAMS County
 TYPE OF MONUMENT: 2" I.P. w/ CAP
 STATE PLANE COORDINATES: N _____
 E _____
 ELEVATION — M.S.L. DATUM: _____
 THETA ANGLE: _____
 FIELD BOOK: _____ PAGE _____
 DRAWN BY: L. COOMBS

CORNER NO. 142
 SECTION 27
 TOWN 20
 RANGE 5



BASIS FOR MONUMENT LOCATION

Show info such as: History of corner, with reference to Vol. and pg., dates, surveyor; exact description of monument replaced; if location computed, by taped or EDM traverse; landowner remarks, etc. (Use reverse side if necessary)

This corner is set on a line which is indicated as being the section line according to the Amundson Subdivision as surveyed by RLS Edmund Novak, 1963.

SEAL:



DATA SHOWN HERE ON
CERTIFIED CORRECT:

Anthony B. Kiedrowski
Registered Land Surveyor

DATE: 7/15/81

TIE SKETCH

Show at least four ties, also fence lines, roads, topo, size and type of witness trees and if off road - best way to arrive at corner.

